

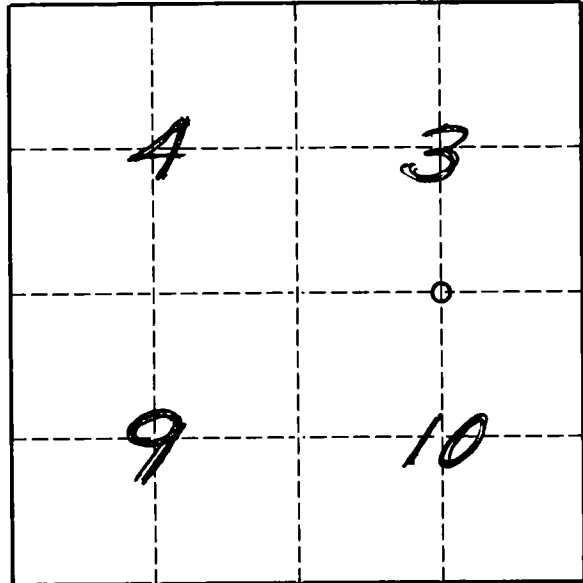
U. S. PUBLIC LAND SURVEY MONUMENT RECORD

INSTRUCTIONS:

This record shall show the location of the corner and shall include all of the following nine elements (a through i).

- (a) Identify the corner by reference to the U.S. public land survey system.
 O = Corner monument restored.

South Quarter corner of
 Section 3,
 Township 33 North,
 Range 9 East,
 Langlade County,
 Wisconsin.



T. 33 N., R. 9 E.

- (b) Describe any record evidence, monument evidence, occupational evidence, testimonial evidence or any other material evidence you considered, and whether the monument was found or placed.

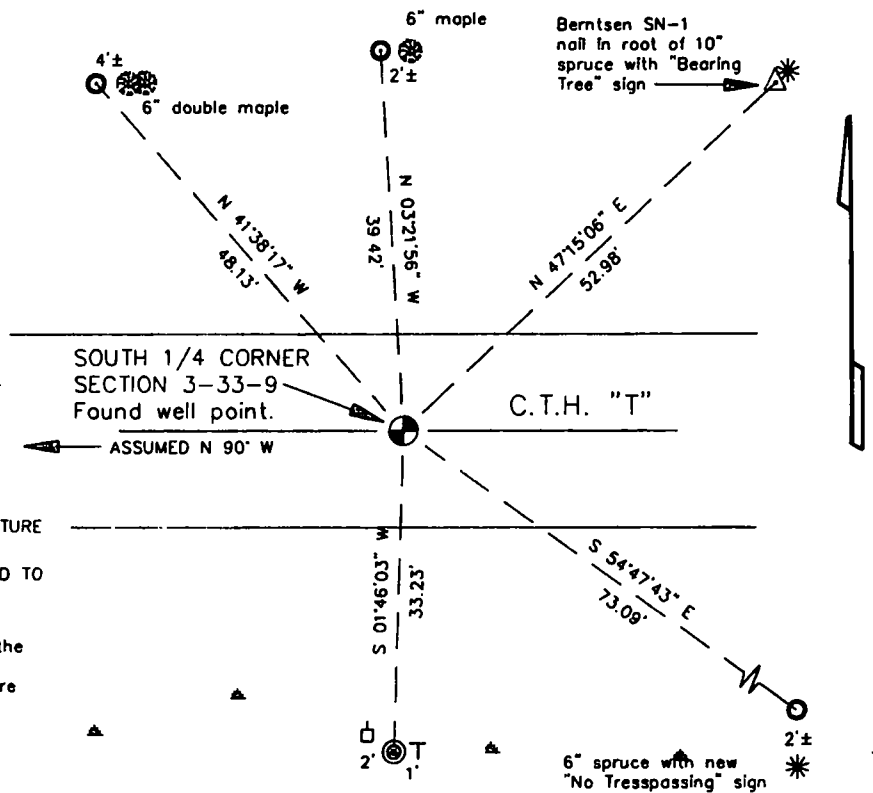
The original corner was established in 1860 by H.C. Fellows. Original BT's: birch, 8", N20°W, 11 lks., birch, 8", S30°W, 20 lks. In 1921, Malcolm Hutchinson found "stake by Dorr one orig BT" and marked two new BT's: birch, 10", N22°W, 49 1/4 lks., and a birch, 14", S50°W, 84 lks. 1930's resurvey either found corner or established it and set 4" iron pipe with brass cap witness 33' south, but I have no notes to know what was found or set for the actual corner. In 1979, Ray Hallisy found and made witness's to the 1930's witness monument. 1983, Glen Barker, CPI found iron in road for corner and witness monument. 06/07/96 D. Tlusty found 1 1/4" well point, 13" in road. Hutchinson used well points but didn't mentioned setting one here. (continued on reverse)

- (c) In the plan view drawing below, provide reference ties to at least 4 witness monuments, or, if the location is within a municipality, to at least 2 witness monuments. (Witness monuments shall be made of concrete, natural stone, iron or other equally durable material.) Describe witness monuments.

FB7-15

- (d) Show a plan view drawing depicting the relevant monuments and reference ties which is sufficient in detail to enable accurate relocation of the corner monument if the corner monument is disturbed. Indicate north.

NOTES:
 ● 4" IP W/BC WITNESS FOUND
 ○ 3/4" X 30" RE-BAR WITNESS SET
 □ POWER POLE
 ⊥ VINYL SIGN POST SET
 NOTHING SET AT SURFACE, AS IT WILL BE GROUND OFF IN NEAR FUTURE
 BEARINGS ASSUMED & REFERENCED TO APPROXIMATE CENTERLINE SHOWN.
 NOTE: This corner will be tied to the adjoining section corners after road construction in the near future



EJS

Describe any material discrepancy between the location of the corner as restored or reestablished and the location of that corner as previously restored or reestablished by distance and direction. Show the discrepancy on the plan view drawing under (d), above. Show the distances between the corner as previously restored or reestablished and (1) the corner as restored or reestablished, and (2) to at least 2 of the witness monuments shown on the drawing in (d), above.

NO DISCREPANCY

(f) Was the corner restored through acceptance of (1) an obliterated evidence location, or, (2) a found perpetuated location.?

A FOUND PERPETUATED LOCATION.

(g & h) Was the corner reestablished through lost corner proportionate methods? If so, show the method, including the directions and distances to other public land survey corners used as evidence or used for proportioning in determining the corner location.

(continued from front side)

Hutchinson's distances of 39.78 to the east and 39.61 to the west compare very good to the 1930's resurvey distances of 39.85 east and 39.62 west. I accept the location of the well point found as the best evidence of the original corner location and perpetuate said location as shown of the front side of this form.

(i) I, *David E. Tlusty* LANGLADE COUNTY SURVEYOR
(type or print name)
certify that the corner location shown on this record was determined by me or under my direction and control and that this U.S. Public Land Survey Monument Record is correct and complete to the best of my knowledge and belief.



David E. Tlusty 6/10/96
Signature Date

CERTIFIED LAND CORNER RESTORATION

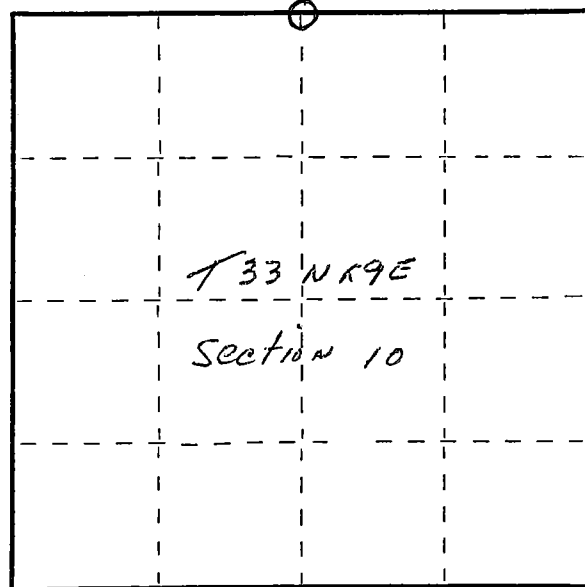
Index No. E-15

State of Wisconsin }
County of Langlade } ss.

I Raymond J. Hallisy, do hereby certify that on the 8th day of April, 1979, I found evidence of the 1/4 corner of Section 3 & 10 Township 33, North, Range 9E, Fourth Principal Meridian, as described hereon; and that from this evidence I established a new monument and accessories as described hereon to perpetuate the original location of this corner.

Resident witnesses:

.....
.....
.....



○ = Corner monument restored.

History of original corner establishment:

Corner set in the 1930 resurvey.

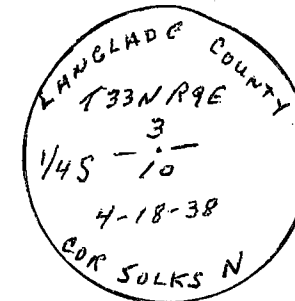
Description of corner evidence found:

4" pipe with brass cap, fence south

Description of monument and accessories I established to perpetuate the original location of this corner.

New BT's to Witness Corner

- 9" Spruce S28W 12' 7"
- 9" Light pole N22W 2' 2"
- 4" Spruce S50W 21'



Dated at Antigo, Wis., this 8th day of April, 1979.

Signature Raymond J. Hallisy Title Reg. Surveyor Registration No. S-685
(County Surveyor, Registered Land Surveyor, or other duly authorized official)

Office of Register of Deeds, County of _____, I hereby certify that the within instrument was filed in this office for record on the _____ day of _____, 19____ at _____ o'clock _____ M.

.....
(Register of Deeds)

By _____ Deputy