

CERTIFIED LAND CORNER RESTORATION

33-9
Index No. F-16

State of Wisconsin }
County of Langlade } ss.

I Raymond J. Hallisy, do hereby certify that on the 8th day of June, 1968, I found evidence of the E 1/16 corner of Section 10 Township 33, North, Range 9, Fourth, Principal Meridian, as described hereon; and that from this evidence I established a new monument and accessories as described hereon to perpetuate the original location of this corner.

History of original corner establishment:

Corner set in the 1930's.

Description of corner evidence found:

**Found squared stake down, paint intact.
Marked E 1/16 3 10 Cor S 50 Lks.**

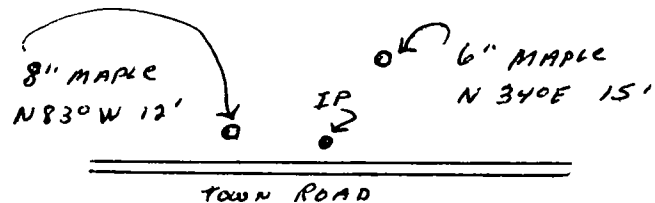
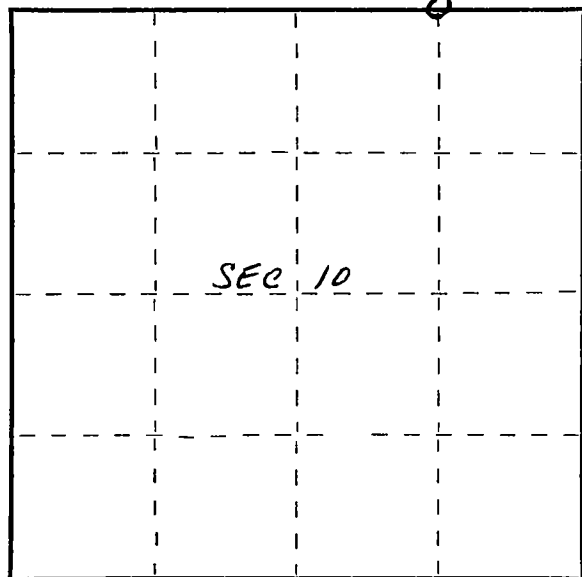
Resident witnesses:

.....
.....
.....

Description of monument and accessories I established to perpetuate the original location of this corner.

**Set Std. 1 1/2" pipe with cap marked W. C. C. 50 LKS. S.
BT's to witness corner.**

FORM 985 H. C. MILLER CO., MILWAUKEE



Dated at Antigo, Wis., this 8th day of June, 1968

Signature Raymond J. Hallisy Title Reg Land Surveyor Registration No. S-685
(County Surveyor, Registered Land Surveyor, or other duly authorized official)

Office of Register of Deeds, County of _____, I hereby certify that the within instrument was filed in this office for record on the _____ day of _____, 19____ at _____ o'clock _____ M.

.....
(Register of Deeds)

By.....Deputy

○ = Corner monument restored.