

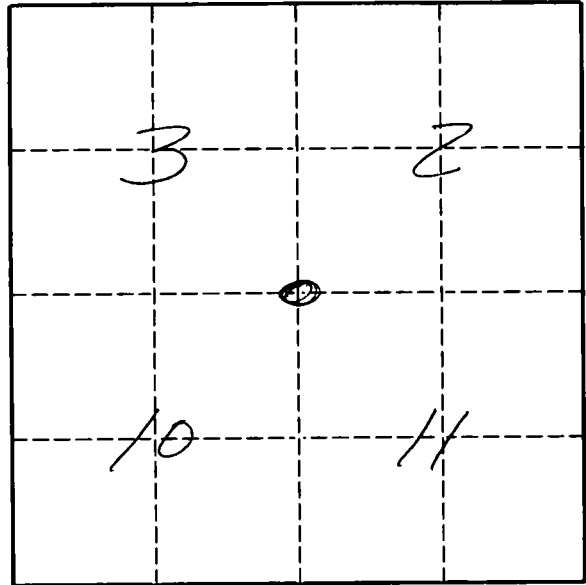
# U. S. PUBLIC LAND SURVEY MONUMENT RECORD

**INSTRUCTIONS:**

This record shall show the location of the corner and shall include all of the following nine elements (a through i).

- (a) Identify the corner by reference to the U.S. public land survey system.  
 O = Corner monument restored.

The Southwest corner of Section 2, Township 33 North, Range 9 East, Langlade County, Wisconsin.



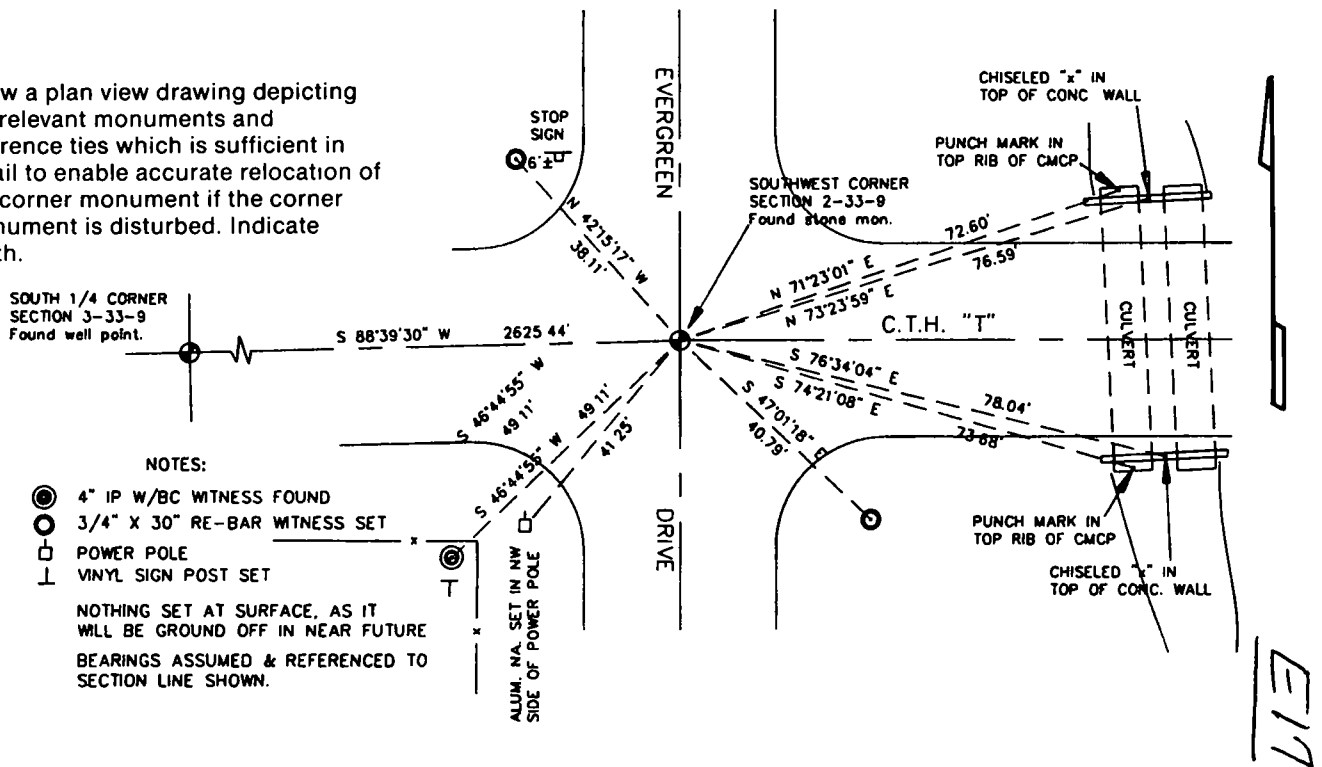
T. 33 N., R. 9 E.

- (b) Describe any record evidence, monument evidence, occupational evidence, testimonial evidence or any other material evidence you considered, and whether the monument was found or placed.

The original corner was established in 1860 by H.C. Fellows. Original BT's: tamarac, 15", N28°W, 23 lks., spruce, 12", S10°E, 32 lks. In 1921, Malcolm Hutchinson described the corner as a stone in road, small stones around it. He marked a spruce, 12", S35°W, 85 3/4 lks. The 1930's resurvey either found the corner or established it and set 4" iron pipe with brass cap witness 75 lks southwest, but I have no notes to know what was found or set for the actual corner. In 1979, Ray Hallisy found and made witness's to the 1930's witness monument. 06/07/96 D. Tlusty found a nail in the center of the intersection. 06/11/96 D. Tlusty, M. Kielcheski dug with backhoe, found 6" x 14" x 20" red granite boulder with "X" chiseled on top. (con't. on reverse)

- (c) In the plan view drawing below, provide reference ties to at least 4 witness monuments, or, if the location is within a municipality, to at least 2 witness monuments. (Witness monuments shall be made of concrete, natural stone, iron or other equally durable material.)  
 Describe witness monuments. FB7-13

- (d) Show a plan view drawing depicting the relevant monuments and reference ties which is sufficient in detail to enable accurate relocation of the corner monument if the corner monument is disturbed. Indicate north.



E17

Describe any material discrepancy between the location of the corner as restored or reestablished and the location of that corner as previously restored or reestablished by distance and direction. Show the discrepancy on the plan view drawing under (d), above. Show the distances between the corner as previously restored or reestablished and (1) the corner as restored or reestablished, and (2) to at least 2 of the witness monuments shown on the drawing in (d), above.

No discrepancy.

(f) Was the corner restored through acceptance of (1) an obliterated evidence location, or, (2) a found perpetuated location?  
A found perpetuated location.

(g & h) Was the corner reestablished through lost corner proportionate methods? If so, show the method, including the directions and distances to other public land survey corners used as evidence or used for proportioning in determining the corner location.  
No.

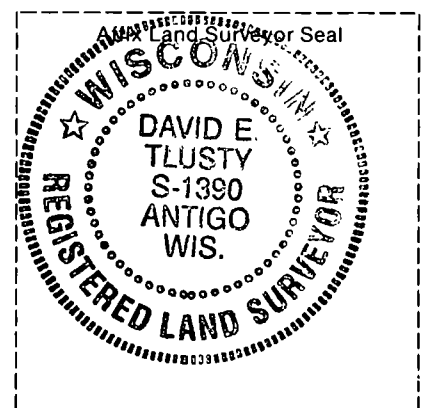
(continued from front side)

Stone found 2.5' below road surface. Accepted stone found as the best evidence of the original corner location. Replaced it with a 1½" x 36" iron pipe with 4" brass cap which is 2.2' below road surface.

David E. Tlusty,  
Langlade County Surveyor

(i) I, \_\_\_\_\_  
(type or print name)

certify that the corner location shown on this record was determined by me or under my direction and control and that this U.S. Public Land Survey Monument Record is correct and complete to the best of my knowledge and belief.



*David E. Tlusty* \_\_\_\_\_ 7/15/96  
Signature Date

CERTIFIED LAND CORNER RESTORATION

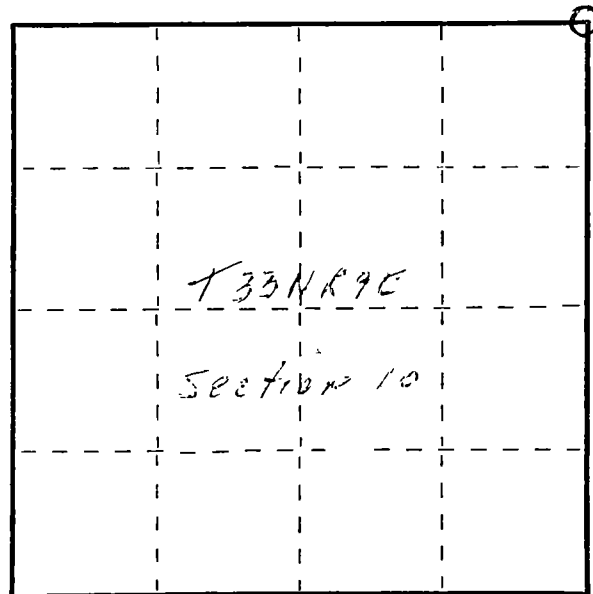
Index No. E-17

State of Wisconsin }  
County of Lanlade } ss.

I Raymond J. Hallisy, do hereby certify that on the 8th day of April, 1979, I found evidence of the Section corner of 2, 3, 10, & 11 Township 33, North, Range 9E, Fourth Principal Meridian, as described hereon; and that from this evidence I established a new monument and accessories as described hereon to perpetuate the original location of this corner.

Resident witnesses:

.....  
.....  
.....



○ = Corner monument restored.

History of original corner establishment:

Corner set in the 1930 resurvey.

Description of corner evidence found:

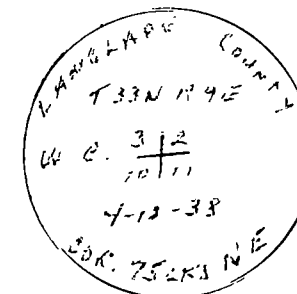
4" pipe with brass cap, witness corner.  
Corner sets in cross roads of Hiway "T" and town road. No trees nearby.

Description of monument and accessories I established to perpetuate the original location of this corner.

B.O's to witness Corner.

Light pole N77E 8' 10"  
Fence Corner N47E 2' 10"  
X on culvert S6E 100' 3"

Rock Mound



Dated at Antigo, Wis., this 8th day of April, 1979.

Signature Raymond J. Hallisy Title Reg. Surveyor Registration No. S-685  
(County Surveyor, Registered Land Surveyor, or other duly authorized official)

Office of Register of Deeds, County of \_\_\_\_\_, I hereby certify that the within instrument was filed in this office for record on the \_\_\_\_\_ day of \_\_\_\_\_, 19\_\_\_\_ at \_\_\_\_\_ o'clock \_\_\_\_\_ M.

.....  
(Register of Deeds)

By..... Deputy