

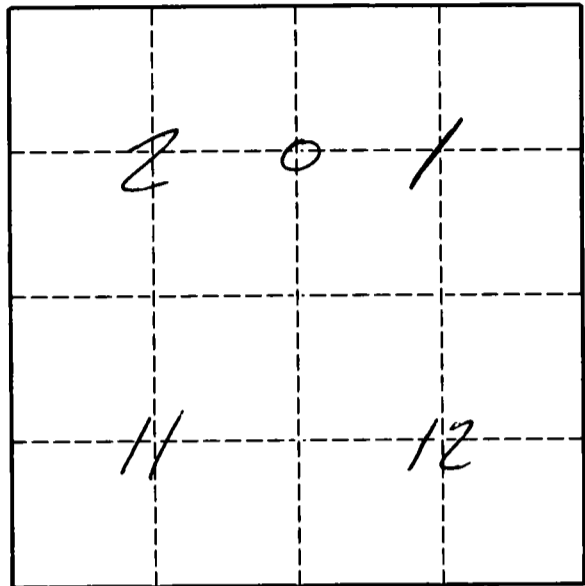
U. S. PUBLIC LAND SURVEY MONUMENT RECORD

INSTRUCTIONS:

This record shall show the location of the corner and shall include all of the following nine elements (a through i).

- (a) Identify the corner by reference to the U.S. public land survey system.
 O = Corner monument restored.

The West Quarter corner of Section 1, Township 33 North, Range 9 East, Langlade County, Wisconsin.



T. 33 N., R. 9 E.

- (b) Describe any record evidence, monument evidence, occupational evidence, testimonial evidence or any other material evidence you considered, and whether the monument was found or placed.

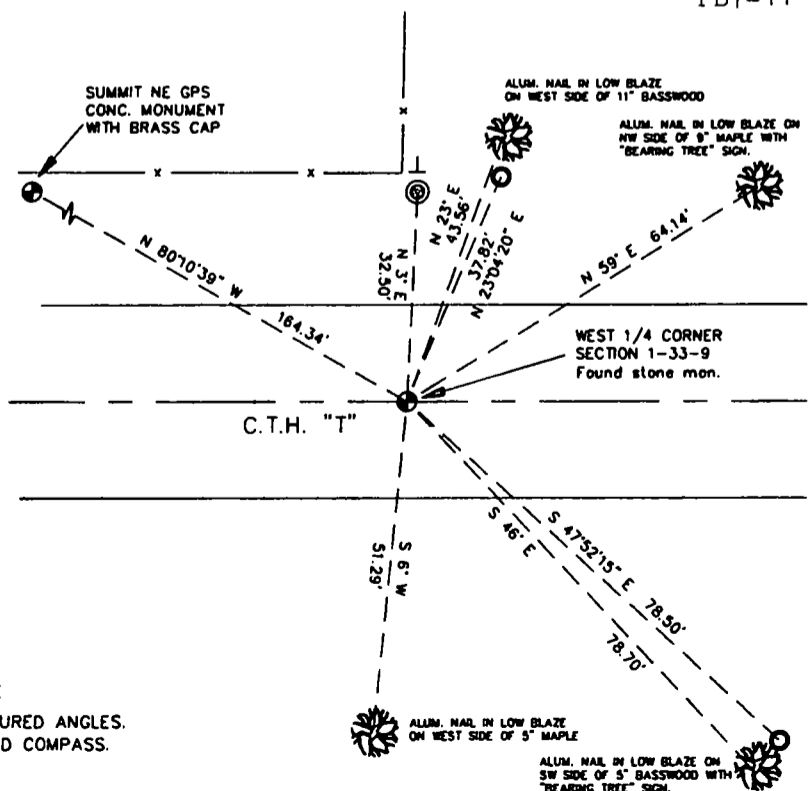
The original corner was established in 1860 by H.C. Fellows. Original BT's: sugar, 14", N86°W, 25 lks., hemlock, 9", N79°E, 70 lks. In 1938, Malcolm Hutchinson described the corner as "1/4 post". The 1938 resurvey map shows that a corner was found here, but I have no notes to know what was found or set for the actual corner. In 1977, Ray Hallisy found and made witness's to the 1930's witness monument which was set 33' north of the corner. 06/07/96 D. Tlusty found a nail 32.96 feet south of the existing witness monument. 06/11/96 D. Tlusty, M. Kielcheski dug with backhoe, found 8" x 10" x 16" stone with "X" chiseled on top. Accepted stone found as the best (con't. on reverse)

- (c) In the plan view drawing below, provide reference ties to at least 4 witness monuments, or, if the location is within a municipality, to at least 2 witness monuments. (Witness monuments shall be made of concrete, natural stone, iron or other equally durable material.)

FB7-11

Describe witness monuments.

- (d) Show a plan view drawing depicting the relevant monuments and reference ties which is sufficient in detail to enable accurate relocation of the corner monument if the corner monument is disturbed. Indicate north.



NOTES:

- ⊙ 4" IP W/BC WITNESS FOUND
 - ⊗ 3/4" X 30" RE-BAR WITNESS SET
 - POWER POLE
 - ⊥ VINYL SIGN POST SET
- NOTHING SET AT SURFACE, AS IT WILL BE GROUND OFF IN NEAR FUTURE
 MONUMENT BEARINGS BASED ON MEASURED ANGLES.
 TREE BEARINGS DETERMINED WITH HAND COMPASS.

21

Describe any material discrepancy between the location of the corner as restored or reestablished and the location of that corner as previously restored or reestablished by distance and direction. Show the discrepancy on the plan view drawing under (d), above. Show the distances between the corner as previously restored or reestablished and (1) the corner as restored or reestablished, and (2) to at least 2 of the witness monuments shown on the drawing in (d), above.

The stone monument found is N 68°45' W, 1.39 feet from the nail found.

(f) Was the corner restored through acceptance of (1) an obliterated evidence location, or, (2) a found perpetuated location?
A found perpetuated location.

(g & h) Was the corner reestablished through lost corner proportionate methods? If so, show the method, including the directions and distances to other public land survey corners used as evidence or used for proportioning in determining the corner location.

(continued from front side)

evidence of the original corner location. Replaced it with a 1½" x 36" iron pipe with 4" brass cap which is approx. 1.6' below road surface. Laid piece of 1 1/4" x 18" iron pipe above new monument. Gave stone monument to local resident, Alan Horn as he wanted it to paint up and display in his yard.

(i) I, David E. Tlusty, Langlade County Surveyor,
(type or print name)

certify that the corner location shown on this record was determined by me or under my direction and control and that this U.S. Public Land Survey Monument Record is correct and complete to the best of my knowledge and belief.



David E. Tlusty 7/16/96
Signature Date

CERTIFIED LAND CORNER RESTORATION

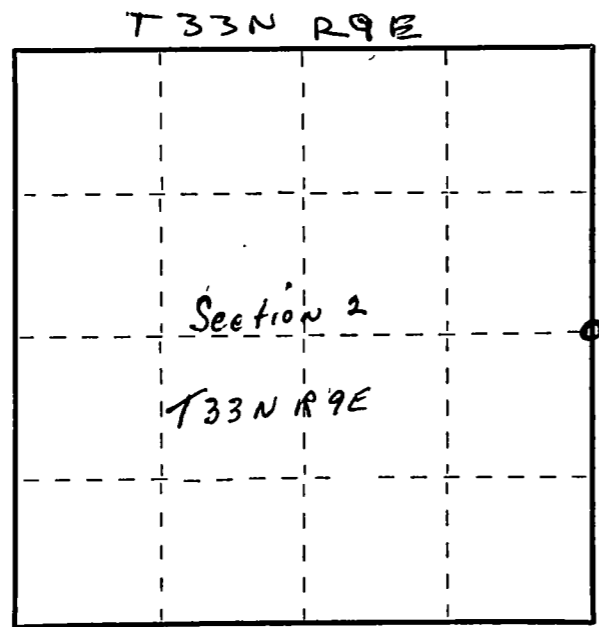
Index No. C-21

State of Wisconsin }
County of Langlade } ss.

I Raymond J. Hallisy do hereby
certify that on the 10th day
of September, 19 77, I found
evidence of the 1/4
corner of Section 1 & 2
Township 33, North, Range
9E, Fourth Principal Meridian,
as described hereon; and that from this evidence
I established a new monument and accessories
as described hereon to perpetuate the original
location of this corner.

Resident witnesses:

.....
.....
.....



○ = Corner monument restored.

History of original corner establishment:

Corner set in the 1930 resurvey.

Description of corner evidence found:

4" iron pipe with brass cap, 50 Links North of hiway "T"

Description of monument and accessories I established to perpetuate the original location of this corner.

New BT's to witness corner

- 12" Hard Maple N53E 5.4 Ft.
- 8" Hard Maple N31E 11.5 Ft.
- 16" Hard Maple N17E 24.4 Ft.



Dated at Antigo, Wis., this 10th day of September, 19 77.

Signature Raymond J. Hallisy Title Land Surveyor Registration No. S685
(County Surveyor, Registered Land Surveyor, or other duly authorized official)

Office of Register of Deeds, County of _____, I hereby certify that the within
instrument was filed in this office for record on the _____ day of _____, 19 _____
at _____ o'clock _____ M.

.....
(Register of Deeds)

By _____ Deputy

FORM 985 H. C. MILLER CO., MILWAUKEE