

# U.S. PUBLIC LAND SURVEY MONUMENT RECORD FOR LANGLADE COUNTY, WISCONSIN

Note: This form is intended and designed to fulfill all requirements of Wisconsin Administrative Code, Chapter A-E 5.02, U.S. Public Land Survey Monument Record (3) (a) (b) (c) (d) (e) (f) (g) (h) (i). Use additional sheet if necessary.

(a) The  section,  one quarter corner common to sections 2 & 11,

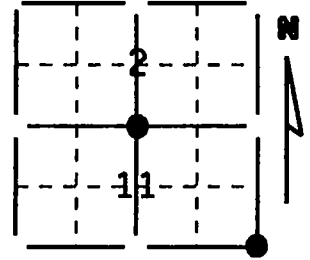
Township(s) 33 N, Range(s) 9 E

State plane coordinates: N \_\_\_\_\_

S \_\_\_\_\_

Town/City/Village Summit

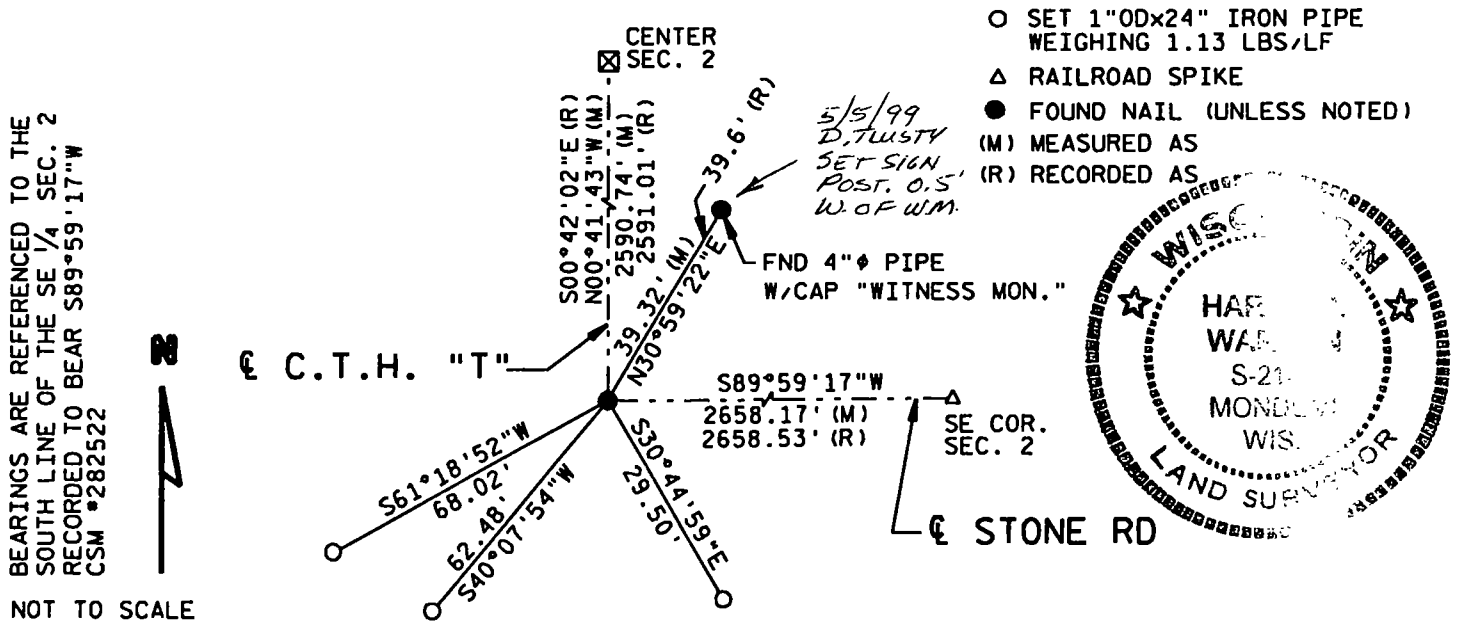
County Langlade



(b) (f) (g) (h) Description of monument found at this corner and if it was accepted, state all evidence (testimonial, occupational, plats, records, other monuments) used as a basis for accepting. If not accepted or nothing was found, state evidence used as a basis for establishing location and what was set. If reestablished through lost corner proportionate methods, indicate all monuments, distances and directions used.

Found nail near centerlines of town roads. Record distances to witness corner NE, quarter corner east and center of section north match measured well. (CSM #282522)

(c) (d) (e) Plan view of corner with ties to a least 4 witness monuments. If in disagreement with previously established corner, show the distances between the two corners and also indicated ties to disputed corner.



BEARINGS ARE REFERENCED TO THE SOUTH LINE OF THE SE 1/4 SEC. 2 RECORDED TO BEAR S89°59'17"W CSM #282522

NOT TO SCALE

(i) I certify that the corner location on this record was determined by me or under my direction and control and that this U.S. Public Land Survey Monument Record is correct and complete to the best of my knowledge and belief.

Harry B Warden                      December 13, 1995  
Signature                                      Date

INDEX # E19

Filed for record in Langlade County Surveyor's Office on 12/18/95 D. Flusty  
Date

CERTIFIED LAND CORNER RESTORATION

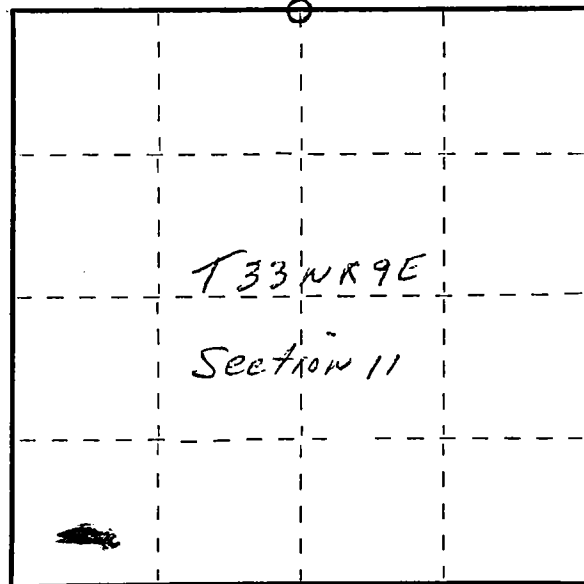
Index No. E-19  
33-9

State of Wisconsin }  
County of Lan glade } ss.

I Raymond J. Hallisy, do hereby certify that on the 8th day of April, 1979, I found evidence of the XX 1/4 corner of Section 2 and 11 Township 33, North, Range 9E, Fourth Principal Meridian, as described hereon; and that from this evidence I established a new monument and accessories as described hereon to perpetuate the original location of this corner.

Resident witnesses:

.....  
.....  
.....



○ = Corner monument restored.

History of original corner establishment:

Corner set in the 1930 resurvey.

Description of corner evidence found:

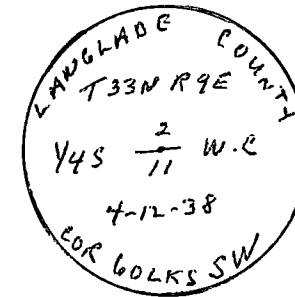
4" pipe with brass cap, witness corner. No trees nearby.

Description of monument and accessories I established to perpetuate the original location of this corner.

B. O.'s to witness corner.

X on culvert N8W 58' 1"  
Guy Rod N28E 11' 4"  
Light pole S37E 8' 6"

Rock mound



Dated at Antigo, Wis., this 8th day of April, 1979.

Signature Raymond J. Hallisy Title Reg. Surveyor Registration No. S-685  
(County Surveyor, Registered Land Surveyor, or other duly authorized official)

Office of Register of Deeds, County of \_\_\_\_\_, I hereby certify that the within instrument was filed in this office for record on the \_\_\_\_\_ day of \_\_\_\_\_, 19\_\_\_\_ at \_\_\_\_\_ o'clock \_\_\_\_\_ M.

.....  
(Register of Deeds)

By \_\_\_\_\_ Deputy