

U.S. PUBLIC LAND SURVEY MONUMENT RECORD FOR LANGLADE COUNTY, WISCONSIN

Note: This form is intended and designed to fulfill all requirements of Wisconsin Administrative Code, Chapter A-E 5.02, U.S. Public Land Survey Monument Record (3) (a) (b) (c) (d) (e) (f) (g) (h) (i). Use additional sheet if necessary.

(a) The section, one quarter corner common to sections 1, 2, 11 & 12,

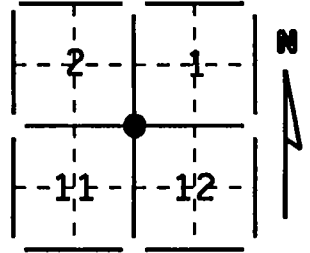
Township(s) 33 N, Range(s) 9 E

State plane coordinates: N _____

S _____

Town/City/Village Summit

County Langlade

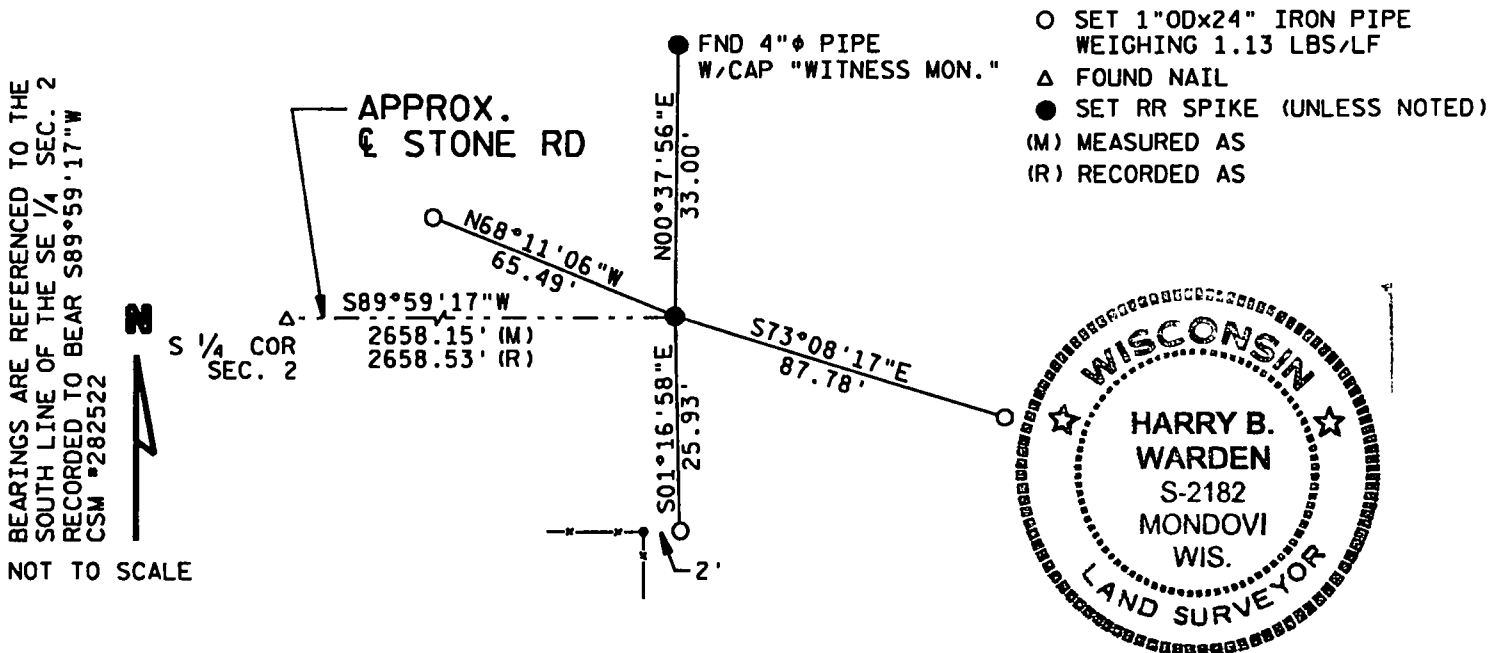


(b) (f) (g) (h) Description of monument found at this corner and if it was accepted, state all evidence (testimonial, occupational, plats, records, other monuments) used as a basis for accepting. If not accepted or nothing was found, state evidence used as a basis for establishing location and what was set. If reestablished through lost corner proportionate methods, indicate all monuments, distances and directions used.

Found 4" ϕ pipe w/cap "Witness Monument" leaning to the SW in swamp. We straightened it up and set a RR spike at the corner location, 33.00' south on line with fence to south. No other evidence was found. Distance to S $\frac{1}{4}$ corner of section 2 fit record (CSM #282522) well.

*5/5/99 D. FLUSTY FND W.M. ON N. SIDE OF ROAD. BRASS CAP IS BROKEN.
SET SIGN POST 0.5' EAST OF W.M.*

(c) (d) (e) Plan view of corner with ties to a least 4 witness monuments. If in disagreement with previously established corner, show the distances between the two corners and also indicated ties to disputed corner.



(i) I certify that the corner location on this record was determined by me or under my direction and control and that this U.S. Public Land Survey Monument Record is correct and complete to the best of my knowledge and belief.

Harry B Warden
Signature

December 13, 1995
Date

Filed for record in Langlade County Surveyor's Office on 12/18/95 D. Flusty

Date

INDEX # E21

CERTIFIED LAND CORNER RESTORATION

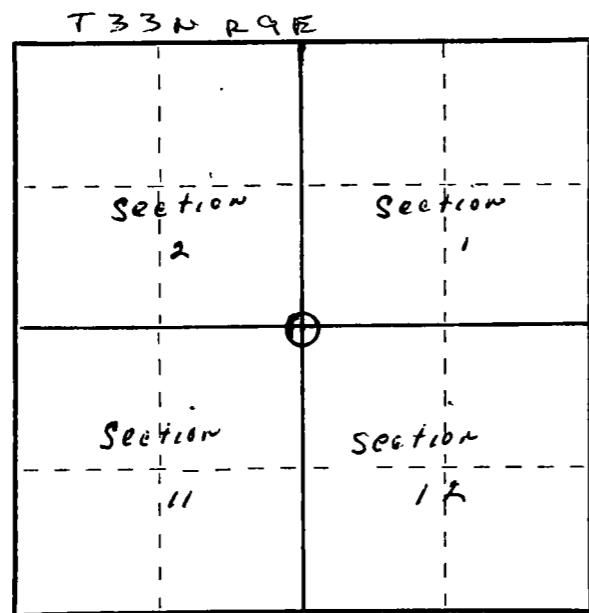
Index No. E-21

State of Wisconsin }
County of Langlade } ss.

I Raymond J. Hallisy, do hereby certify that on the 10th day of September, 1977, I found evidence of the Section corner of 1, 2, 11, & 12 Township 33 9E, North, Range 9E, Fourth Principal Meridian, as described hereon; and that from this evidence I established a new monument and accessories as described hereon to perpetuate the original location of this corner.

Resident witnesses:

.....
.....
.....



○ = Corner monument restored.

History of original corner establishment:

Corner set in the 1930 resurvey.

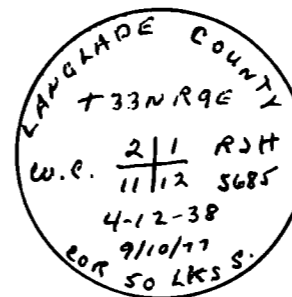
Description of corner evidence found:

4" iron pipe with brass cap 50 Links North of Stone Rd.

Description of monument and accessories I established to perpetuate the original location of this corner.

New BT's to witness corner.

- 6" Aspen N62W 20.5 Ft.
- 8" Aspen N42W 10.5 Ft.
- 7" Aspen N2W 9.8 Ft.



Dated at Antigo, Wis., this 10th day of September, 1977

Signature Raymond J. Hallisy Title Land Surveyor Registration No. S685
(County Surveyor, Registered Land Surveyor, or other duly authorized official)

Office of Register of Deeds, County of....., I hereby certify that the within instrument was filed in this office for record on the.....day of....., 19..... at.....o'clock..... M.

.....
(Register of Deeds)

By.....Deputy