

CERTIFIED LAND CORNER RESTORATION

Index No. C-25

State of Wisconsin }  
County of LANGLADE } ss.

I Raymond S. Hallisy, do hereby certify that on the 19th day of MARCH, 1988, I found evidence of the 1 1/2 corner of 1 1/2 Township 33, North, Range 9 E 10 E, Fourth Principal Meridian, as described hereon; and that from this evidence I established a new monument and accessories as described hereon to perpetuate the original location of this corner.

Resident witnesses:

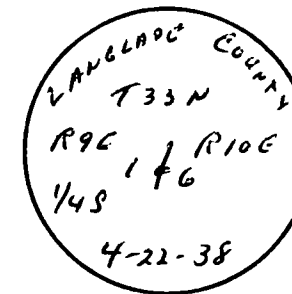
.....  
.....  
.....

History of original corner establishment:

CORNER SET IN THE 1930 RESURVEY

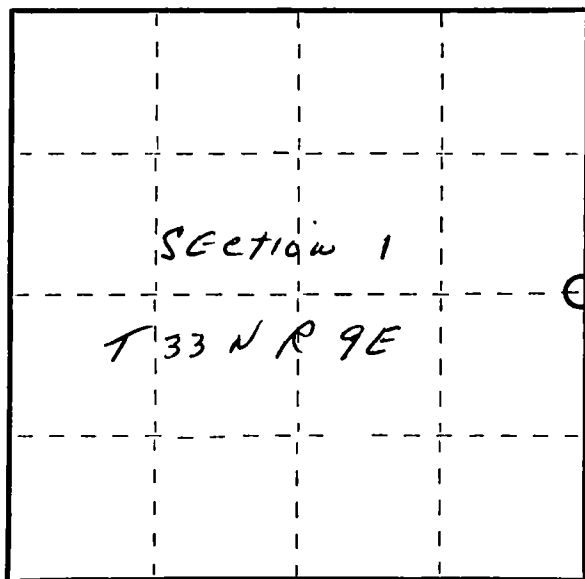
Description of corner evidence found:

4" IRON PIPE WITH BRASS CAP



Description of monument and accessories I established to perpetuate the original location of this corner.

NEW BT'S  
12" YELLOW BIRCH N5E 20' 9"  
10" HARD MAPLE S53E 21'  
14" RED MAPLE S47E 21' 1"  
16" HARD MAPLE S24W 11' 2"



○ = Corner monument restored.

Dated at Antigo, Wis., this 19th day of MARCH, 1988.

Signature Raymond S. Hallisy Title SURVEYOR Registration No. 5685  
(County Surveyor, Registered Land Surveyor, or other duly authorized official)

Office of Register of Deeds, County of \_\_\_\_\_, I hereby certify that the within instrument was filed in this office for record on the \_\_\_\_\_ day of \_\_\_\_\_, 19\_\_\_\_ at \_\_\_\_\_ o'clock \_\_\_\_\_ M.

.....  
(Register of Deeds)

By.....Deputy