

4330901 0020 2015

U.S. PUBLIC LAND SURVEY MONUMENT RECORD

(Prepared and as required by S. A-E 7.08 WI Administrative Code)

The SOUTH 1/4 corner of Section 1, T. 33 N., R. 09 E., Langlade County, WI
Corner was (check all that apply)

- Restored through acceptance of an obliterated evidence location.
- Restored through acceptance of a found perpetuated location.
- Determined to be lost and re-established through proportionate methods. (show bearings and distances to PLSS corners used for proportioning.)
- Restored/recovered/re-established in a location that differs from a previously established position. (Show difference in plan view below.)
- Check here if additional information is shown on the reverse side of this form.

Describe record evidence, recovered physical evidence, occupational evidence, testimonial evidence, and all other evidence considered in the recovery/restoration of the corner.

1860 - Government Surveyor, H.C. Fellows set original quarter section post and marked bearing trees, Cedar 12", S 56° E, 13 links, and Cedar 11", N 67° W, 19 links.

1938 - GLO Re-survey map # 40365 indicates the corner was set, but no notes are available to know what was set for corner. A 4" brass capped iron pipe witness monument was set 33' north of corner.

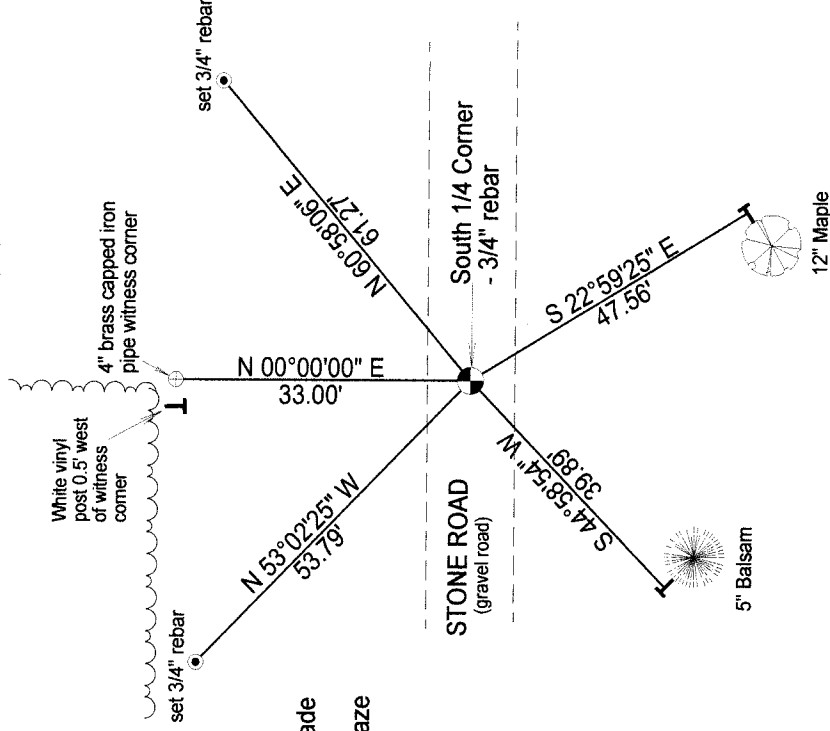
1979 - Raymond Hallisy, found and made witness's to the 1938 witness monument.

2015 - I found the existing 4" brass capped witness monument set in 1938, 33' north of corner. I searched 33' south of the witness monument and did not find anything. I set a 3/4" rebar 33' south of the witness monument.

Physical description of the monument set:

2015 - I set a 3/4" rebar 1± below road surface and tied it out as follows

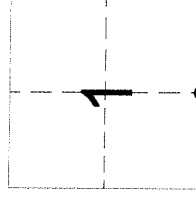
Describe the accessories used to perpetuate the location of the corner. Include a plan view drawing and indicate accessories found/set. Describe measuring point on bearing trees. Show any topographic features that would aid in future recovery of the corner.



Notes:

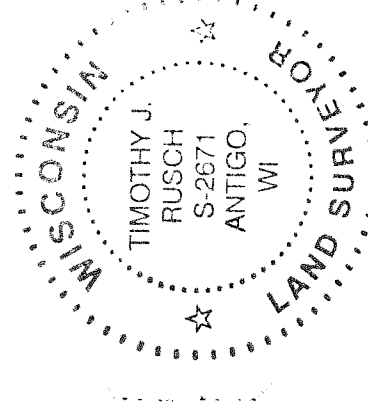
- Not drawn to any scale.
- All bearing trees with Langlade County bearing tree plaque, chest blaze, and low side blaze with aluminum nail.

The SOUTH 1/4
Corner of Section 1
T. 33 N., R. 09 E.
Langlade County, WI



● = Location of corner

SURVEYORS SEAL



Timothy J. Rusch

I, Timothy J. Rusch certify that the corner location shown on this record was determined by me or under my direction and control and that this U.S. Public Land Survey Monument Record is correct and complete to the best of my knowledge and belief.

Timothy J. Rusch 05/27/2015
Signature Date