

CERTIFIED LAND CORNER RESTORATION

Index No. E-25

State of Wisconsin }
 County of LANGLADE } ss.

I WILLIAM F. KELLY, do hereby certify that on the 17th day of DEC., 1981, I found evidence of the SE corner of SEC. 1 Township 33, North, Range 9 E., Fourth Principal Meridian, as described hereon; and that from this evidence I established a new monument and accessories as described hereon to perpetuate the original location of this corner.

Resident witnesses:

.....

History of original corner establishment:

ORIGINAL CORNER ESTABLISHED BY
 KIRAM C. FELLOWS IN SEPT-OCT, 1860.

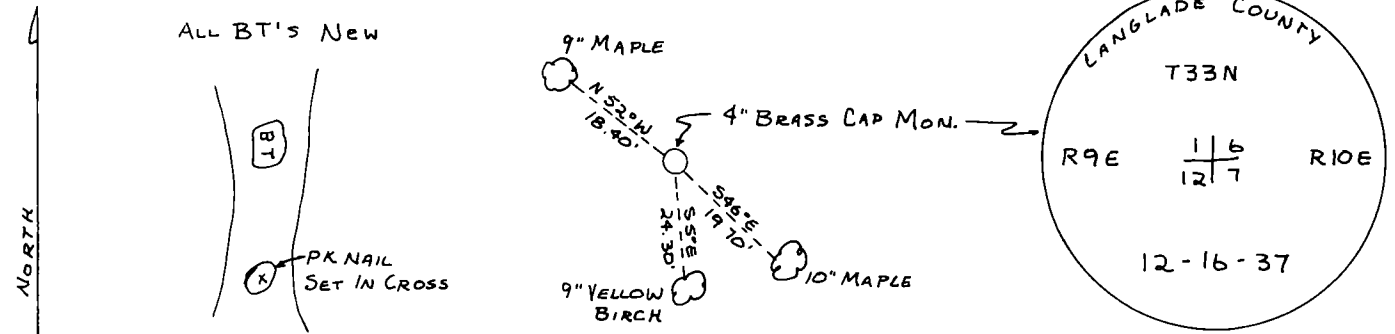
CCC RETURNED IN 1937 SET
 BRASS CAP

Description of corner evidence found:

4" BRASS CAP MONUMENT,
 FOUND IN PLACE.
 MARKED 3 BT'S.



Description of monument and accessories I established to perpetuate the original location of this corner.



Dated at ELCHO, Wis., this 17th day of DEC., 1981.

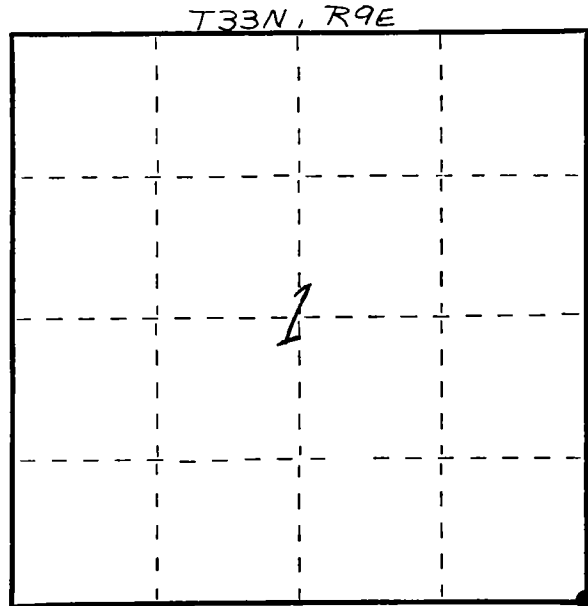
Signature William F. Kelly Title COUNTY SURVEYOR Registration No. 1098
 (County Surveyor, Registered Land Surveyor, or other duly authorized official)

Office of Register of Deeds, County of....., I hereby certify that the within instrument was filed in this office for record on the..... day of....., 19..... at..... o'clock..... M.

(Register of Deeds)

By..... Deputy

FORM 985 M. C. MILLER CO., MILWAUKEE



○ = Corner monument restored.