

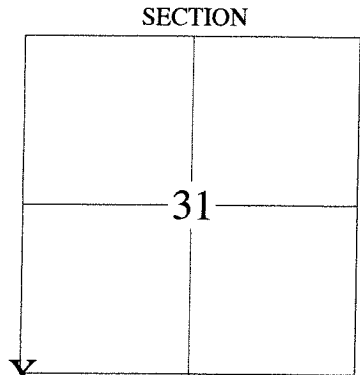
**LANGLADE COUNTY U.S. PUBLIC LAND
SURVEY MONUMENT LOCATION RECORD**

CORNER LOCATION: SOUTHWEST CORNER
 MONUMENT TYPE: EXISTING MAG SPIKE
 COUNTY COORDINATE: N 396312.19 E 550259.48
 HORIZONTAL DATUM: WCCS LANGLADE CO. NAD83 2011
 DATE OF SURVEY: 12-2-2017
 SURVEY PARTY: JASON J. PFLIEGER

FOUND SECTION 31
 SET TOWNSHIP 33 NORTH
 RE-SET RANGE 9 EAST
 RE-TIED TOWN OF SUMMIT

BASIS FOR MONUMENT LOCATION:

1851: ORIGINAL CORNER ESTABLISHED BY JAMES MARSH
 1936: STONE SET BY C.H. PARKER
 1997: DAVID TLUSTY FOUND A STONE BELOW ROAD SURFACE AND TIED OUT THE CORNER.
 2017: I FOUND A MAG SPIKE THAT FIT EXISTING TIES. I ADDED 1 TIE AS SHOWN.



LOCATION INDICATED BY 'X'

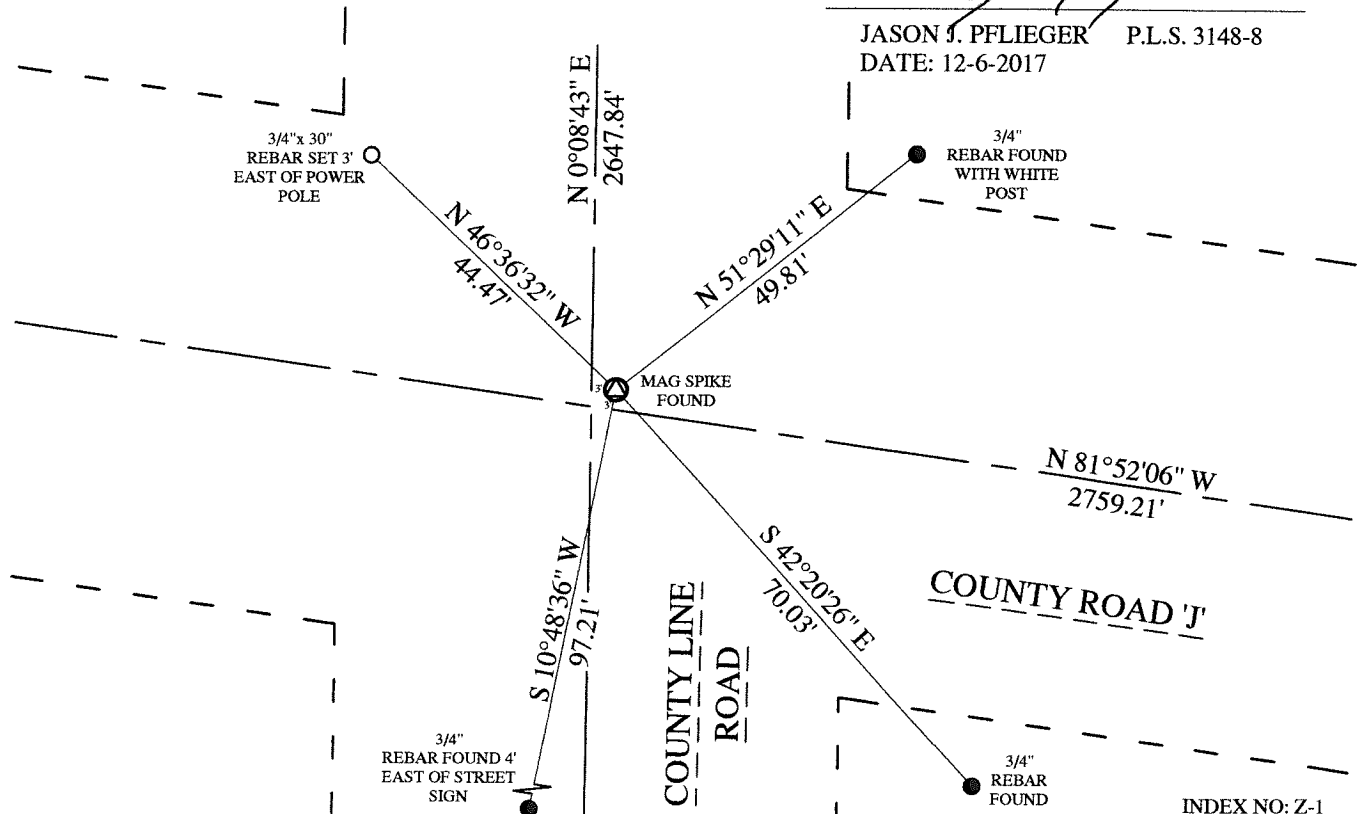
4330836 0000 2017



[Signature]

JASON J. PFLIEGER P.L.S. 3148-8
 DATE: 12-6-2017

TIE SKETCH:



INDEX NO: Z-1