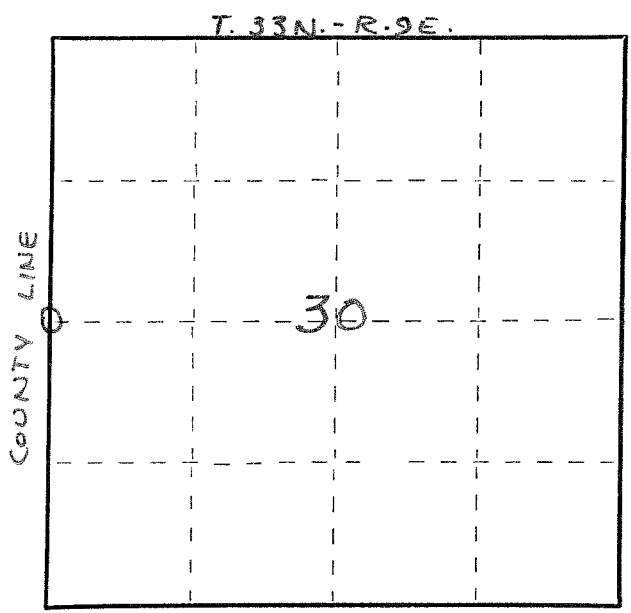


4330825 2000 1977

FORM 985 H. C. MILLER CO., MILWAUKEE



O = Corner monument restored.

State of Wisconsin }  
County of LANGLADE } ss.

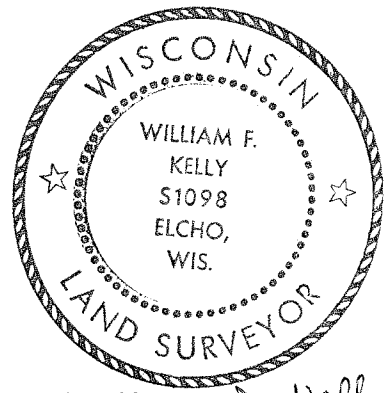
I WILLIAM F. KELLY, do hereby certify that on the 16<sup>TH</sup> day of SEPTEMBER, 1977, I found evidence of the 1/4 corner of SECTIONS 25 & 30 Township 33, North, Range BE & 9E, Fourth Principal Meridian, as described hereon; and that from this evidence I established a new monument and accessories as described hereon to perpetuate the original location of this corner.

Resident witnesses:

.....  
.....  
.....

### CERTIFIED LAND CORNER RESTORATION

History of original corner establishment:

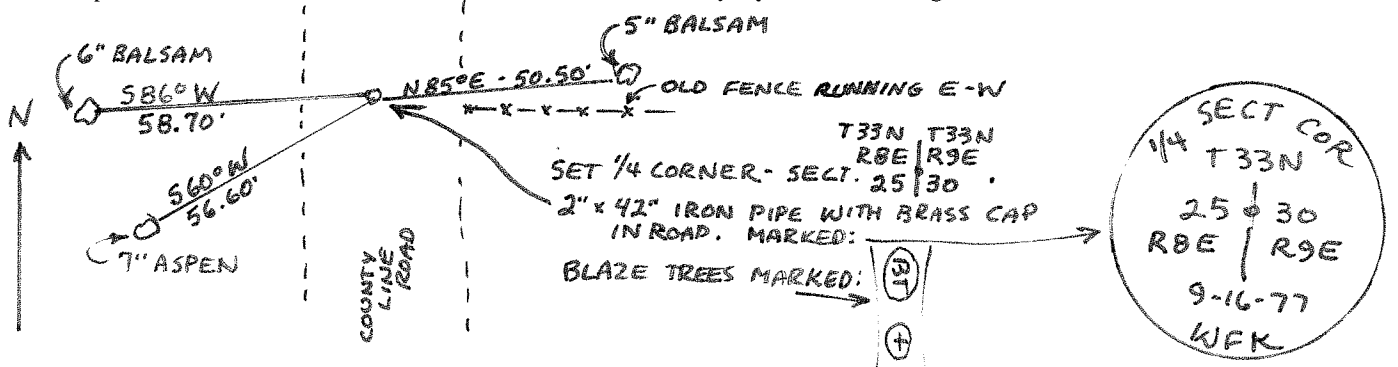


*William F. Kelly 9-16-77*

Index No. T-1

Description of corner evidence found:  
CORNER PROPORTIONED FROM ORIGINAL NOTES BETWEEN NW CORNER AND SW CORNER SECTION 30 T.33N. - R.9E.  
LOCATED SECTION CORNER STONES SET IN THE 1920'S.

Description of monument and accessories I established to perpetuate the original location of this corner.



Dated at ELCHO, Wis., this 16<sup>TH</sup> day of SEPTEMBER, 1977.

Signature William F. Kelly Title REGISTERED LAND SURVEYOR Registration No. 51098  
(County Surveyor, Registered Land Surveyor, or other duly authorized official)

Office of Register of Deeds, County of \_\_\_\_\_, I hereby certify that the within instrument was filed in this office for record on the \_\_\_\_\_ day of \_\_\_\_\_, 19\_\_\_\_ at \_\_\_\_\_ o'clock \_\_\_\_\_ M.

.....  
(Register of Deeds)

By \_\_\_\_\_ Deputy