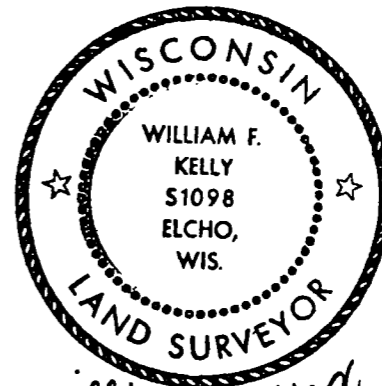


CERTIFIED LAND CORNER RESTORATION

Index No. P-1

State of Wisconsin }  
County of LANGLADE } ss.

History of original corner establishment:



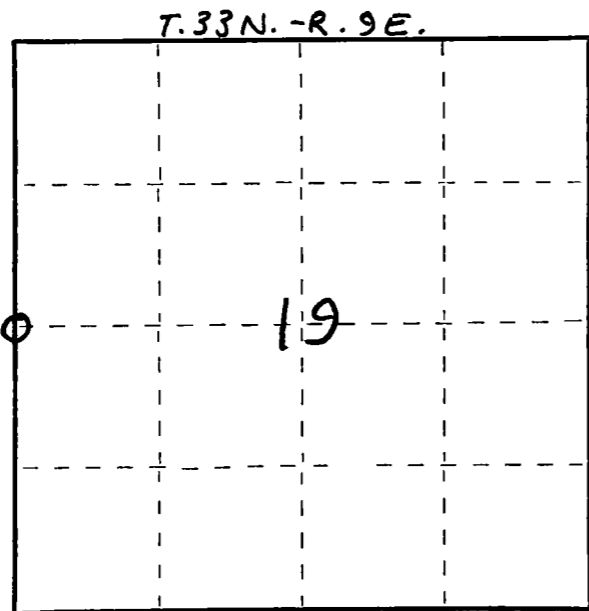
*William F. Kelly* 9-23-77

I WILLIAM F. KELLY, do hereby certify that on the 23RD day of SEPTEMBER, 1977, I found evidence of the 1/4 SECTION corner of SECTION 24 & 19 Township 33, North, Range 8 & 9 E, Fourth Principal Meridian, as described hereon; and that from this evidence I established a new monument and accessories as described hereon to perpetuate the original location of this corner.

Description of corner evidence found:  
LOCATED 6" GRANITE MONUMENT BROKEN IN PIECES.

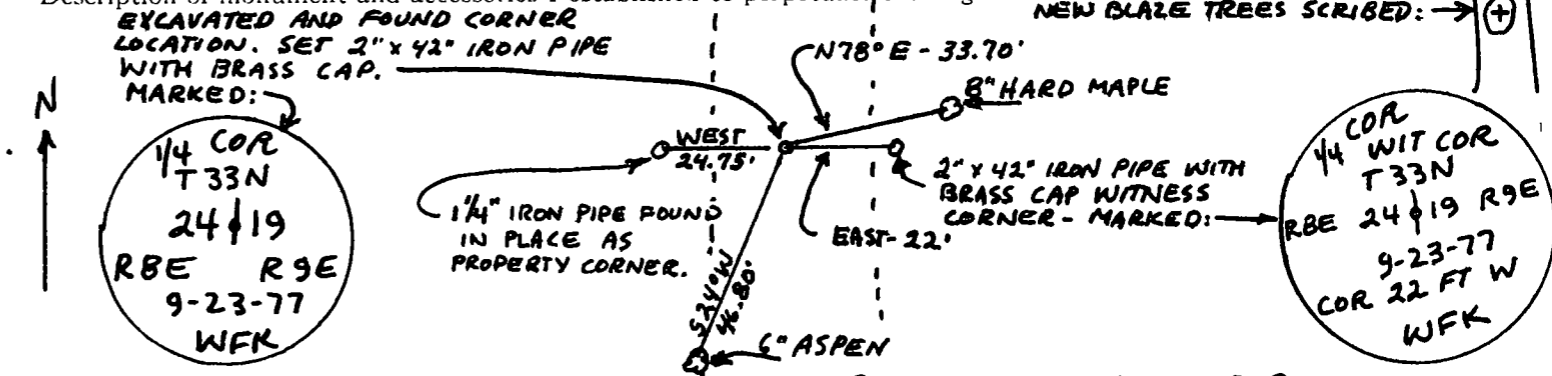
Resident witnesses:

FORM 985 H. C. MILLER CO., MILWAUKEE



○ = Corner monument restored.

Description of monument and accessories I established to perpetuate the original location of this corner.



Dated at ELCHO, Wis., this 23RD day of SEPTEMBER, 1977

Signature William F. Kelly Title REGISTERED LAND SURVEYOR Registration No. 51098  
(County Surveyor, Registered Land Surveyor, or other duly authorized official)

Office of Register of Deeds, County of \_\_\_\_\_, I hereby certify that the within instrument was filed in this office for record on the \_\_\_\_\_ day of \_\_\_\_\_, 19\_\_\_\_ at \_\_\_\_\_ o'clock \_\_\_\_\_ M.

(Register of Deeds)

By \_\_\_\_\_ Deputy