

CERTIFIED LAND CORNER RESTORATION

Index At L-1

State of Wisconsin }  
 County of LANGLADE } ss.

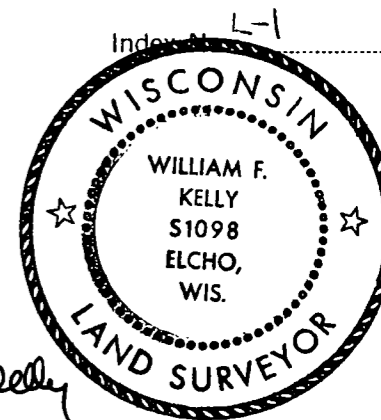
I WILLIAM F. KELLY do hereby certify that on the 25<sup>TH</sup> day of NOVEMBER, 1975, I found evidence of the 1/4 CORNER corner of SECTIONS 13 & 18 Township 33, North, Range 8E & 9E, Fourth Principal Meridian, as described hereon; and that from this evidence I established a new monument and accessories as described hereon to perpetuate the original location of this corner.

Resident witnesses:

A. SCHAUFELBERGER

History of original corner establishment:

WITNESS CORNER SET BY A.W. KORPICK ON OCT. 18, 1964.

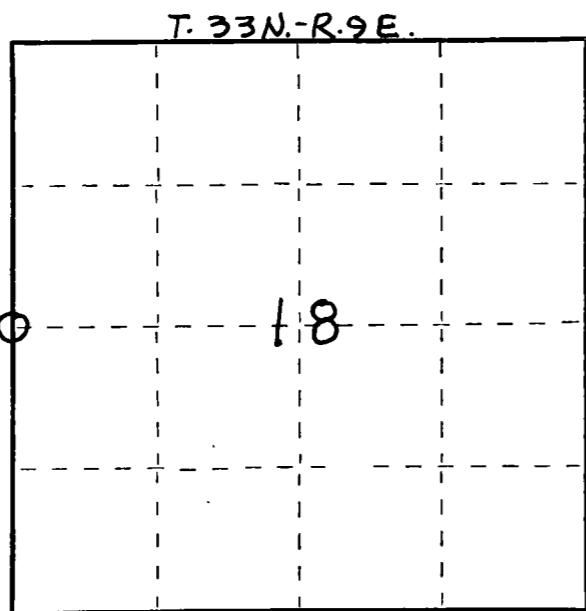


*William F. Kelly*

Description of corner evidence found:

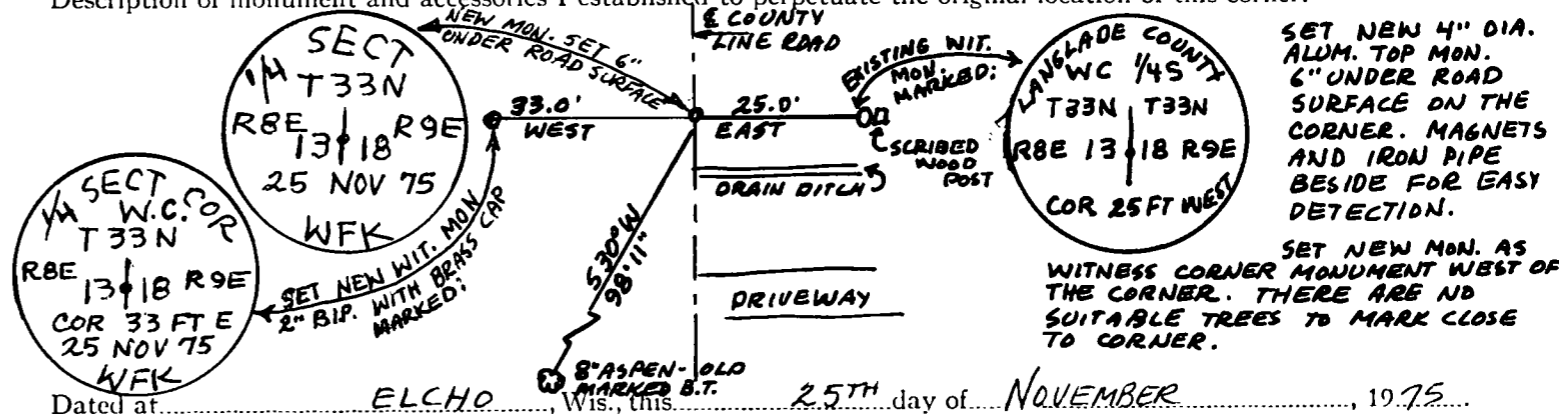
LOCATED WITNESS CORNER FROM NOTES BY A.W. KORPICK OF OCT. 18, 1964. FOUND SCRIBED WOOD POST AND BRASS CAPPED IRON PIPE SET IN CONCRETE. RESIDENT WITNESS REPORTED THAT CORNER WAS DESTROYED DURING ROAD WORK AS ORIGINAL STONE WAS REMOVED.

FORM 985 M. C. MILLER CO., MILWAUKEE



○ = Corner monument restored.

Description of monument and accessories I established to perpetuate the original location of this corner.



Dated at ELCHO, Wis., this 25<sup>TH</sup> day of NOVEMBER, 1975.

Signature William F. Kelly Title REGISTERED LAND SURVEYOR Registration No. 5 1098  
 (County Surveyor, Registered Land Surveyor, or other duly authorized official)

Office of Register of Deeds, County of \_\_\_\_\_, I hereby certify that the within instrument was filed in this office for record on the \_\_\_\_\_ day of \_\_\_\_\_, 19\_\_\_\_ at \_\_\_\_\_ o'clock \_\_\_\_\_ M.

(Register of Deeds)

By \_\_\_\_\_ Deputy

CERTIFIED LAND CORNER RESTORATION

23-9

Index No. L-1

State of Wisconsin }  
County of Langlade } ss.

I Raymond J. Hallisy, do hereby certify that on the 20th day of July, 1968, I found evidence of the W 1/4 corner of Section 18 Township 33, North, Range 9, Fourth Principal Meridian, as described hereon; and that from this evidence I established a new monument and accessories as described hereon to perpetuate the original location of this corner.

Resident witnesses:

.....  
.....  
.....

History of original corner establishment:

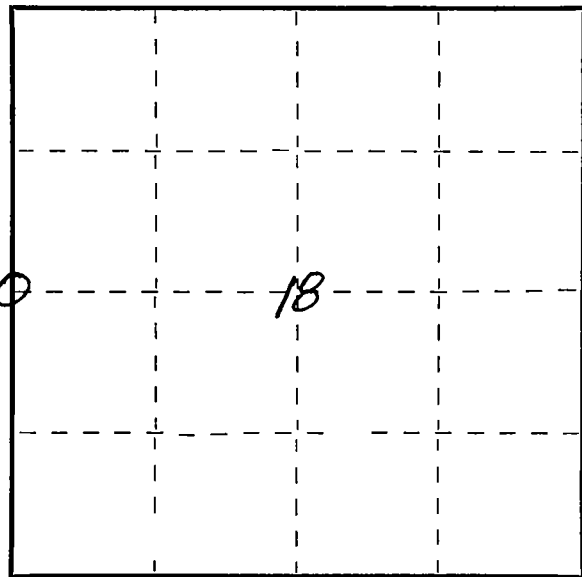
Corner set by A.W.Kordick, Wis. Land Surveyor. Oct. 18, 1964

Description of corner evidence found:

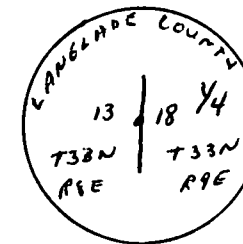
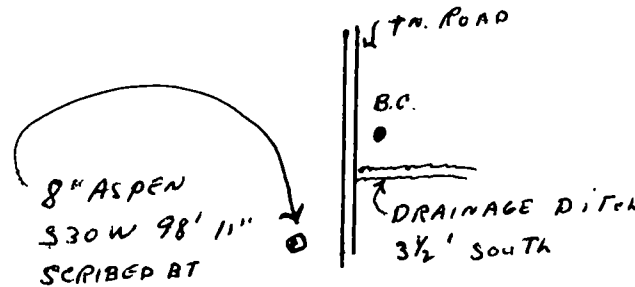
Found squared stake marked S18 1/4 S 25 Ft West to Cor  
Also 2" iron pipe

Description of monument and accessories I established to perpetuate the original location of this corner.

Set Brass Cap in cement over 2" iron pipe 4' long



○ = Corner monument restored.



Dated at Antigo, Wis., this 20th day of July, 1968

Signature Raymond J. Hallisy Title Reg. Land Surveyor Registration No. L-685  
(County Surveyor, Registered Land Surveyor, or other duly authorized official)

Office of Register of Deeds, County of \_\_\_\_\_, I hereby certify that the within instrument was filed in this office for record on the \_\_\_\_\_ day of \_\_\_\_\_, 19\_\_\_\_ at \_\_\_\_\_ o'clock \_\_\_\_\_ M.

.....  
(Register of Deeds)

By \_\_\_\_\_ Deputy

FORM 985 H. C. MILLER CO., MILWAUKEE