

# LANGLADE COUNTY U.S. PUBLIC LAND CORNER RESTORATION

The East quarter corner of Section 12, T. 33 N., R. 8 E., Lincoln County, WI.  
The West quarter corner of Section 7, T. 33 N., R. 9 E., Langlade County, WI.

**Corner was: (check all that apply)**

4330812 2000

- Restored through acceptance of an obliterated evidence location.
- Restored through acceptance of a found perpetuated location.
- Determined to be lost and re-established through proportionate methods.
- Show bearings and distances to PLSS corners used for proportioning, and show original distances).
- Restored/recovered/re-established in a location that differs from a previously established position.
- (Show difference in plan view below).
- Check here if additional information is shown on the reverse side of this form.

**Describe record evidence, recovered physical evidence, occupational evidence, testimonial evidence and all other evidence considered in the recovery/restoration of the corner.**

The original corner was established in 1851 by James M. Marsh. Original bearing trees: tamarac, 12", S31E, 36 lks; a birch, 10", S02W, 60 lks; a birch, 24", N50W, 16 lks and a birch, 24", N63E, 27 links.

The 1938 survey map by D. A. Hintz shows part of this township and shows that something was found at this corner location. In some misc. notes by Hintz, he said "Notes from Town Clerk find 2 new BT's: s. maple, 16", N77E 109 & birch, 18", N64W, 91 links. In 1975, former surveyor Kelly: "Located witness corner to 1/4 sect. corner.." "Resident witness identified witness corner. Excavated road and found field stone with + mark. Stone was tilted at an angle of 45". Kelly set "new mon. on 1/4 cor. with stone left in place. Top of mon. 6" under road surface.

11/02/16 D. Tlusty found an aluminum monument and magnet. Top is broken off and monument leans to the south approximately 0.6'. I removed the damaged aluminum monument, dug wider and deeper and found a 7" x 7" x 22" granite stone lying on its side, to the west of the aluminum monument. Found no evidence of a field stone mentioned by Kelly. On the south end of the granite stone, I found a chiseled diagonal groove, which I believe was the top of the stone. The north end of the granite appears to be the base, and at a straightened position for the granite stone and at 33 feet west of the still solid and upright 1938 witness monument, I set the monument described below as the true position for the quarter corner.

**Physical description of the monument set:**

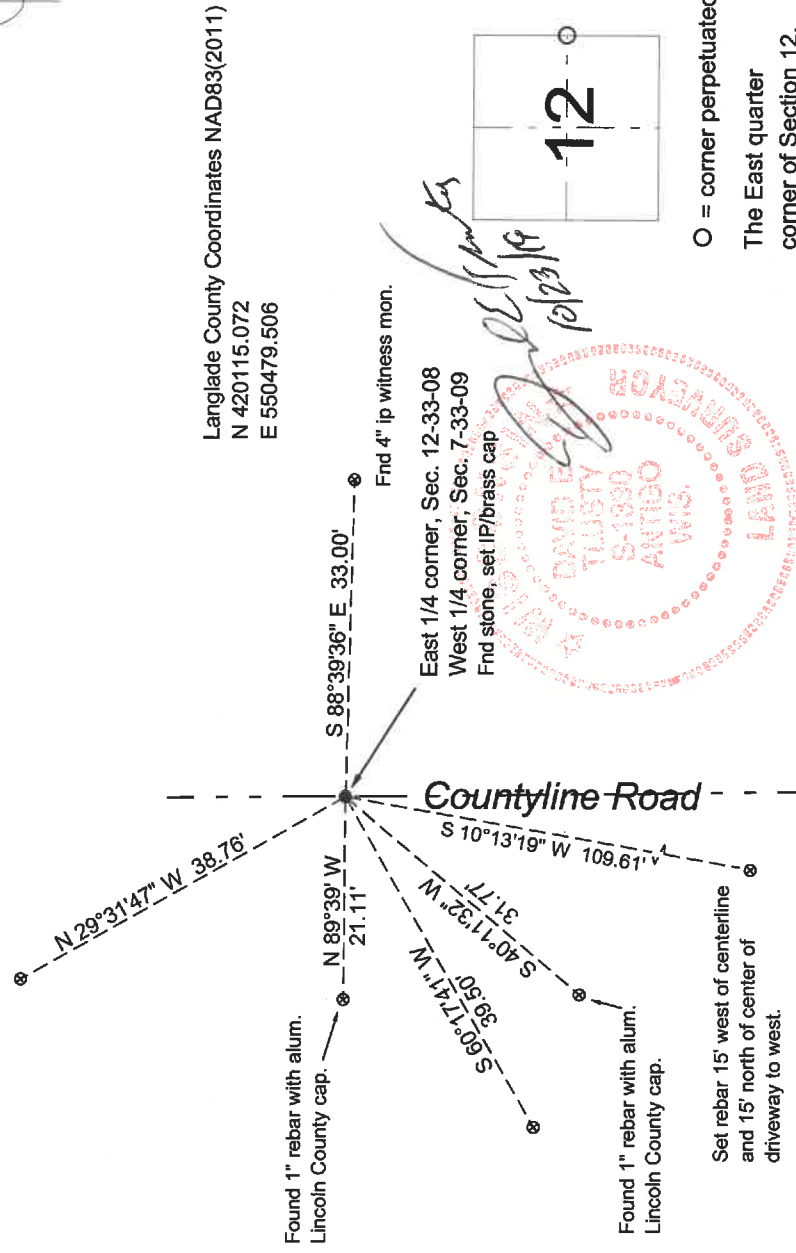
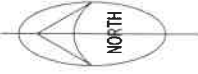
At the corner location described above, I set a 2" x 30" galvanized flanged bottom iron pipe with brass cap, top of which is 0.9' below road surface. I set and measured witness monuments as shown below.

**Describe the accessories used to perpetuate the corner. Include a plan view drawing and accessories found/set. Describe measuring point on bearing trees. Show any topographic features that would aid in future recovery of the corner.**

**LEGEND**

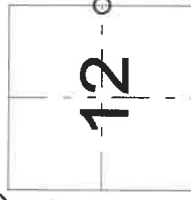
- iron pipe fnd
  - ⊗ 3/4" x 30" rebar set unless noted otherwise
- Bearings are Langlade County grid bearings.

Field book: FB24-36



Langlade County Coordinates NAD83(2011)  
N 420115.072  
E 550479.506

Index No. G1 33-09



○ = corner perpetuated  
The East quarter corner of Section 12, T. 33 N., R. 8 E.,

I, David E. Tlusty, Registered Land Surveyor, as Langlade County Surveyor, certify that the corner location on this record was determined by me and that this U.S. Public Land Survey Monument Record is correct to the best of my knowledge and belief.