

# LANGLADE COUNTY U.S. PUBLIC LAND CORNER RESTORATION

The Southeast corner of Section 12, T. 33 N., R. 8 E., Lincoln County, WI.  
The Southwest corner of Section 7, T. 33 N., R. 9 E., Langlade County, WI.

**Corner was: (check all that apply)**

4330812 0000

- Restored through acceptance of an obliterated evidence location.
- Restored through acceptance of a found perpetuated location.
- Determined to be lost and re-established through proportionate methods.
- Show bearings and distances to PLSS corners used for proportioning, and show original distances).
- Restored/recovered/re-established in a location that differs from a previously established position.
- (Show difference in plan view below).
- Check here if additional information is shown on the reverse side of this form.

**Describe record evidence, recovered physical evidence, occupational evidence, testimonial evidence and all other evidence considered in the recovery/restoration of the corner.**

The original corner was established in 1851 by James. M. March. Original bearing trees: tamarac, 9", S27 E, 24 lks., tamarac, 12", S05W., 37 lks., tamarac, 12", N73W, 22 lks., and a tamarac, 12", N28E, 10 lks. 1938 survey notes by D. Hintz shows " W.C. 50 E., and tam slip NE". In 1975, former surveyor Kelly said " Resident witness identified locaton of witness corner set in April, 1938. Stone in road found 3.5' under surface. Set 4" aluminum top monument . Placed iron pipe under top of mon. 6" under road surface". 11/02/16 D. Tlusty found aluminum monument with magnet, 0.5' below road surface. Top is broken off but monument is straight. Found 1938 witness monument 33.04' east. Accepted monument as found as the best evidence of a perpetuated location of the corner. I measured reference monuments shown below.

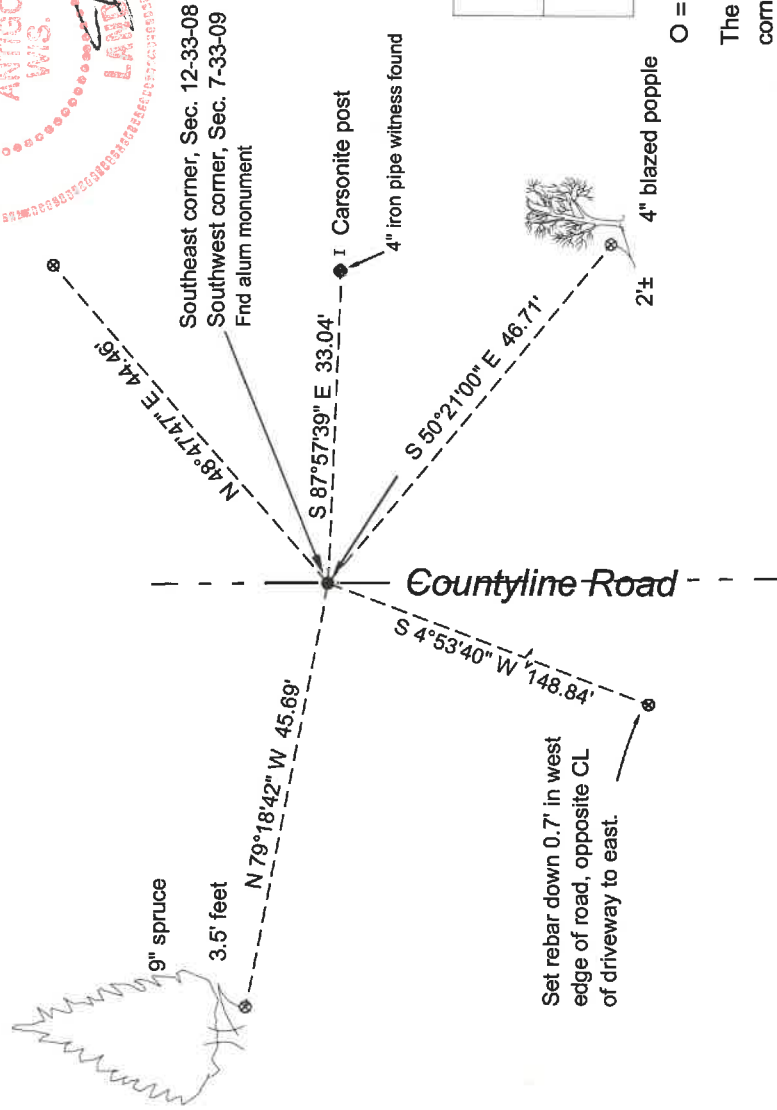
**Physical description of the monument set:**

I left the existing aluminum monument in place, as found.

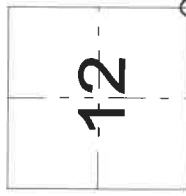
**Describe the accessories used to perpetuate the corner. Include a plan view drawing and accessories found/set. Describe measuring point on bearing trees. Show any topographic features that would aid in future recovery of the corner.**

**LEGEND**

- iron pipe fnd
  - ⊗ 3/4" x 30" rebar set unless noted otherwise
- Bearings are Langlade County grid bearings.



Index No. J1 33-09



O = corner perpetuated  
The Southeast corner corner of Section 12, T. 33 N., R. 8 E.,

I, David E. Tlusty, Registered Land Surveyor, as Langlade County Surveyor, certify that the corner location on this record was determined by me and that this U.S. Public Land Survey Monument Record is correct to the best of my knowledge and belief.