

CERTIFIED LAND CORNER RESTORATION

Index No. J-1

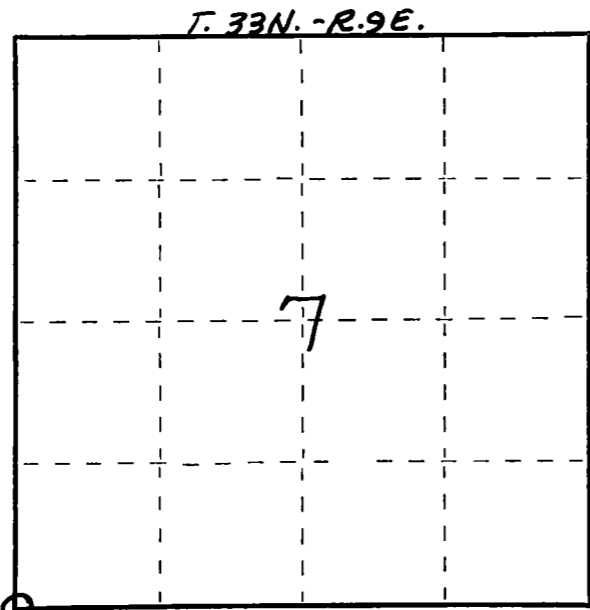
State of Wisconsin }  
 County of LANGLADE } ss.

I WILLIAM F. KELLY, do hereby certify that on the 25<sup>TH</sup> day of NOVEMBER, 1975, I found evidence of the SECTION corner of SECTIONS 12, 7, 13, & 18 Township 33, North, Range 8E & 9E, Fourth Principal Meridian, as described hereon; and that from this evidence I established a new monument and accessories as described hereon to perpetuate the original location of this corner.

Resident witnesses:

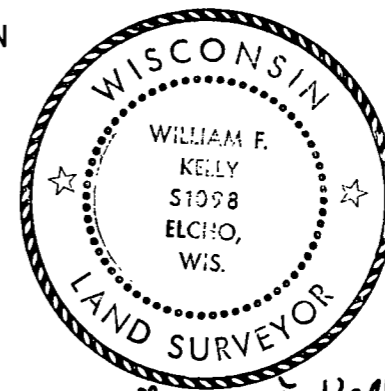
A. SCHAUFELBERGER

FORM 985 H. C. MILLER CO., MILWAUKEE



○ = Corner monument restored.

History of original corner establishment:

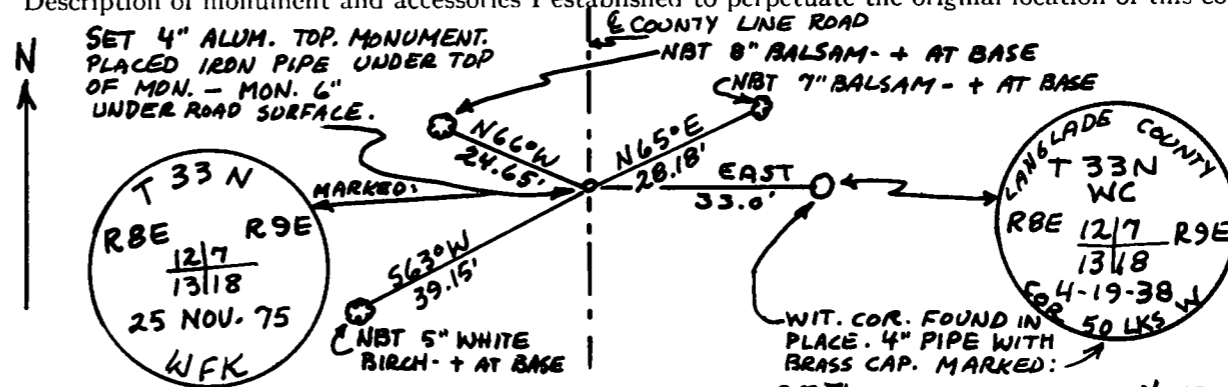


*William F. Kelly*

Description of corner evidence found:

**RESIDENT WITNESS IDENTIFIED LOCATION OF WITNESS CORNER SET IN APRIL 1938. STONE IN ROAD FOUND 3.5' UNDER SURFACE.**

Description of monument and accessories I established to perpetuate the original location of this corner.



Dated at ELCHO, Wis., this 25<sup>TH</sup> day of NOVEMBER, 1975.

Signature William F. Kelly Title REGISTERED LAND SURVEYOR Registration No. 51098  
 (County Surveyor, Registered Land Surveyor, or other duly authorized official)

Office of Register of Deeds, County of \_\_\_\_\_, I hereby certify that the within instrument was filed in this office for record on the \_\_\_\_\_ day of \_\_\_\_\_, 19\_\_\_\_ at \_\_\_\_\_ o'clock \_\_\_\_\_ M.

(Register of Deeds)

By \_\_\_\_\_ Deputy