

LANGLADE COUNTY U.S. PUBLIC LAND CORNER RESTORATION

The Southeast corner of Section 1, T. 33 N., R. 8 E., Lincoln County, WI.
The Southwest corner of Section 6, T. 33 N., R. 9 E., Langlade County, WI.

Corner was: (check all that apply)

4330801 0000

- Restored through acceptance of an obliterated evidence location.
- Restored through acceptance of a found perpetuated location.
- Determined to be lost and re-established through proportionate methods.
- Show bearings and distances to PLSS corners used for proportioning, and show original distances).
- Restored/recovered/re-established in a location that differs from a previously established position.
- (Show difference in plan view below).
- Check here if additional information is shown on the reverse side of this form.

Describe record evidence, recovered physical evidence, occupational evidence, testimonial evidence and all other evidence considered in the recovery/restoration of the corner.

The original corner was established in 1851 by J. M. Marsh. Original bearing trees: sugar, 8", S56E, 48 lks., sugar, 8", S70W, 12 lks., birch, 16", N70W, 16 lks, and a birch, 8", N78E, 22 lks. 1938 resurvey notes of part of this township by Darwin Hintz, show "old hemlock stp, NE and new maple, 8", S78E, 45 lks." Another note with Hintz notes says this corner is a "Lincoln County stone". In 1975, former surveyor Kelly "located witness corner identified by resident witness. Original stone corner removed during road work according to resident witness. Exc. road and set new monument at corner location from witness corner". On 11/01/2016, I found aluminum monument, 1.2' below road surface. Top of monument is broken off. Accepted monument as found as the best evidence of the corner and perpetuated said location as shown below.

Physical description of the monument set:

I found existing aluminum monument, down 1.2' in road. Top is broken off; accepted monument location 'as found'.

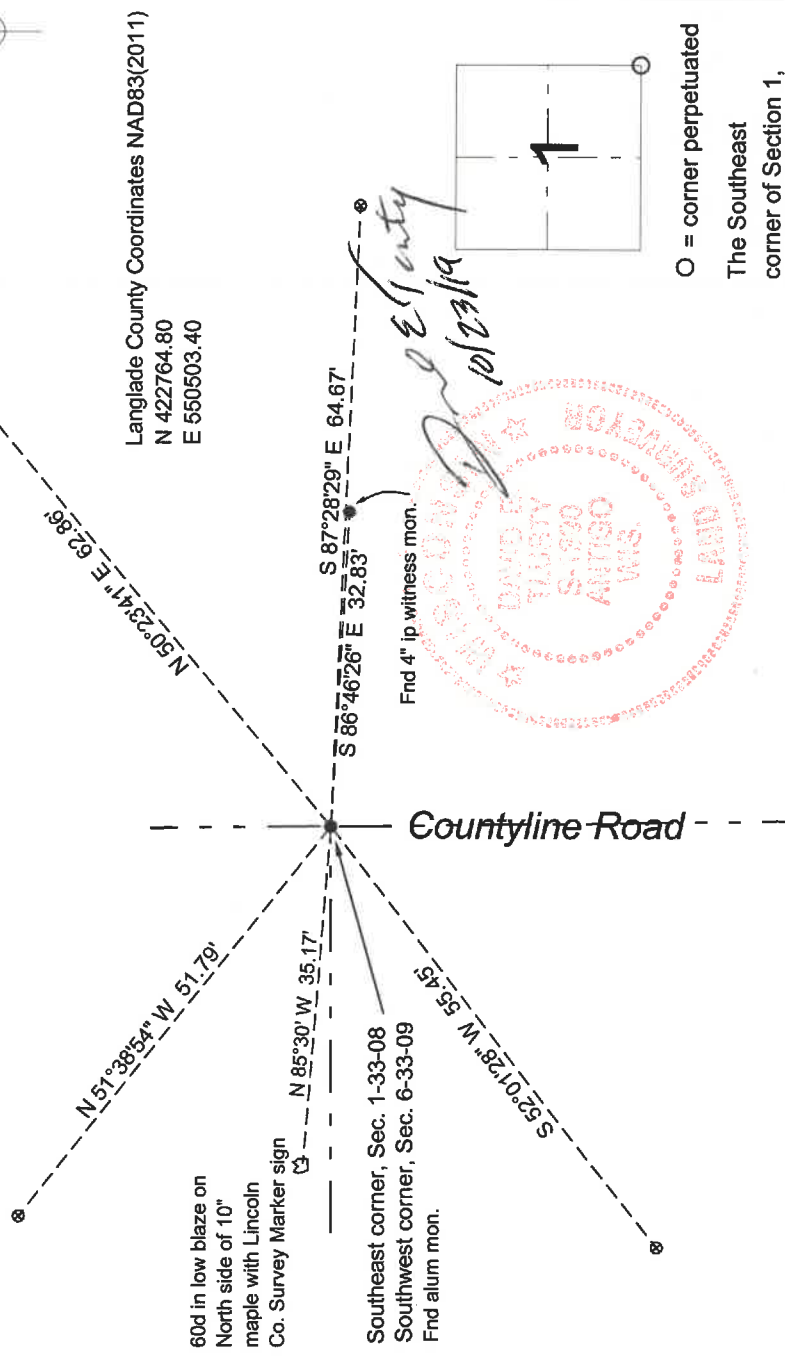
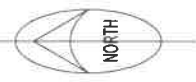
Describe the accessories used to perpetuate the corner. Include a plan view drawing and accessories found/set. Describe measuring point on bearing trees. Show any topographic features that would aid in future recovery of the corner.

LEGEND

- iron pipe fnd
- ⊗ 3/4" x 30" rebar set

Bearings are Langlade County grid bearings.

Field book: FB24-34



Index No. E1 33-09

O = corner perpetuated
The Southeast corner of Section 1, T. 33 N., R. 8 E., Langlade County, WI

I, David E. Tuetz, Registered Land Surveyor, as Langlade County Surveyor, certify that the corner location on this record was determined by me and that this U.S. Public Land Survey Monument Record is correct to the best of my knowledge and belief.