

CERTIFIED LAND CORNER RESTORATION

Index No. 2-23

32-14

State of Wisconsin }  
County of LANGLADE } ss.

I, WILLIAM F. KELLY, do hereby certify that on the 14<sup>th</sup> day of MARCH, 1983, I found evidence of the N. 1/4 corner of SECTION 1 Township 31, North, Range 14 EAST, Fourth Principal Meridian, as described hereon; and that from this evidence I established a new monument and accessories as described hereon to perpetuate the original location of this corner.

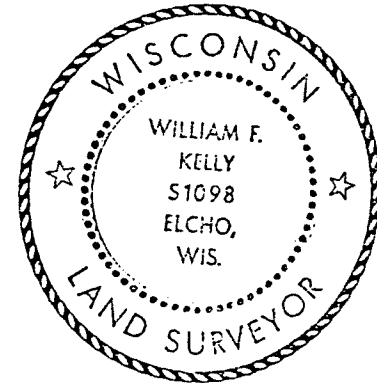
Resident witnesses:

.....  
.....  
.....

History of original corner establishment:  
ORIGINAL CORNER ESTABLISHED BY  
ARTEMAS CURTIS, DEP. SURVEYOR, IN 1857.

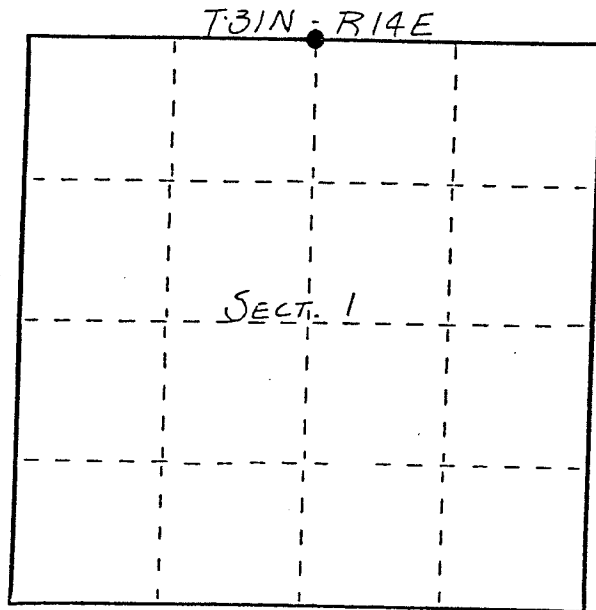
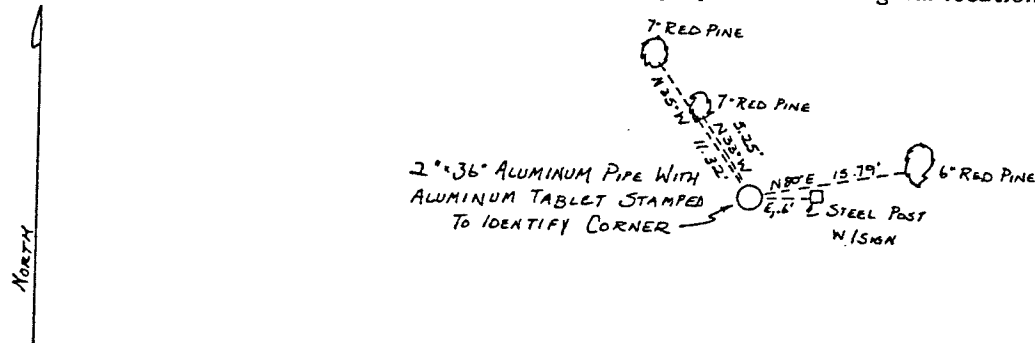
Description of corner evidence found:

REPLACED IRON BED RAIL OF UNKNOWN ORIGIN WHICH AGREES WITHIN REASON OF PROPORTIONED LOCATION OF CORNER.  
SET 2"x36" ALUMINUM MONUMENT.  
Work Done By JOHN FISHER  
IN OCT. 1983



*William F. Kelly*

Description of monument and accessories I established to perpetuate the original location of this corner.



○ = Corner monument restored.

Dated at ELCHO, Wis., this 14<sup>th</sup> day of MARCH, 1983.

Signature William F. Kelly, Title COUNTY SURVEYOR, Registration No. 1098  
(County Surveyor, Registered Land Surveyor, or other duly authorized official)

Office of Register of Deeds, County of....., I hereby certify that the within instrument was filed in this office for record on the.....day of....., 19..... at.....o'clock..... M.

(Register of Deeds)

By.....Deputy