

LANGLADE COUNTY U.S. PUBLIC LAND CORNER RESTORATION

The East Quarter corner of Section 30, T. 32 N., R. 14 E., Langlade County, WI.

43214302000

Corner was: (check all that apply)

- Restored through acceptance of an obliterated evidence location.
- Restored through acceptance of a found perpetuated location.
- Determined to be lost and re-established through proportionate methods.
Show bearings and distances to PLSS corners used for proportioning, and show original distances).
- Restored/recovered/re-established in a location that differs from a previously established position.
(Show difference in plan view below).
- Check here if addition information is shown on the reverse side of this form.

Describe record evidence, recovered physical evidence, occupational evidence, testimonial evidence and all other evidence considered in the recovery/restoration of the corner.

The original corner was established in 1857 by Alfred Millard. Original bearing trees: sugar, 12", N06°W, 39 links and a hemlock, S35°E, 8 links. In 1988, former surveyor Kelly: "Located exist. bearing trees and location tags. Set corner from information on location tags. Equip had knocked over pipe." He measured to 4 bearing trees and set a 3" alum. mon. 04/20/07 D. Tlusty found Kellys aluminum monument lying on ground, obviously run over by a bulldozer. There being no other record evidence, I accept the location of the corner monumented by Kelly as the best evidence. I re-set the corner from Kellys maple (north) and basswood NE. It appears he slope measured the maple (south) and hemlock to the SE which are both up the side of a steep hill. I set the monument described below and marked new BT's as shown.

Physical description of the monument set:

I set a 1" x 30" iron pipe with aluminum cap, top of which is 0.5' below ground in the north edge of the woods road.

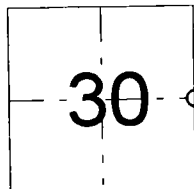
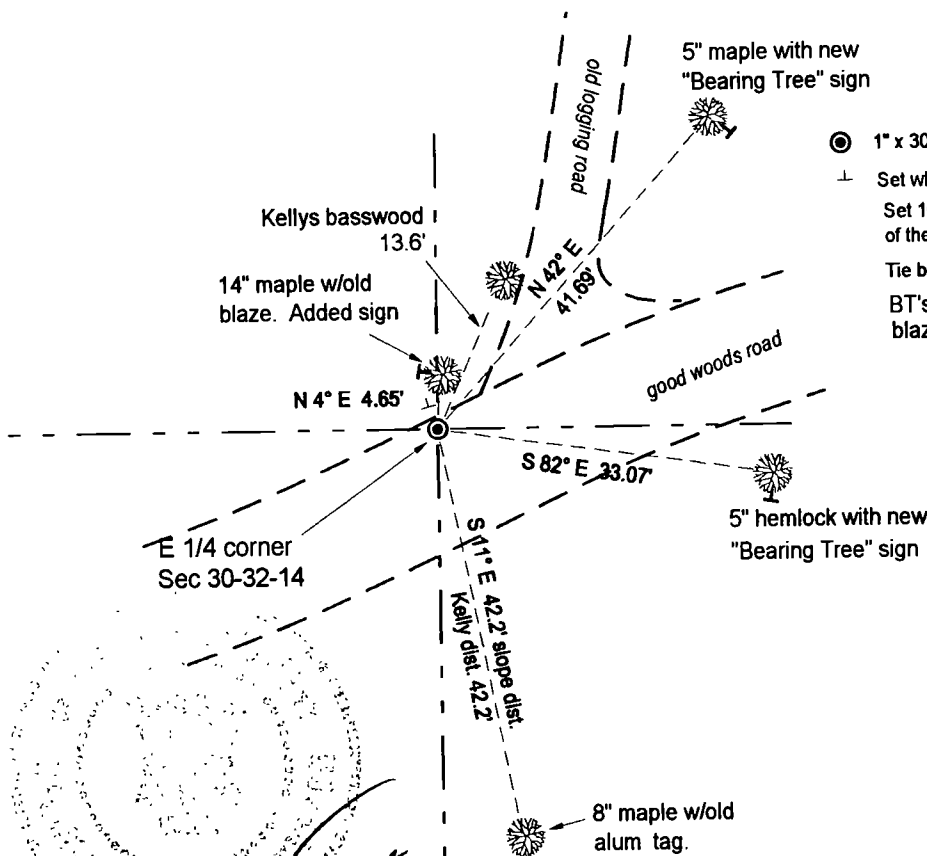
Describe the accessories used to perpetuate the corner. Include a plan view drawing and accessories found/set. Describe measuring point on bearing trees. Show any topographic features that would aid in future recovery of the corner.

Field book FB21-12



LEGEND

- ⊙ 1" x 30" iron pipe with alum. cap set.
- ⊥ Set white vinyl sign post 2' north of the corner monument.
Set 10" sq. pink granite stone 1' north of the corner monument.
- Tie bearings magnetic with hand compass.
- BT's measured to alum. nail in low blaze on side of tree, unless noted.



○ = corner perpetuated
The East Quarter corner of Section 30, T. 32 N., R. 14 E., Langlade County, WI

David E. Tlusty
5/2/07

I, David E. Tlusty, Registered Land Surveyor, as Langlade County Surveyor, certify that the corner location on this record was determined by me and that this U S Public Land Survey Monument Record is correct to the best of my knowledge and belief.

Index No. TS 32-14