

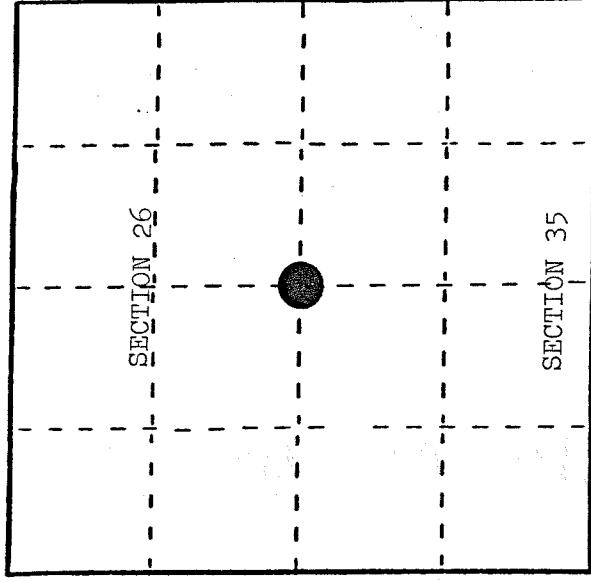
U. S. PUBLIC LAND SURVEY MONUMENT RECORD

I N S T R U C T I O N S :

This record shall show the location of the corner and shall include all of the following nine elements (a through i).

- (a) Identify the corner by reference to the U.S. public land survey system.
- = Corner monument restored.

Quarter corner common to Sections 26 and 35, T.32N., R.14E., Langlade County, Wisconsin.



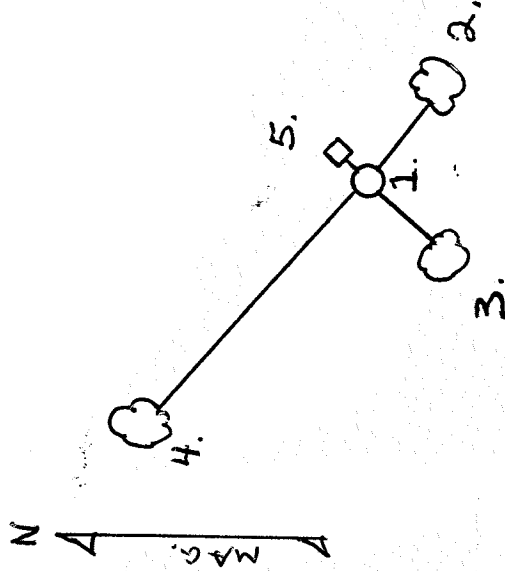
T 32 N R 14 E

- (b) Describe any record evidence, monument evidence, occupational evidence, testimonial evidence or any other material evidence you considered, and whether the monument was found or placed.

In 1857, Alfred Millard set wood post for corner and made the following BTs: Hemlock, 30", S.40°W., 35 links; Sugar, 10", N.20°E., 29 links.

In 1988, Alan Harrison searched for corner and could find no evidence of original or a perpetuated corner location. Monumented corner at proportional position.

- (c) In the plan view drawing below, provide reference ties to at least 4 witness monuments, or, if the location is within a municipality, to at least 2 witness monuments. (Witness monuments shall be made of concrete, natural stone, iron or other equally durable material.) Describe witness monuments.



1. 2½" x 36" aluminum monument stamped to identify the corner.
2. Sugar, 5", S.55°E., 6.22 feet
3. Sugar, 9", S.41°W., 5.15 feet
4. Sugar, 5", N.49°W., 49.12 feet
5. Steel Sign Post, 6', Northeast, 0.69 feet.

(e) Describe any material discrepancy between the location of the corner as restored or reestablished and the location of that corner as previously restored or reestablished by distance and direction. Show the discrepancy on the plan view drawing under (d), above. Show the distances between the corner as previously restored or reestablished and (1) the corner as restored or reestablished, and (2) to at least 2 of the witness monuments shown on the drawing in (d), above.

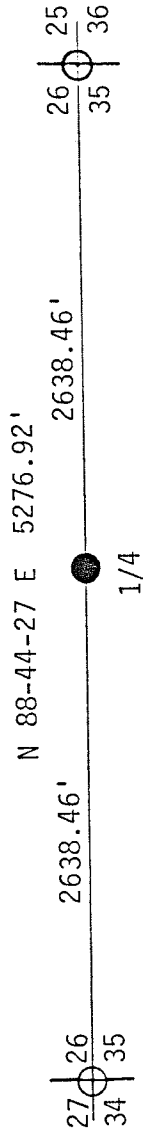
None.

(f) Was the corner restored through acceptance of (1) an obliterated evidence location, or, (2) a found perpetuated location?

No.

(g&h) Was the corner reestablished through lost corner proportionate methods? If so, show the method, including the directions and distances to other public land survey corners used as evidence or used for proportioning in determining the corner location?

Yes.



Alan D. Harrison

(1) Alan D. Harrison certify that the corner location shown (type or print name) on this record was determined by me or under my direction and control and that this U.S. Public Land Survey Monument Record is correct and complete to the best of my knowledge and belief.

Alan D. Harrison
Signature

6/27/88
Date

Frank W. Kelly
District Ranger

