

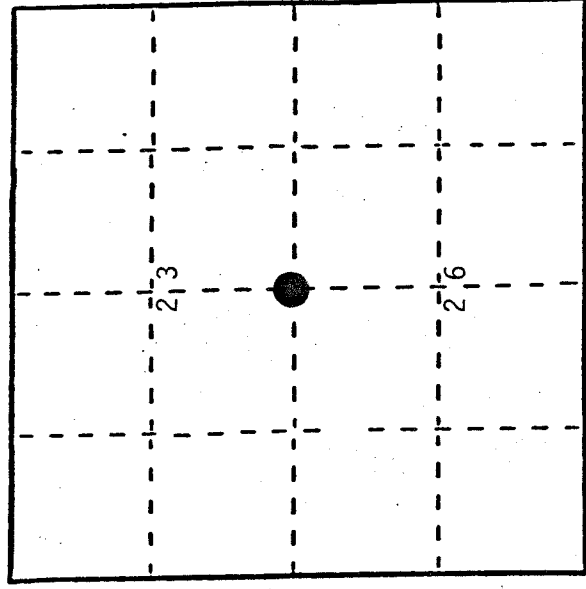
U. S. PUBLIC LAND SURVEY MONUMENT RECORD

I N S T R U C T I O N S :

This record shall show the location of the corner and shall include all of the following nine elements (a through i).

- (a) Identify the corner by reference to the U.S. public land survey system.
- = Corner monument restored.

East Sixteenth Corner to Sections 23-26, T.32N., R14E., Langlade County, Wisconsin.



T 32 N R 14 E

- (b) Describe any record evidence, monument evidence, occupational evidence, testimonial evidence or any other material evidence you considered, and whether the monument was found or placed.

Date unknown and person unknown set a scribed and squared cedar post for the sixteenth corner.

In 1971, R. Hallisy (RLS) found and accepted the post as the SE corner of Government Lot 1.

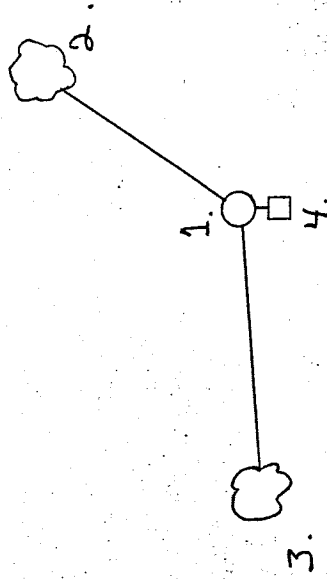
In 1981, W. Dobbratz (RLS) found and accepted the post as the NE corner of Government Lot 3.

In 1988, Alan Harrison (RLS) found the post and found it to fit the section line and accepted it thru past usage and calls from NW section corner of section 26. Replaced wood post with a 2½"x 120" aluminum monument.

- (c) In the plan view drawing below, provide reference ties to at least 4 witness monuments, or, if the location is within a municipality, to at least 2 witness monuments. (Witness monuments shall be made of concrete, natural stone, iron or other equally durable material.) Describe witness monuments.

- (d) Show a plan view drawing depicting the relevant monuments and reference ties which is sufficient in detail to enable accurate relocation of the corner monument if the corner monument is disturbed. Indicate north.

1. 2½"x 120" aluminum monument with tablet stamped to identify the corner.
2. Tamarack, 8", N.27E., 29.07 feet
3. Tamarack, 9", S.83W., 36.58 feet
4. Steel Sign Post, South, 0.71 feet



(e) Describe any material discrepancy between the location of the corner as restored or reestablished and the location of that corner as previously restored or reestablished by distance and direction. Show the discrepancy on the plan view drawing under (d), above. Show the distances between the corner as previously restored or reestablished and (1) the corner as restored or reestablished, and (2) to at least 2 of the witness monuments shown on the drawing in (d), above.

None.

(f) Was the corner restored through acceptance of (1) an obliterated evidence location, or, (2) a found perpetuated location?

a found perpetuated location.

(g) Was the corner reestablished through lost corner proportionate methods? If so, show the method, including the directions and distances to other public land survey corners used as evidence or used for proportioning in determining the corner location?

No.

LOCATION VERIFIED *William J. Kelly*
5-6-89

(1) Alan D. Harrison

(Type or print name) certify that the corner location shown on this record was determined by me or under my direction and control and that this U.S. Public Land Survey Monument Record is correct and complete to the best of my knowledge and belief.

Alan D. Harrison
Signature

4/27/89
Date

Certificate ready for filing:

Alan D. Harrison
District Ranger

