

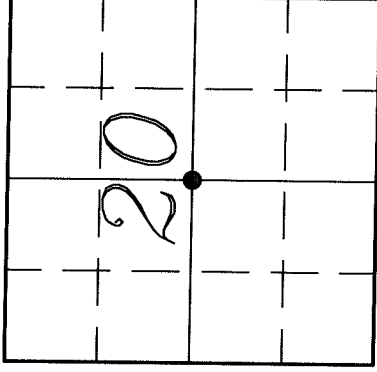
U.S. PUBLIC LAND SURVEY MONUMENT RECORD

43214 20 2020

HISTORY OF ORIGINAL CORNER ESTABLISHMENT AND SUBSEQUENT RESTORATION AND DESCRIPTION OF ANY RECORD, MONUMENT OCCUPATIONAL, TESTIMONIAL OR OTHER EVIDENCE CONSIDERED:

THIS C 1/4 CORNER WAS NOT ESTABLISHED IN THE ORIGINAL GOVERNMENT SURVEY. ON 6/30/1998, GERRY BAHAR AND DON BUZA, AFTER TRAVERSING SECTION 20-32-14, ESTABLISHED THIS LOCATION FOR THE CENTER 1/4 CORNER AT THE INTERSECTION OF THE NORTH-SOUTH AND EAST-WEST 1/4 LINES. A 1.25" IRON PIPE IN A ROCK PILE, PREVIOUSLY SET AND USED AS THE C1/4 BY AN EARLIER SURVEYOR, WAS FOUND AND LOCATED APPROXIMATELY 40' TO THE SOUTH AS SHOWN ON THE DRAWING BELOW.

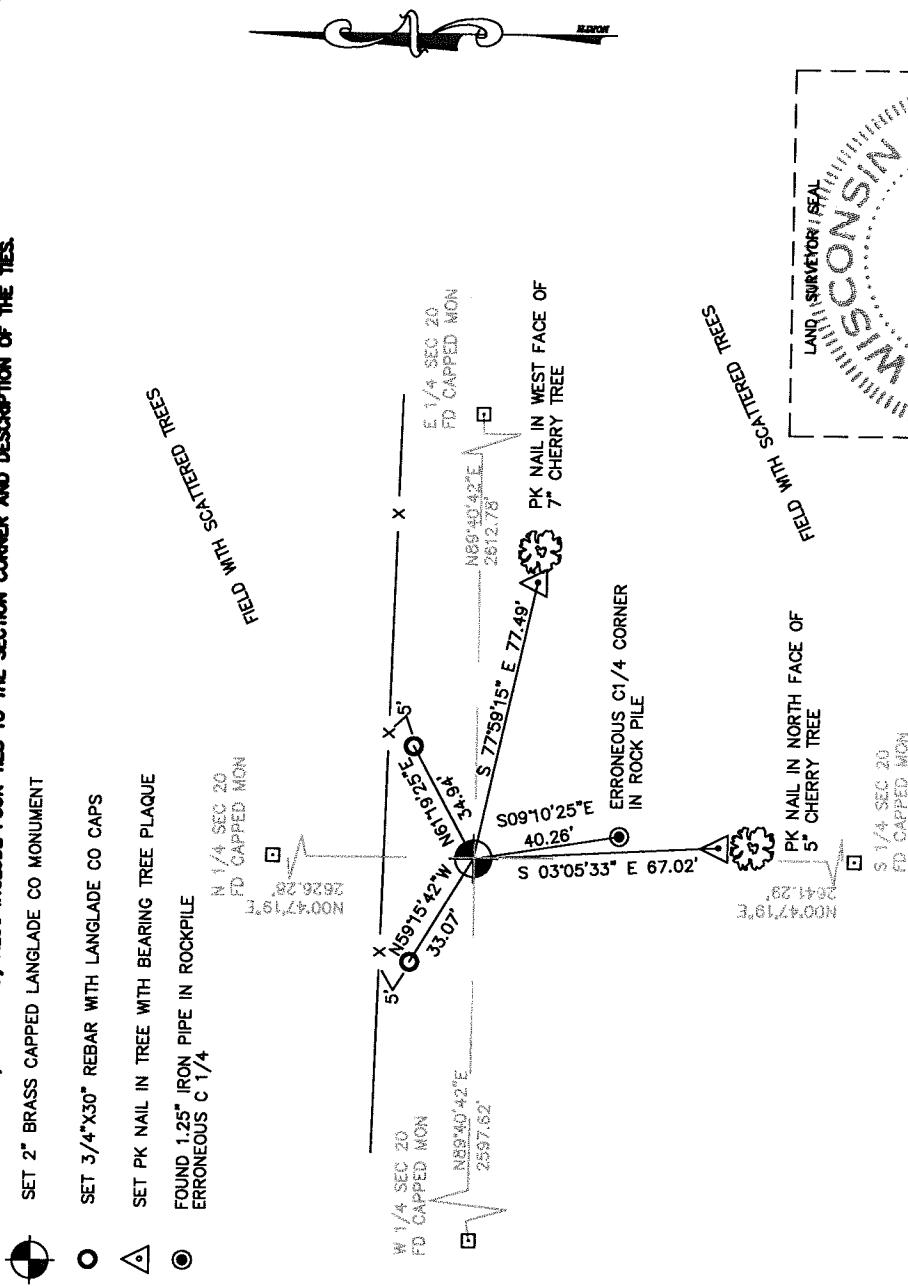
● = LOCATION OF CORNER



SECTION 20
 TOWNSHIP 32 NORTH, RANGE 14 EAST
 TOWN OF WOLF RIVER
 LANGLADE COUNTY, WISCONSIN

- CORNER WAS: (CHECK ALL THAT APPLY)
- RESTORED THROUGH ACCEPTANCE OF AN OBLITERATED EVIDENCE LOCATION
 - RESTORED THROUGH ACCEPTANCE OF A FOUND PERPETUATED LOCATION
 - CONSIDERED A LOST CORNER AND REESTABLISHED THROUGH LOST CORNER PROPORTIONATE METHODS (INCLUDE A PLAN VIEW DRAWING SHOWING DISTANCES AND DIRECTIONS TO OTHER PUBLIC LAND SURVEY CORNERS USED FOR PROPORTIONING AND DETERMINING THE CORNER LOCATION)
 - RESTORED OR REESTABLISHED IN A LOCATION THAT DIFFERS FROM A PREVIOUS RESTORATION OR REESTABLISHMENT (INCLUDE A PLAN VIEW DRAWING AND INDICATE WHAT WAS SET AND/OR FOUND)
 - CHECK IF THERE IS ADDITIONAL INFORMATION ON BACK

DESCRIBE THE MONUMENT AND ACCESSORIES USED TO PERPETUATE THE LOCATION OF THE CORNER. (INCLUDE A PLAN VIEW DRAWING AND INDICATE WHAT WAS SET AND/OR FOUND) ALSO INCLUDE FOUR TIES TO THE SECTION CORNER AND DESCRIPTION OF THE TIES.

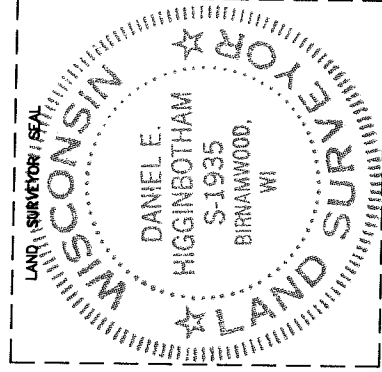


DANIEL E. HIGGINBOTHAM

(Type or print name) CERTIFY THAT THE CORNER LOCATION SHOWN ON THIS RECORD WAS DETERMINED BY ME OR UNDER MY DIRECTION AND CONTROL AND THAT THIS U.S. PUBLIC LAND SURVEY MONUMENT RECORD IS CORRECT AND COMPLETE TO THE BEST OF MY KNOWLEDGE AND BELIEF.

[Signature]
 SIGNATURE

4/18/06
 DATE



P7 32-14
 INDEX NO.