

CERTIFIED LAND CORNER RESTORATION

Index No. P-9

State of Wisconsin }
County of LANGLADE } ss.

I WILLIAM F. KELLY, do hereby certify that on the 2ND day of OCT., 1981, I found evidence of the N. 1/4 corner of SEC. 21 Township 32, North, Range 14 EAST, Fourth Principal Meridian, as described hereon; and that from this evidence I established a new monument and accessories as described hereon to perpetuate the original location of this corner.

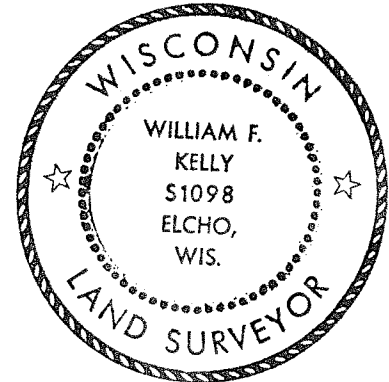
Resident witnesses:

History of original corner establishment:

ORIGINAL CORNER ESTABLISHED BY
ALFRED MILLARD IN SEPT., 1857

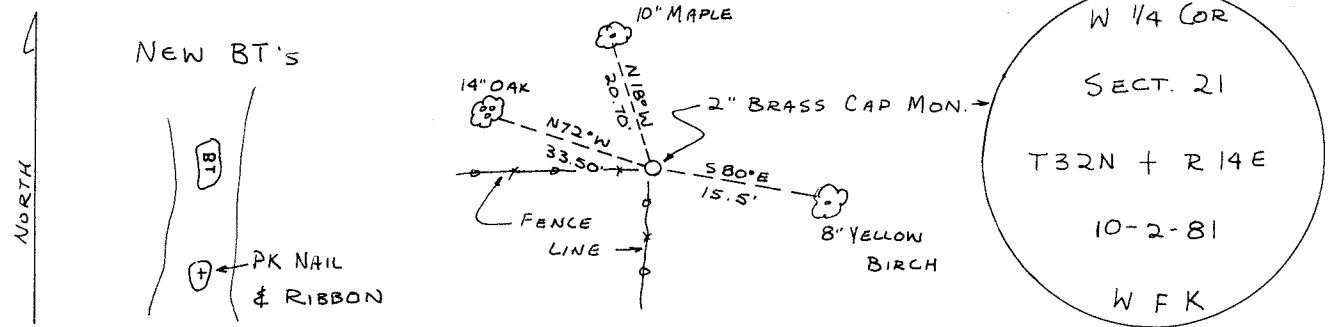
Description of corner evidence found:

FOUND 4" x 4" WOOD POST WITH
LOCATION TAG.
REPLACED WITH 2" x 42" BLACK
IRON PIPE WITH BRASS CAP
MONUMENT.



William F. Kelly

Description of monument and accessories I established to perpetuate the original location of this corner.



Dated at ELCHO, Wis., this 2ND day of OCT., 1981

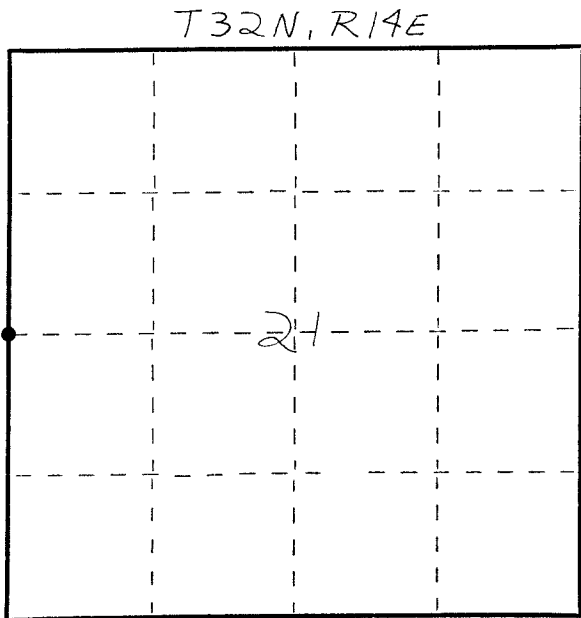
Signature William F. Kelly Title COUNTY SURVEYOR Registration No. 1098
(County Surveyor, Registered Land Surveyor, or other duly authorized official)

Office of Register of Deeds, County of _____, I hereby certify that the within instrument was filed in this office for record on the _____ day of _____, 19____ at _____ o'clock _____ M.

(Register of Deeds)

By _____ Deputy

FORM 983 H. C. MILLER CO., MILWAUKEE



○ = Corner monument restored.