

4 32 14 17 20 00

U.S. PUBLIC LAND SURVEY MONUMENT RECORD

(Prepared and as required by S. A-E 7.08 WI Administrative Code)
 The East 1/4 corner of Section 17, T. 32N., R. 14 E., Langlade County, WI

Corner was: (check all that apply)

- Restored through acceptance of an obliterated evidence location.
- Restored through acceptance of a found perpetuated location.**
- Determined to be lost and reestablished through proportionate methods. (Show bearings and distances to PLSS corners used for proportioning)
- Restored/recovered/reestablished in a location that differs from a previously established position. (Show difference in plan view below.)**
- Check here if additional information is shown on the reverse side of this form.

Describe record evidence, recovered physical evidence, occupational evidence, testimonial evidence and all other evidence considered in the recovery/restoration of corner.

September 25, 1857: A. Millard set ¼ Section post Bt's: Yellow Birch 12", N 68° W, 37 links; Yellow Birch 14", S 45° E, 27 links.

1975: RLS Wayne Dobbratz "Replaced wood post at ¼ corner with a 2" x 30" iron pipe" as shown on the Sawyer Heights Subdivision Plat. It does not appear he marked bearing trees or filed a monument record.

1980: Dobbratz showed corner as "Found 1 ½" iron pipe" on survey record No. 20074 filed with the Langlade County Land Records.

1987: RLS Alan Harrison found wood post with a metal tag lying on the ground next to its post hole. Found smaller post hole "next to post hole" - set new monument in smaller post hole and retied, Red Maple 6", N 89° E, 30.42'; Red Maple 8", S 45° E, 61.13'; White Birch 6", N 38° W, 35.52'.

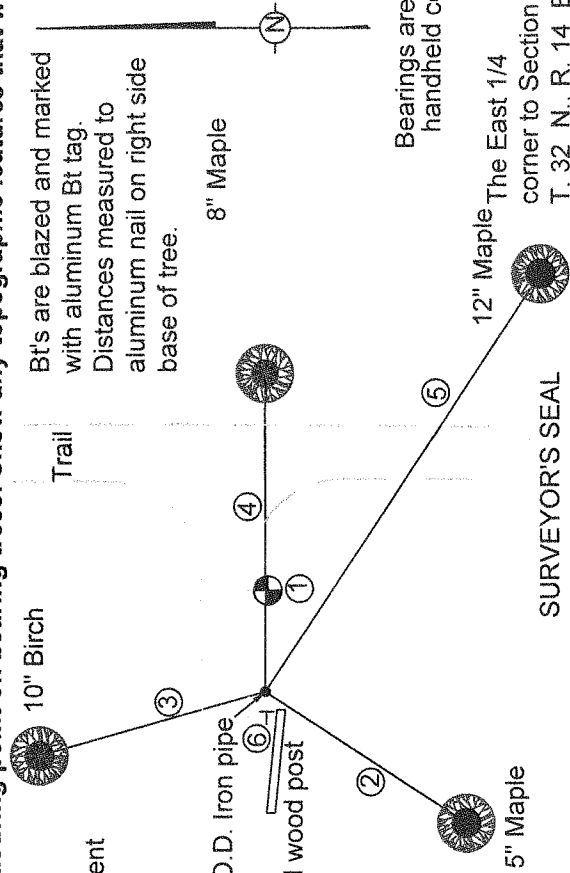
September, 2005: I found Harrison's monument and Bt's. I also found Dobbratz's iron pipe at the bottom of a wood post with a metal tag lying on the ground. The found pipe is in line with the Westerly pipes of lots 11 - 13 of the Sawyer Heights Subdivision Plat. I accept the found Iron pipe the best evidence of the corner.

Physical description of the monument set:

Left iron pipe in place and tied as follows.

Describe the accessories used to perpetuate the location of the corner. Include a plan view drawing and indicate accessories found/set. Describe measuring point on bearing trees. Show any topographic features that would aid in future recovery of the corner.

- ① Harrison's aluminum capped monument
N86° 04' 26"E 7.28'
- ② S 34° W 24.54'
- ③ N 32° W 31.77'
- ④ N 89° E 37.52'
- ⑤ S 54° E 67.15'
- ⑥ White plastic T post, 0.5' West



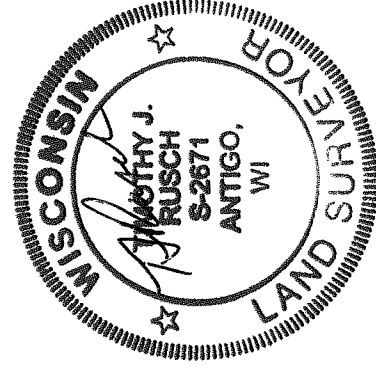
Bearings are magnetic
handheld compass

NOT TO SCALE

DRAFTED BY:
PAUL MATTMILLER

I, Timothy J. Rusch RLS 2671, certify that the corner location shown on this record was determined by me or under my direction and control and that this U.S. Public Land Survey Record is correct and complete to the best of my knowledge and belief.

Timothy J. Rusch
 Signature 12/7/2005
 Date



INDEX NO. L 9 32-14

