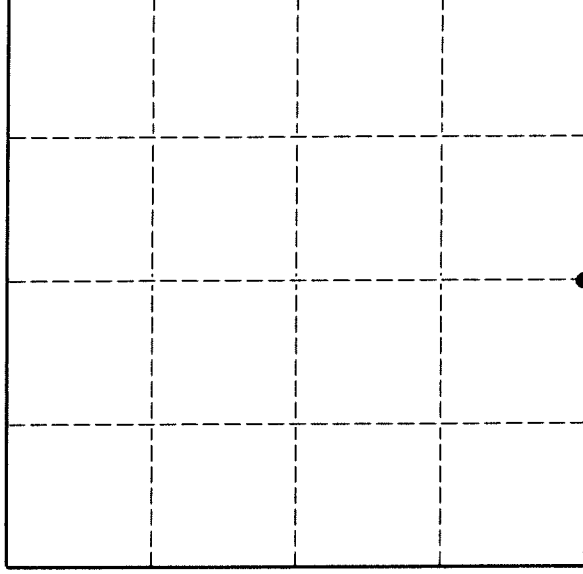


# U. S. PUBLIC LAND SURVEY MONUMENT RECORD

**INSTRUCTIONS:**

This record shall show the location of the corner and shall include all of the following nine elements (a through i).

- (a) Identify the corner by reference to the U.S. public land survey system.
- = Corner monument restored.

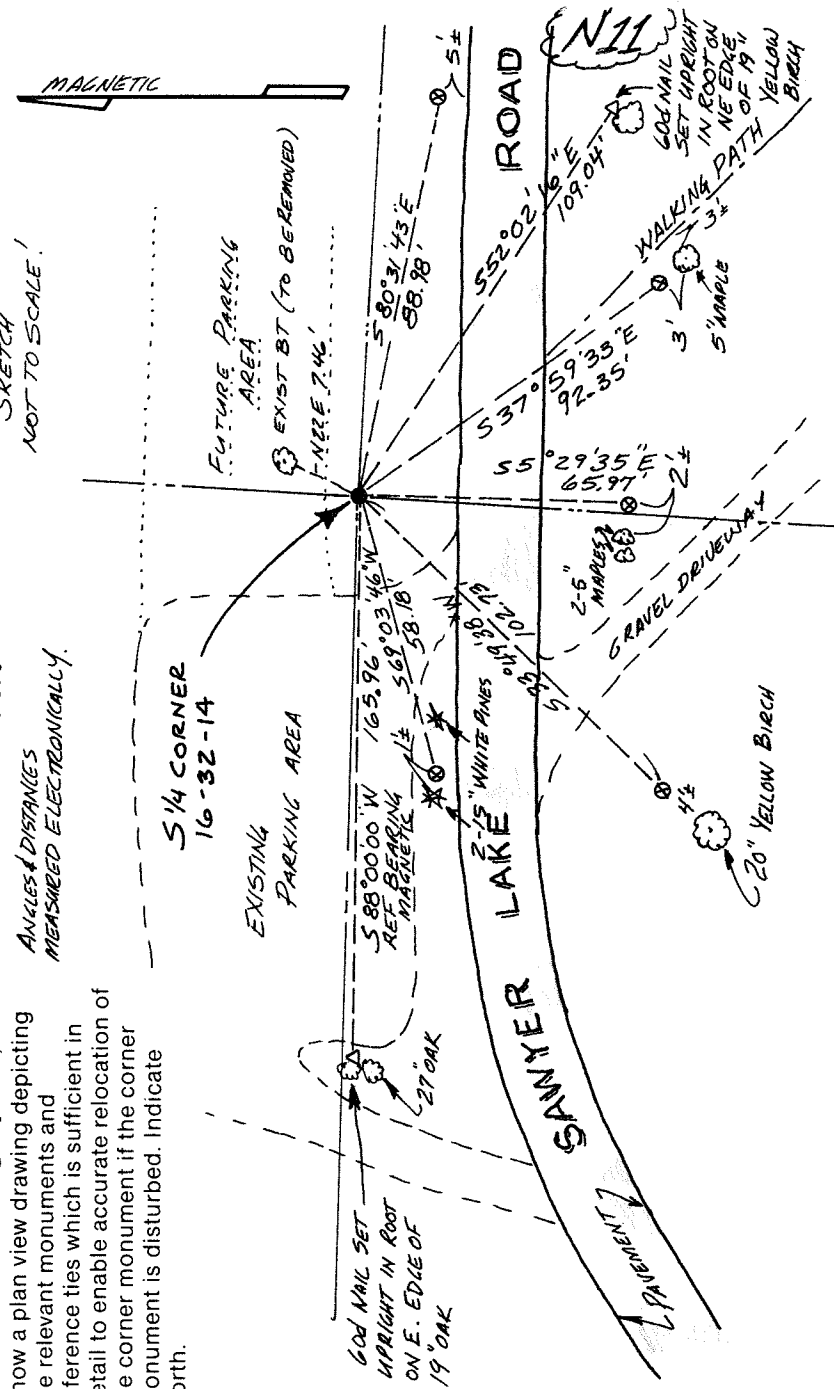


*SEC 16, T32N, R 14E*

The South Quarter corner of Section 16, Township 32 North, Range 14 East, Langlade County, Wisconsin.

- (b) Describe any record evidence, monument evidence, occupational evidence, testimonial evidence or any other material evidence you considered, and whether the monument was found or placed. The original corner was established by Alfred Millard in 1857. OBT's: hemlock, 14", S40W, 17.82'; hemlock, 20", N59E, 18.48'. In 1936, John Repta, CCC, found post, no bearing trees. Place a metal poster on a cedar post, 6", North side of T3212, North, 0.21 chains (13.86 feet). In 1983, former surveyor Kelly "replaced existing 1" x 30" iron pipe with a 3" x 42" aluminum monument..."
- (c) In 1989, Al Harrison found Kellys' monument and marked two bearing trees. 05/17/95, David E. Tlusty, found Kellys' aluminum monument in good condition. Harrison's south BT has been cut off 6' above ground. The north BT will be removed in the near future for a parking lot expansion. I added reference monuments as shown below to perpetuate the location of the existing aluminum monument set by Kelly. I made no attempt at this time to verify this corner set by Kelly. In the plan view drawing below, provide reference ties to at least 4 witness monuments; or, if the location is within a municipality, to at least 2 witness monuments. (Witness monuments shall be made of concrete, natural stone, iron or other equally durable material.) Describe witness monuments.
  - ⊗ = 3/4" x 30" re-bar set just below ground level (with red plastic cap).
  - Set white vinyl sign post 0.9' north of monument.
  - Found steel sign post, 0.5' south of monument.
- (d) Show a plan view drawing depicting the relevant monuments and reference ties which is sufficient in detail to enable accurate relocation of the corner monument if the corner monument is disturbed. Indicate north.

SKETCH NOT TO SCALE!



ANGLES & DISTANCES MEASURED ELECTRONICALLY.

FB 5-158

Describe any material discrepancy between the location of the corner as restored or reestablished and the location of that corner as previously restored or reestablished by distance and direction. Show the discrepancy on the plan view drawing under (d), above. Show the distances between the corner as previously restored or reestablished and (1) the corner as restored or reestablished, and (2) to at least 2 of the witness monuments shown on the drawing in (d), above.

(f) Was the corner restored through acceptance of (1) an obliterated evidence location, or, (2) a found perpetuated location.?

*A FOUND PERPETUATED LOCATION.*

(g & h) Was the corner reestablished through lost corner proportionate methods? If so, show the method, including the directions and distances to other public land survey corners used as evidence or used for proportioning in determining the corner location.

*No*

(i) I, DAVID E. TLUSTY, LANGLADE COUNTY SURVEYOR  
(type or print name)

certify that the corner location shown on this record was determined by me or under my direction and control and that this U.S. Public Land Survey Monument Record is correct and complete to the best of my knowledge and belief.

*David E. Tlusty*  
Signature

*5/17/95*  
Date

