

CERTIFIED LAND CORNER RESTORATION

Index No. N-13

State of Wisconsin }  
County of LANGLADE } ss.

I WILLIAM F. KELLY, do hereby certify that on the 12<sup>th</sup> day of JANUARY, 19 83, I found evidence of the SE corner of SECT. 16 Township 32, North, Range 14 EAST, Fourth Principal Meridian, as described hereon; and that from this evidence I established a new monument and accessories as described hereon to perpetuate the original location of this corner.

Resident witnesses:

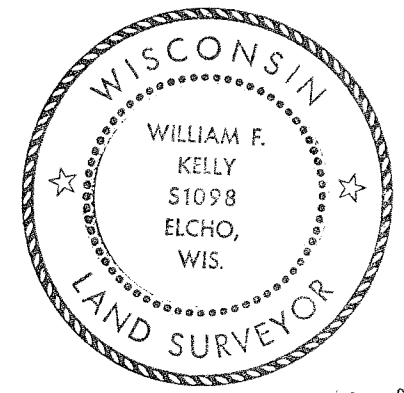
.....  
.....  
.....

History of original corner establishment:  
ORIGINAL CORNER ESTABLISHED BY ALFRED MILLAND IN SEPT., 1857.

Description of corner evidence found:

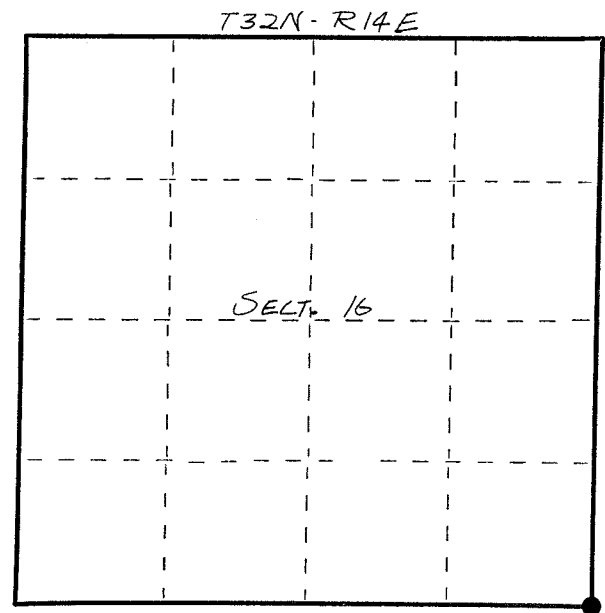
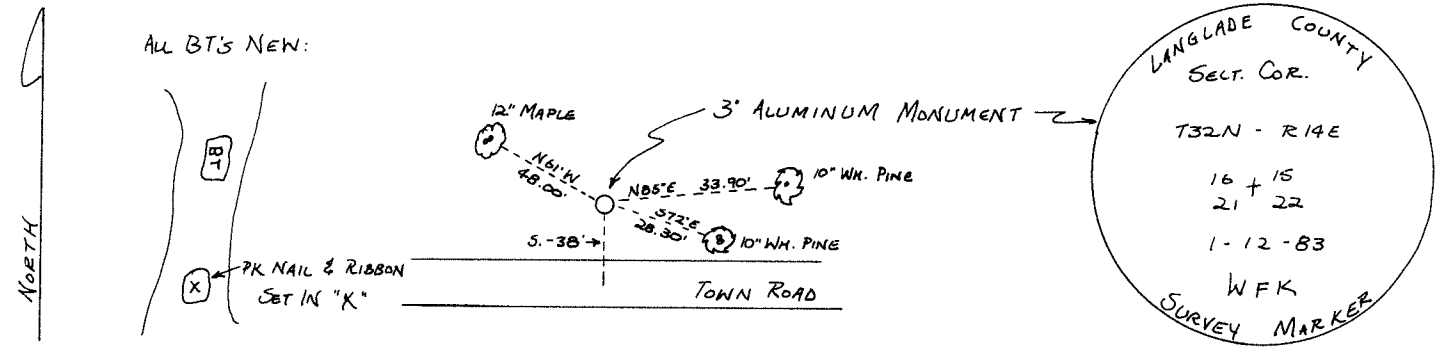
FOUND LOCATION TAG ON ROTTED WOOD POST. TAG DATED 4/5/57 & INITIALED WW & RLE. FOUND ANOTHER UNREADABLE LOCATION TAG IN HOLE OF WOOD POST. SET 3"x42" ALUMINUM MONUMENT IN POST HOLE. 2 R.R. SPIKES ARE INSIDE MONUMENT FOR IRON READING. SET BOTH TAGS ON 3" MAPLE 3' N. OF MON.

6/12/35 - HAROLD J. POWELL, JUNIOR FORESTER, LOCATED 4x4x10 BADLY BURNT POST.



*William F. Kelly*

Description of monument and accessories I established to perpetuate the original location of this corner.



○ = Corner monument restored.

Dated at ELCHO, Wis., this 12<sup>th</sup> day of JANUARY, 19 83

Signature William F. Kelly Title COUNTY SURVEYOR Registration No. 1098  
(County Surveyor, Registered Land Surveyor, or other duly authorized official)

Office of Register of Deeds, County of ....., I hereby certify that the within instrument was filed in this office for record on the ..... day of ....., 19..... at ..... o'clock ..... M.

.....  
(Register of Deeds)

By..... Deputy

FORM 985 H. C. MILLER CO., MILWAUKEE