

4 321413 0000 2017

**U.S. PUBLIC LAND SURVEY MONUMENT RECORD**

Note: This form is intended and designed to fulfill all requirements of Wisconsin Administrative Code, Chapter A-E 7.08 U.S. Public Land Survey Monument Record (3)(a-l).

(a) CORNER LOCATION  
 Cor. of Secs. 13, 18, 19 & 24  
 Township 32 North  
 Range 14 & 15 East of the 4th P.M.  
 Town of Wolf River/Doty  
 County of Langlade/Oconto

WISCORS - Langlade County  
 N: 379,871.93 USft  
 E: 742,137.25 USft  
 Datum: NAD 83(2011)  
 GNSS Method: Static  
 GNSS Control: WISCORS VRS

		SEC. 13	
		T32N R14E	

(b) HISTORY OF ORIGINAL CORNER ESTABLISHMENT

Original Surveyor: Artemas Curtis

Original Accessories:

Date of Survey      Commenced: June, 1857  
 Completed: July, 1857

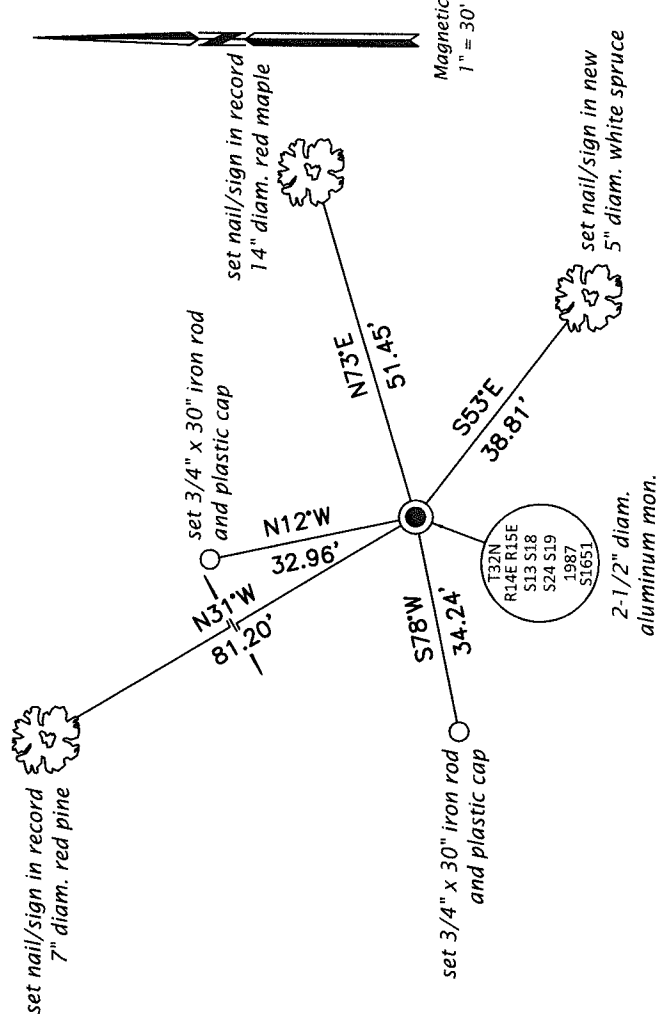
Hemlock 12" S62°W, 41 lks.  
 Y. Birch 14" N77°W, 19 lks.  
 Y. Birch 14" N59°E, 32 lks.  
 W. Pine 36" S35°E, 25 lks.

(b)(f)(g)(h) Description of monument found at this corner and if it was accepted, state all evidence (material, testimonial, occupational, plats, records, other monuments) used as a basis for accepting. If not accepted or if nothing was found, state evidence used as basis for establishing location. If re-established through lost corner proportionate methods, indicate all monuments, distances and directions used to establish. Indicate type of monument and sign post found or set.

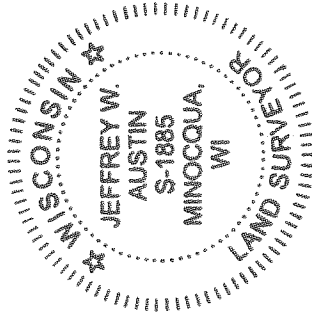
*This is a perpetuation of a previous USPLS Monument Record by Alan D. Harrison, RLS dated February 24, 1987 and filed in the office of the Langlade County Surveyor. A complete history of the corner can be found on the previous monument record. I accept the previous location as a true and faithful perpetuation or reestablishment of the original corner location and further perpetuate it as follows.*

*October 29, 2016: I found and accepted the record monument, a 2-1/2" diam. aluminum pipe with a 3-1/4" diam. aluminum cap projecting 10" above the ground surface. I set a DEEP-1 magnet adjacent to the monument. The record tree at S40E is gone and the tree at S55°W is down. I found or established accessories as shown below. A USFS steel sign post bears East, 1.0 ft. I set a white vinyl sign post bearing South, 1.2 ft.*

(c)(d)(e) Plan view of corner with ties to at least 4 witness monuments. If in disagreement with previously established corner, show the distances between the two corners and also indicate the ties to the disputed.



(i) I, Jeffrey W. Austin, Professional Land Surveyor No. S-1885, hereby certify that the corner location on this record was determined by me or under my direction and control and that this U.S. Public Land Survey Monument Record is correct and complete to the best of my knowledge and belief.



*[Handwritten Signature]*  
 Signature

May 6, 2017  
 Date