

CERTIFIED LAND CORNER RESTORATION

32-14  
Index No. J-9

State of Wisconsin }  
County of Langlade } ss.

History of original corner establishment:

I Raymond J. Hallisy, do hereby certify that on the 3rd day of May, 1969, I found evidence of the Section Corner corner of 8, 9, 16, & 17 Township 32, North, Range 14 E Fourth, Principal Meridian, as described hereon; and that from this evidence I established a new monument and accessories as described hereon to perpetuate the original location of this corner.

Description of corner evidence found:

**Large Cedar Post with Location Poster for Corner.**  
**Set By U.S. Forest Service.**  
**Squared and Scribed Post down.**  
**No Old B.T.s Found.**

Resident witnesses:

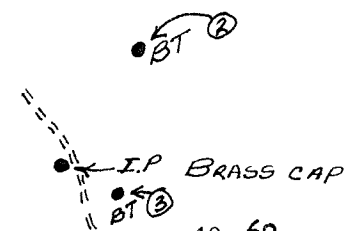
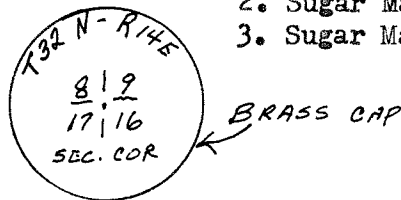
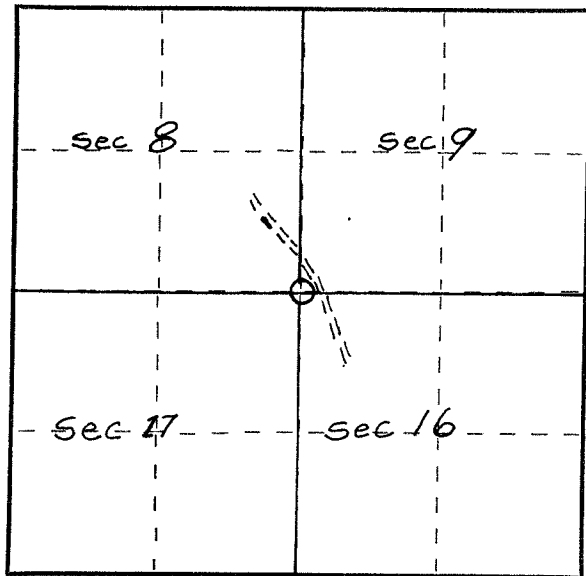
Gerald Kryka

Description of monument and accessories I established to perpetuate the original location of this corner.

Corner: 1 1/2 inch Iron Pipe with 4 " Brass Cap set in Cement.  
Erected Rock Mound.

Brass Cap Marked: Sec. Cor. 8, 9, 16, 17, T32N - R14E

- New B.T.s
- 1. Sugar Maple 7" S80W 35' 2"
  - 2. Sugar Maple 7" N32E 45' 6"
  - 3. Sugar Maple 9" S72E 18' 6"



Dated at Antigo, Wis., this 5th day of May, 1969.

Signature Raymond J. Hallisy Title Reg. Land Surveyor Registration No. S-685  
(County Surveyor, Registered Land Surveyor, or other duly authorized official)

Office of Register of Deeds, County of \_\_\_\_\_, I hereby certify that the within instrument was filed in this office for record on the \_\_\_\_\_ day of \_\_\_\_\_, 19\_\_\_\_ at \_\_\_\_\_ o'clock \_\_\_\_\_ M.

(Register of Deeds)

By \_\_\_\_\_ Deputy

○ = Corner monument restored.