

# LANGLADE COUNTY U.S. PUBLIC LAND CORNER RESTORATION

The East Quarter corner of Section 7, T. 32 N., R. 14 E., Langlade County, WI.

**Corner was: (check all that apply)**

3214072000

- Restored through acceptance of an obliterated evidence location.
- Restored through acceptance of a found perpetuated location.
- Determined to be lost and re-established through proportionate methods.
- Show bearings and distances to PLSS corners used for proportioning, and show original distances).
- Restored/recovered/re-established in a location that differs from a previously established position.
- (Show difference in plan view below).
- Check here if addition information is shown on the reverse side of this form.

**Describe record evidence, recovered physical evidence, occupational evidence, testimonial evidence and all other evidence considered in the recovery/restoration of the corner.**

The original corner was established in 1857 by Alfred Millard. Original bearing trees: hemlock, 34", N30°E, 19 links, and a hemlock, 15", S 60° W, 8 links. In 1917, Malcom Hutchinson found "post. stumps of orig. BT's." He set a buggy axle for the corner and marked a birch, 13", N43°E, 72.5 links.

11/01/00 Dave Tlusty, Tony Kielcheski found Hutchinsons buggy axle.

Distance to center of section is in agreement with Hutchinsons as shown below.

Accepted axle as the best evidence of the original corner location and perpetuated the corner as shown below.

**Physical description of the monument set:**

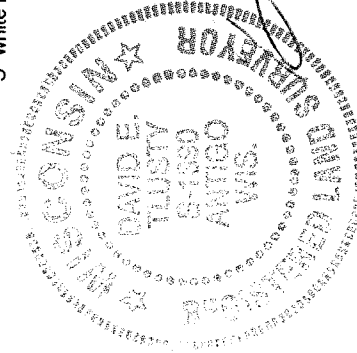
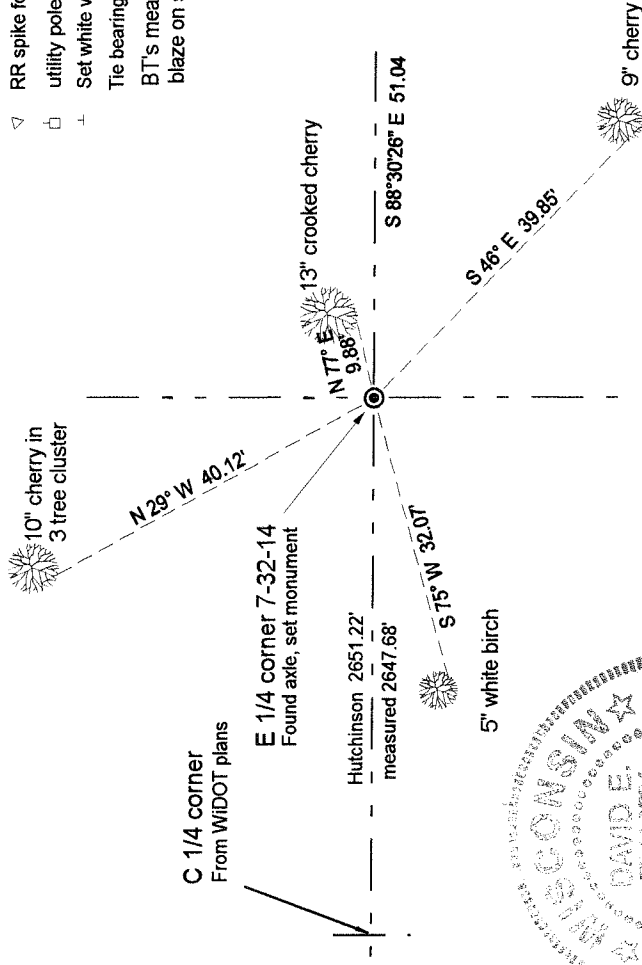
Replaced the axle with a 2" x 30" iron pipe with brass cap, then reset axle on south side of new monument.

**Describe the accessories used to perpetuate the corner. Include a plan view drawing and accessories found/set. Describe measuring point on bearing trees. Show any topographic features that would aid in future recovery of the corner.**

Field book: FB17-97

**LEGEND**

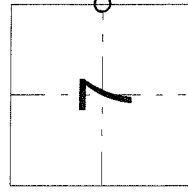
- 3/4" x 30" rebar set
  - 3/4" iron pipe found
  - ⊙ 2" x 30" iron pipe with brass cap set.
  - ▽ RR spike found
  - utility pole
  - ⊕ Set white vinyl sign post on west side of monument
- The bearings magnetic with hand compass.  
BT's measured to alum. nail in low blaze on side of tree.



*David E. Tlusty*  
11/21/00

Index No. \_\_\_\_\_

G5 32-14



○ = corner perpetuated

The East Quarter corner of Section 7, T. 32 N., R. 14 E., Langlade County, WI

I, David E. Tlusty, Registered Land Surveyor, as Langlade County Surveyor, certify that the corner location on this record was determined by me and that this U.S. Public Land Survey Monument Record is correct to the best of my knowledge and belief.