

LANGLADE COUNTY U.S. PUBLIC LAND CORNER RESTORATION

The Southeast corner of Section 6, T. 32 N., R. 14 E., Langlade County, WI.

Corner was: (check all that apply)

3214060000

- Restored through acceptance of an obliterated evidence location.
- Restored through acceptance of a found perpetuated location.
- Determined to be lost and re-established through proportionate methods.
- Show bearings and distances to PLSS corners used for proportioning, and show original distances).
- Restored/recovered/re-established in a location that differs from a previously established position.
- (Show difference in plan view below).
- Check here if additional information is shown on the reverse side of this form.

Describe record evidence, recovered physical evidence, occupational evidence, testimonial evidence and all other evidence considered in the recovery/restoration of the corner.

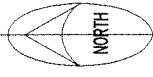
The original corner was established in 1857 by Alfred Millard. Original bearing trees: hemlock, 20", N40°E, 6 links, and a hemlock, 12", S 58° W, 25 links. In 1917, Malcom Hutchinson described the corner: "orig. BT's gone. Found sight trees S & E of the corner. The measurements "corospond" and the old sec. line cross and stump of hemlock SW which think was BT. No question about right place where corner stood". Set buggy axle. I searched for axle but couldn't find it. I reset the corner using Hutchinsons distances from the quarter corners west and south of here.

Physical description of the monument set:

I set a 2" x 30" iron pipe with brass cap for the corner.

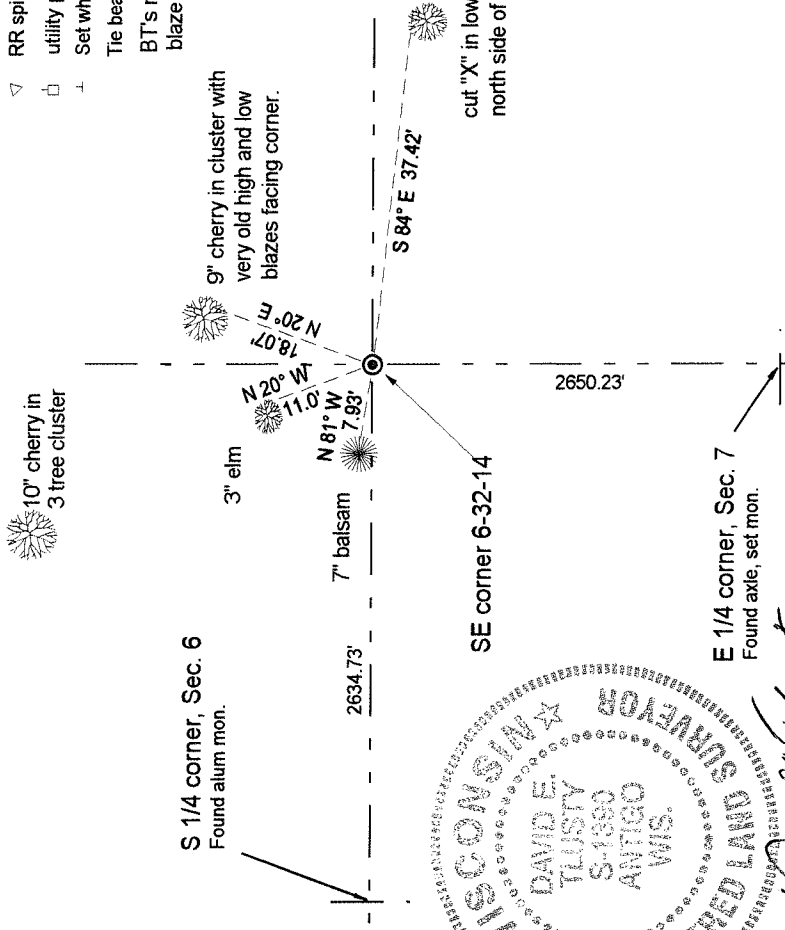
Describe the accessories used to perpetuate the corner. Include a plan view drawing and accessories found/set. Describe measuring point on bearing trees. Show any topographic features that would aid in future recovery of the corner.

Field book: FB17-98



- LEGEND**
- 3/4" x 30" rebar set
 - 3/4" iron pipe found
 - ⊙ 2" x 30" iron pipe with brass cap set.
 - ▽ RR spike found
 - utility pole
 - ┆ Set white vinyl sign post on west side of monument

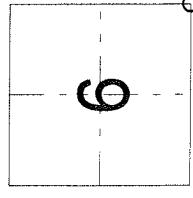
The bearings magnetic with hand compass.
BT's measured to alum. nail in low blaze on side of tree, unless noted.



I, David E. Tlusty, Registered Land Surveyor, as Langlade County Surveyor, certify that the corner location on this record was determined by me and that this U.S. Public Land Survey Monument Record is correct to the best of my knowledge and belief.

Index No. _____

E5 32-14



○ = corner perpetuated
The Southeast corner of Section 6, T. 32 N., R. 14 E., Langlade County, WI