

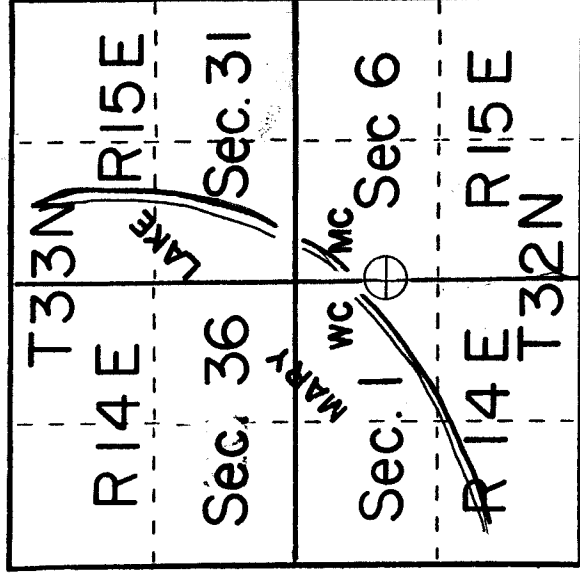
U. S. PUBLIC LAND SURVEY MONUMENT RECORD

I N S T R U C T I O N S : This record shall show the location of the corner and shall include all of the following nine elements (a through i).

- (a) Identify the corner by reference to the U.S. public land survey system.
 O = Corner monument restored.

Meander corner between Sections 1, T32N, R14E and 6, T32N, R15E Oconto and Langlade County, Wisconsin.

*Doc # 351139 - Oconto Co.
 7/26/85*

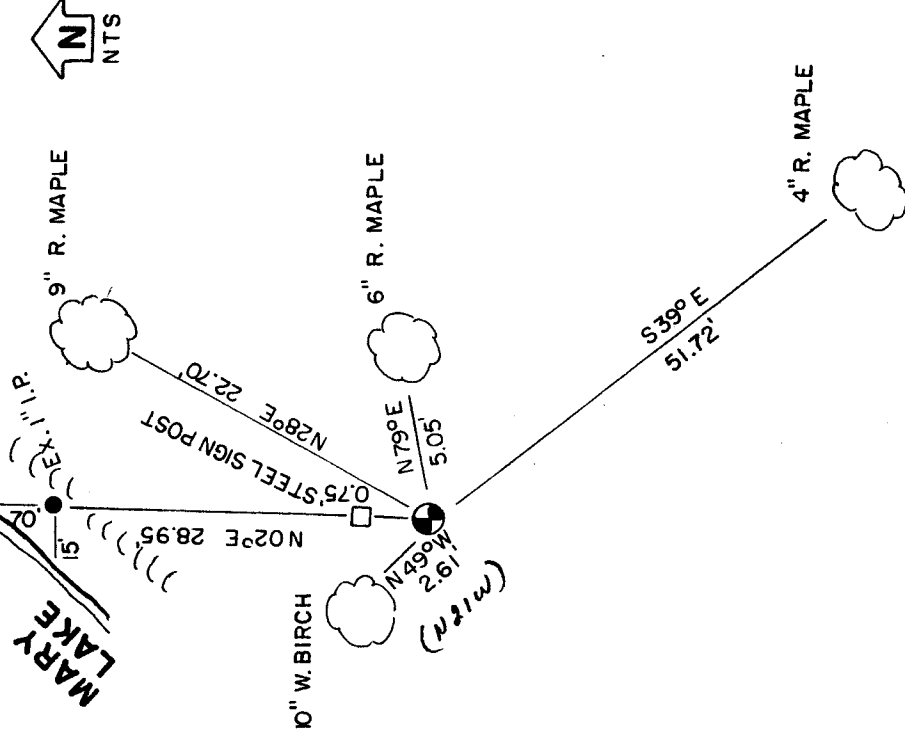


- (b) Describe any record evidence, monument evidence, occupational evidence, testimonial evidence or any other material evidence you considered, and whether the monument was found or placed.

In 1857 J Mc Er de set a wood post at 71.89 chains north with: Cedar 8" N88E 40 links and a White Birch 9" S50E 37 links.
 In 1923, Nathan Smith, surveyor set wood post at the meander corner and at the sixteenth corner to the south.

In Volume 1, Page 24 Document No. 211962 of the Langlade County records, a Certified Survey Map was recorded where Ed Hall monumented the meander corner of Smiths' with a 1" iron pipe.
 I located this iron pipe which fell in line with a squared cedar post at the sixteenth corner and quarter corner just south of this meander post. Blazed trees along this line agreed with area residents. I monumented a Witness corner to this iron pipe meander corner 28.95 feet south.

- (c) In the plan view drawing below, provide reference ties to at least 4 witness monuments, or, if the location is within a municipality, to at least 2 witness monuments. (Witness monuments shall be made of concrete, natural stone, iron or other equally durable material.) Describe witness monuments.



- (d) Show a plan view drawing depicting the relevant monuments and reference ties which is sufficient in detail to enable accurate relocation of the corner monument if the corner monument is disturbed. Indicate north.

Set a 2"x 30" Aluminum monument with cap stamped for corner and accessories set to USFS standard

