

4321401 0000 2017

U.S. PUBLIC LAND SURVEY MONUMENT RECORD

Note: This form is intended and designed to fulfill all requirements of Wisconsin Administrative Code, Chapter A-E 7.08 U.S. Public Land Survey Monument Record (3)(a-h).

(a) CORNER LOCATION

Cor. of Secs. 1, 6, 7 & 12

Township 32 North

Range 14 & 15 East of the 4th P.M.

Town of Wolf River/Townsend/Doty

County of Langlade/Oconto

WISCORS - Langlade County

N: 390,391.59 USft

E: 742,196.08 USft

Datum: NAD 83(2011)

GNSS Method: Static

GNSS Control: WISCORS VRS

	SEC. 1		
	T32N R14E		

(b) HISTORY OF ORIGINAL CORNER ESTABLISHMENT

Original Surveyor: Artemas Curtis

Original Accessories:

Date of Survey Commenced: June, 1857

Completed: July, 1857

Hemlock 10" S66°W, 34 lks.

Sugar 9" N48°W, 22 lks.

Hemlock 18" N24°E, 23 lks.

Hemlock 12" S45°E, 18 lks.

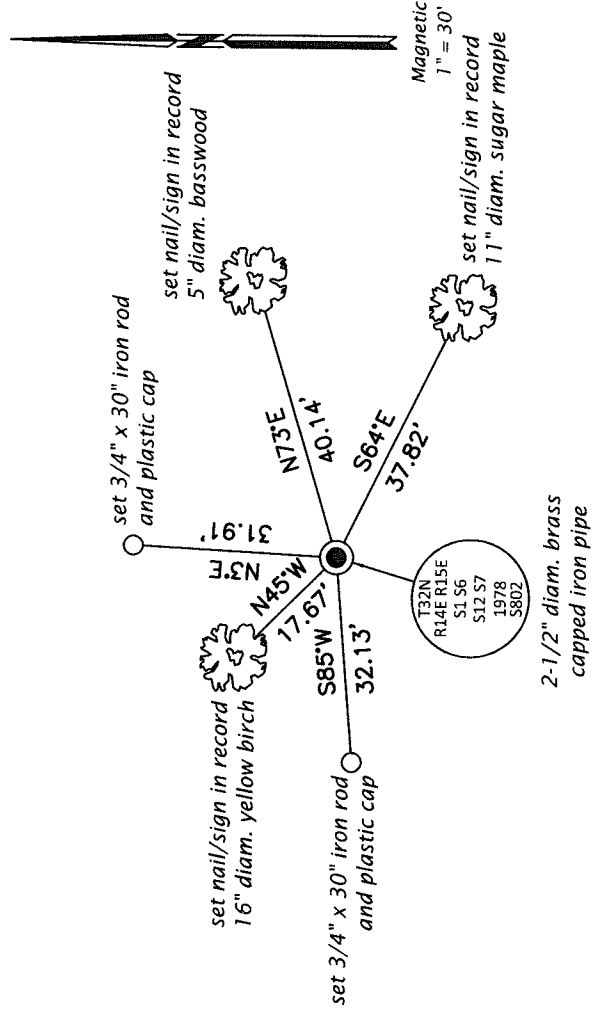
(b)(f)(g)(h) Description of monument found at this corner and if it was accepted, state all evidence (material, testimonial, occupational, plats, records, other monuments) used as a basis for accepting. If not accepted or if nothing was found, state evidence used as basis for establishing location. If re-established through lost corner proportionate methods, indicate all monuments, distances and directions used to establish. Indicate type of monument and sign post found or set.

This is a perpetuation of a previous USPLS Monument Record by Jean F. Resvick, RLS dated June 12, 1978 and filed in the office of the Oconto County Register of Deeds. A complete history of the corner can be found on the previous monument record. I accept the previous location as a true and faithful perpetuation or reestablishment of the original corner location and further perpetuate it as follows.

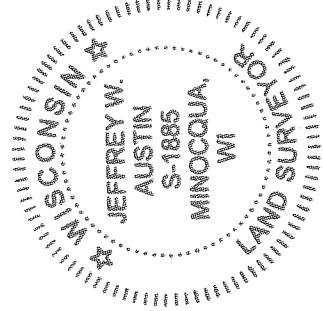
This is a perpetuation of a previous USPLS Monument Record by William F. Kelly, RLS dated November 5, 1990 and filed in the office of the Langlade County Surveyor. A complete history of the corner can be found on the previous monument record. I accept the previous location as a true and faithful perpetuation or reestablishment of the original corner location and further perpetuate it as follows.

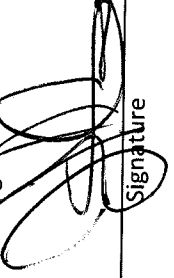
October 29, 2016: I found and accepted the record monument, a 2-1/2" diam. iron pipe with a 3" diam. brass cap projecting 2" above a ring of stone. The record tree at S4°W is now down. I found or established accessories as shown below. A USFS steel sign post bears Northeast, 0.8 ft. I set a white vinyl sign post bearing South, 1.2 ft.

(c)(d)(e) Plan view of corner with ties to at least 4 witness monuments. If in disagreement with previously established corner, show the distances between the two corners and also indicate the ties to the disputed.



(i) I, Jeffrey W. Austin, Professional Land Surveyor No. S-1885, hereby certify that the corner location on this record was determined by me or under my direction and control and that this U.S. Public Land Survey Monument Record is correct and complete to the best of my knowledge and belief.




 _____ Date
 May 6, 2017