

CERTIFIED LAND CORNER RESTORATION

32-13
Index No. Z-23

State of Wisconsin }
County of Langlade } ss.

I, Raymond J. Hallisy, do hereby certify that on the 29th day of June, 1968, I found evidence of the S 1/4 corner of Section 36 Township 32 N, North, Range 13 E, Fourth Principal Meridian, as described hereon; and that from this evidence I established a new monument and accessories as described hereon to perpetuate the original location of this corner.

Resident witnesses:

J. Weix G. KEYKA

History of original corner establishment:

Original survey 1859
Resurvey 1914

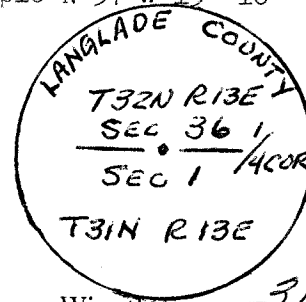
June, 1964, the south line of Section 36 was surveyed to determine a timber trespass on county land. Surveyor in charge, Raymond J. Hallisy S-685

Description of corner evidence found:

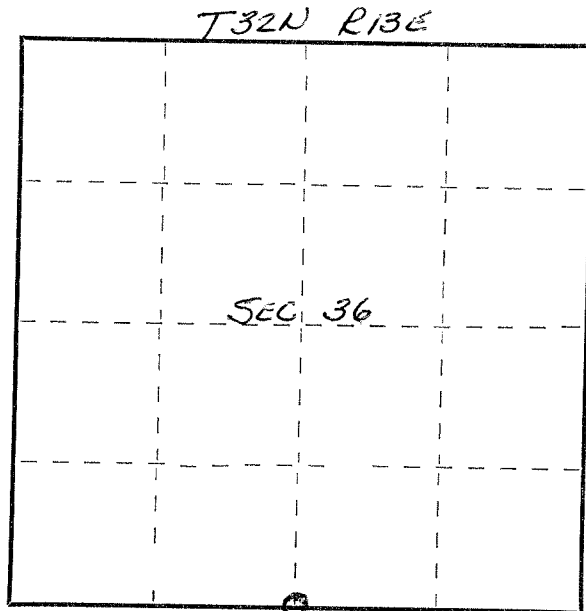
Corner set June, 1964
Squared wood post; Scribed 1/4 Cor. Sec 1 - Sec 36
BT; S 11" Elm S 21° E 28.5 links (18' 11")
14" Hard Maple S 49° W 79 links (52' 9")

Description of monument and accessories I established to perpetuate the original location of this corner.

Set Standard Brass Cap in cement with rock mound.
New BT; 18" Hard Maple N 57° W 15' 10"
Corner marked as:



NEW BT 18" MAPLE
• 1/4 COR - BRASS CAP
• OLD BT 11" ELM
• 14" MAPLE



○ = Corner monument restored.

Dated at Antigo, Wis., this 31 day of August, 1968.

Signature Raymond J. Hallisy Title Reg. Land Surveyor Registration No. S-685
(County Surveyor, Registered Land Surveyor, or other duly authorized official)

Office of Register of Deeds, County of _____, I hereby certify that the within instrument was filed in this office for record on the _____ day of _____, 19____ at _____ o'clock _____ M.

(Register of Deeds)

By _____ Deputy

FORM 985 H. C. MILLER CO., MILWAUKEE