

CERTIFIED LAND CORNER RESTORATION

32-B

Index No. V-19

State of Wisconsin

County of Langlade } ss.

I Raymond S. Hallisy do hereby certify that on the 28th day of April, 1973, I found evidence of the 1/4 corner corner of Section 26 & 35 Township 32, North, Range 13 E, Fourth, Principal Meridian, as described hereon; and that from this evidence I established a new monument and accessories as described hereon to perpetuate the original location of this corner.

Resident witnesses:

.....
.....
.....

History of original corner establishment:

Description of corner evidence found:

Rock mound, hole where stake had been
Blazed lines North & West
Chained from Section corner 25, 26, 35, 36 T32 N R13 E
distance agreed with original distance

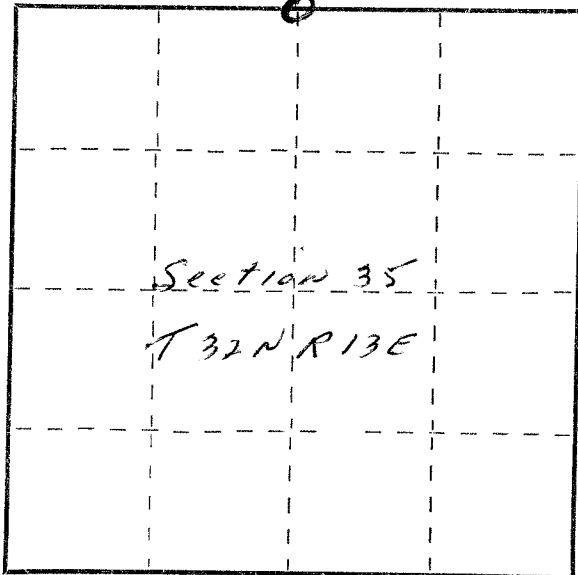
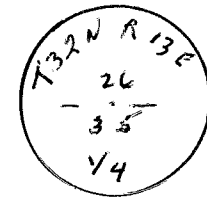
Description of monument and accessories I established to perpetuate the original location of this corner.

Set 1 1/2" pipe with brass cap marked

New BT's

E1M 5" S25E 19.3 FT

E1M 8" ~~S25E~~ 27.9 FT
N59E



Dated at Antigo, Wis., this 28th day of April, 1973

Signature Raymond Hallisy Title Reg. Land Surveyor Registration No. 5-685
(County Surveyor, Registered Land Surveyor, or other duly authorized official)

Office of Register of Deeds, County of _____, I hereby certify that the within instrument was filed in this office for record on the _____ day of _____, 19____ at _____ o'clock _____ M.

(Register of Deeds)

By _____ Deputy

○ = Corner monument restored.

FORM 985 H. C. MILLER CO., MILWAUKEE