

CERTIFIED LAND CORNER RESTORATION

32-13

Index No. R25

State of Wisconsin }  
County of Lan glade } ss.

History of original corner establishment:

I Raymond J. Hallisy, do hereby certify that on the 22nd day of June, 1968, I found evidence of the ~~XXX~~ Section corner of 24, 19, 25, 30 Township 32, North, Range 13 & 14, Fourth, Principal Meridian, as described hereon; and that from this evidence I established a new monument and accessories as described hereon to perpetuate the original location of this corner.

Description of corner evidence found:

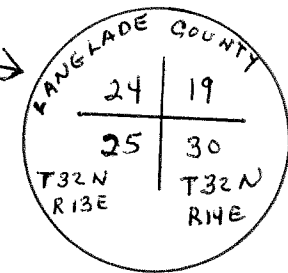
2" iron pipe with BT's described below

Resident witnesses:

.....  
.....  
.....

Description of monument and accessories I established to perpetuate the original location of this corner.

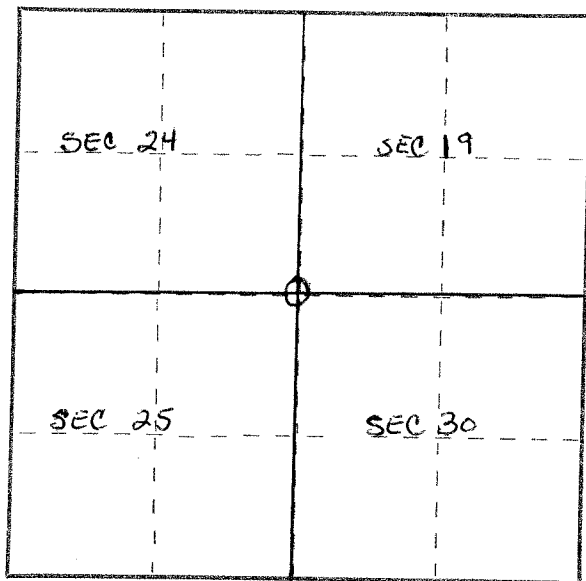
Set 4" concrete 4' long with brass cap marked  
8" Basswood N56E 36' 8"  
SCRIBED BT



← OLD BT 11" HARD MAPLE  
N84E 32' 2"

← OLD BT 12" ELM S60W  
18' 1"

← 5" HARD MAPLE S60E 13' 6"  
SCRIBED BT



Dated at Antigo, Wis., this 22nd day of June, 1968.

Signature Raymond J. Hallisy Title Land Surveyor Registration No. J-685  
(County Surveyor, Registered Land Surveyor, or other duly authorized official)

Office of Register of Deeds, County of \_\_\_\_\_, I hereby certify that the within instrument was filed in this office for record on the \_\_\_\_\_ day of \_\_\_\_\_, 19\_\_\_\_ at \_\_\_\_\_ o'clock \_\_\_\_\_ M.

.....  
(Register of Deeds)

By \_\_\_\_\_ Deputy

○ = Corner monument restored.