

CERTIFIED LAND CORNER RESTORATION

Index No. 0-4

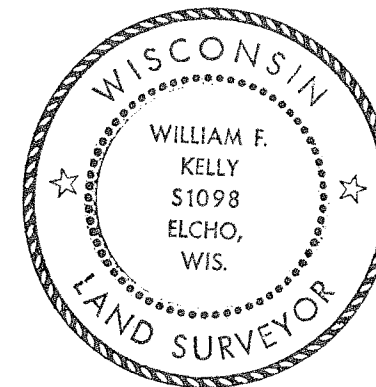
State of Wisconsin }
 County of LANGLADE } ss.

History of original corner establishment:

I WILLIAM F. KELLY, do hereby certify that on the 6th day of SEPTEMBER, 19 78, I found evidence of the NORTH-EAST 1/4 corner of SEC. 19 Township 32, North, Range 13E, Fourth Principal Meridian, as described hereon; and that from this evidence I established a new monument and accessories as described hereon to perpetuate the original location of this corner.

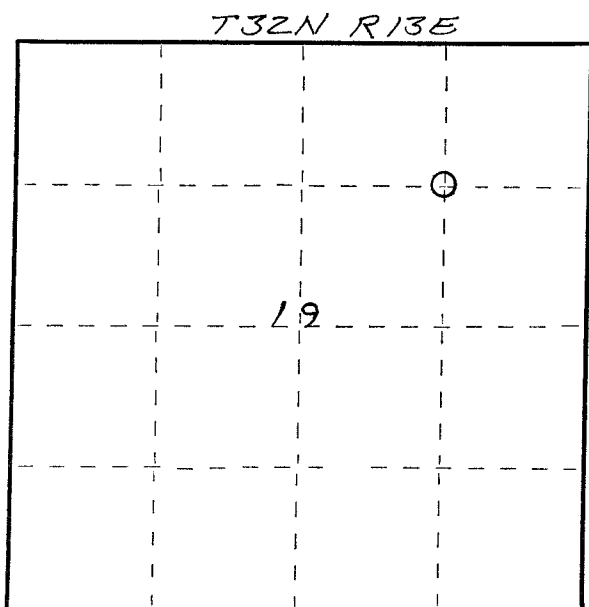
Description of corner evidence found:

Resident witnesses:

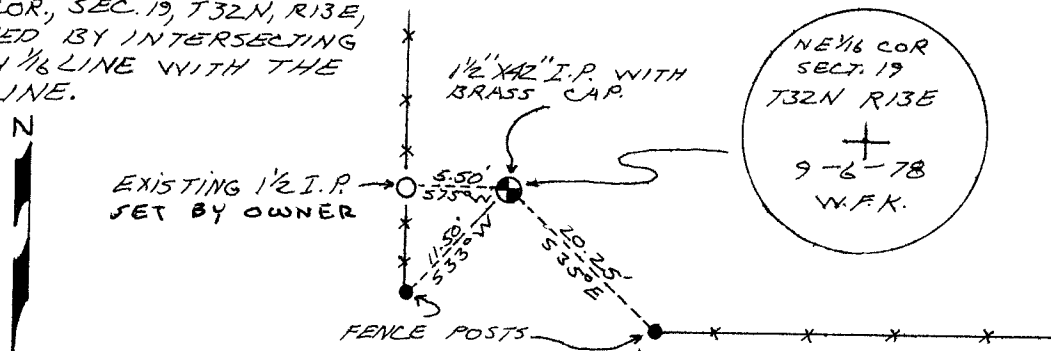


Description of monument and accessories I established to perpetuate the original location of this corner.

FORM 985 H. C. MILLER CO., MILWAUKEE



SET NE 1/4 COR., SEC. 19, T32N, R13E, ESTABLISHED BY INTERSECTING THE NORTH 1/4 LINE WITH THE EAST 1/4 LINE.



Dated at ELCHO, Wis., this 16th day of SEPT, 19 78.

Signature William F. Kelly Title County Surveyor Registration No. S 1098
 (County Surveyor, Registered Land Surveyor, or other duly authorized official)

Office of Register of Deeds, County of _____, I hereby certify that the within instrument was filed in this office for record on the _____ day of _____, 19 _____ at _____ o'clock _____ M.

(Register of Deeds)

By _____ Deputy

○ = Corner monument restored.