

CERTIFIED LAND CORNER RESTORATION

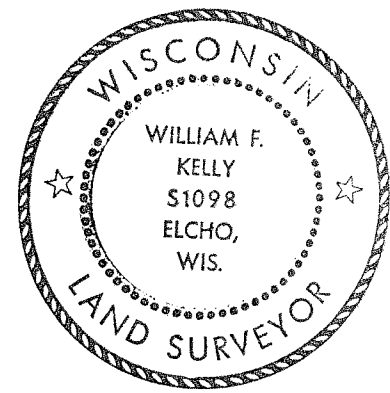
Index No. P-4

State of Wisconsin }
County of LANGLADE } ss.

History of original corner establishment:

I WILLIAM F. KELLY, do hereby certify that on the 6th day of SEPTEMBER, 1978, I found evidence of the East 1/8 COR. corner of SECTION 19 Township 32, North, Range 13E, Fourth Principal Meridian, as described hereon; and that from this evidence I established a new monument and accessories as described hereon to perpetuate the original location of this corner.

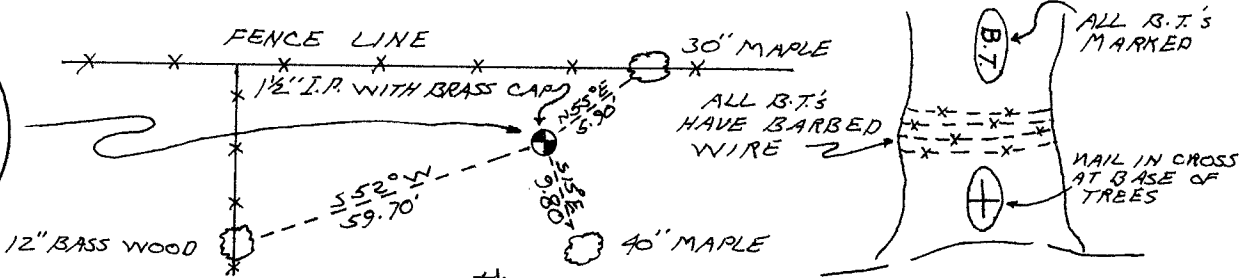
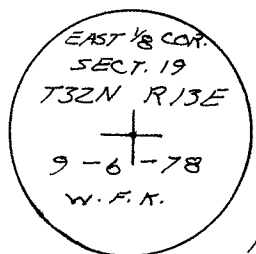
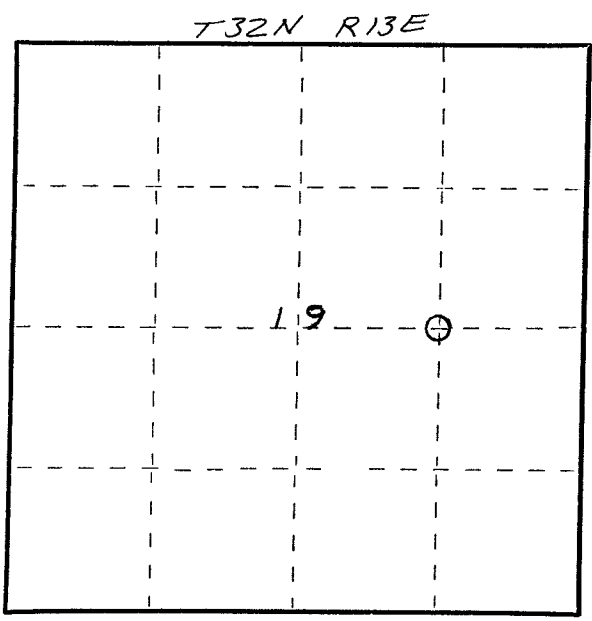
Description of corner evidence found:
FOUND NONE



Resident witnesses:

Description of monument and accessories I established to perpetuate the original location of this corner.

SET BRASS CAP & NEW B.T.'S
- THIS COR. SET BY SPLITTING THE DIST. BETWEEN THE CEN. 1/4 COR. & THE E. 1/4 COR. -



Dated at ELCHO, Wis., this 15th day of SEPTEMBER, 1978.

Signature William F. Kelly Title County Surveyor Registration No. S 1098
(County Surveyor, Registered Land Surveyor, or other duly authorized official)

Office of Register of Deeds, County of _____, I hereby certify that the within instrument was filed in this office for record on the _____ day of _____, 19____ at _____ o'clock _____ M.

(Register of Deeds)

By _____ Deputy

○ = Corner monument restored.

FORM 985 H. C. MILLER CO., MILWAUKEE