

43213180020

U.S. PUBLIC LAND SURVEY MONUMENT RECORD

(Prepared and as required by S. A-E 7.08 WI Administrative Code)

The North 1/4 corner of Section 19, T. 32 N., R. 13 E., Langlade County, WI
 Corner was (check all that apply)

- Restored through acceptance of an obliterated evidence location.
- Restored through acceptance of a found perpetuated location.
- Determined to be lost and re-established through proportionate methods.
 (show bearings and distances to PLSS corners used for proportioning.)
- Restored/recovered/re-established in a location that differs from a previously established position. (Show difference in plan view below.)
- Check here if additional information is shown on the reverse side of this form.

Describe record evidence, recovered physical evidence, occupational evidence, testimonial evidence and all other evidence considered in the recovery/restoration of the corner.

Sept. 1857 - Alfred Millard set original corner. BTs: Hemlock 10", N74W, 10 links; Elm 10", N17E, 22 links.

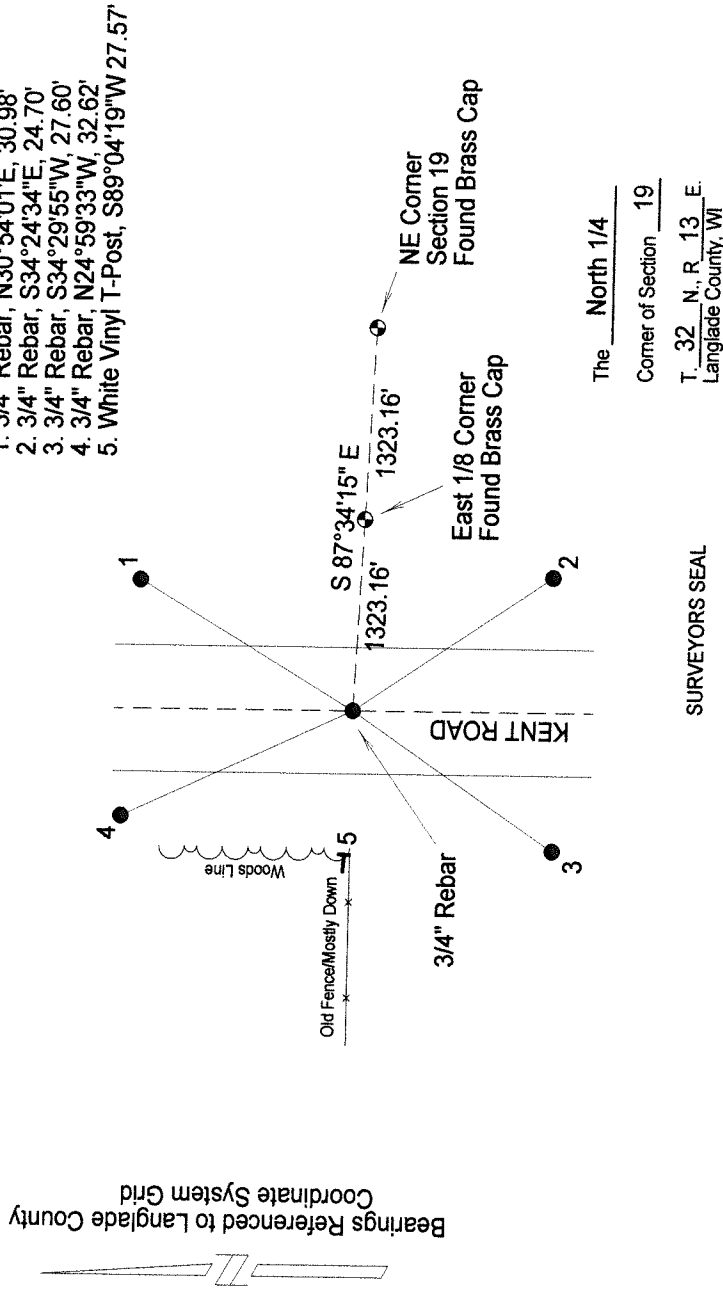
No other maps, notes, or information were found for this corner.

June 2006 - I found the 1/8 corner and section corner to the east of the approximate 1/4 corner location. Doubling the distance on an extension of the line between the 1/8 and section corner places the corner in the center of Kent Road, and on line with East-West evidence in the form of the wood's edge and an old fence line. I accept this location as the best evidence of the perpetuated original location.

Physical description of the monument set:

Set 3/4 inch Rebar for corner, with ties as described below.

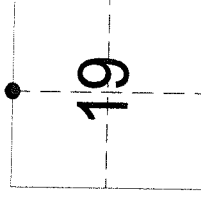
Describe the accessories used to perpetuate the location of the corner. Include a plan view drawing and indicate accessories found/set. Describe measuring point on bearing trees. Show any topographic features that would aid in future recovery of the corner.



1. 3/4" Rebar, N30°54'01"E, 30.98'
2. 3/4" Rebar, S34°24'34"E, 24.70'
3. 3/4" Rebar, S34°29'55"W, 27.60'
4. 3/4" Rebar, N24°59'33"W, 32.62'
5. White Vinyl T-Post, S89°04'19"W 27.57'

The North 1/4
 Corner of Section 19
 T. 32 N., R. 13 E.
 Langlade County, WI

SURVEYORS SEAL



● = Location of corner

I, Timothy J. Rusch, certify that the corner location shown on this record was determined by me or under my direction and control and that this U.S. Public Land Survey Monument Record is correct and complete to the best of my knowledge and belief.

Timothy J. Rusch 8-8-2006
 Signature Date

