

LANGLADE COUNTY U.S. PUBLIC LAND CORNER RESTORATION

The Southeast corner of Section 17, T. 32 N., R. 13 E., Langlade County, WI.

Corner was: (check all that apply)

43213170000

- Restored through acceptance of an obliterated evidence location.
- Restored through acceptance of a found perpetuated location.
- Determined to be lost and re-established through proportionate methods.
- Show bearings and distances to PLSS corners used for proportioning, and show original distances).
- Restored/recovered/re-established in a location that differs from a previously established position.
- (Show difference in plan view below).
- Check here if additional information is shown on the reverse side of this form.

Describe record evidence, recovered physical evidence, occupational evidence, testimonial evidence and all other evidence considered in the recovery/restoration of the corner. $562^{\circ}W$

The original corner was established in 1857 by Alfred Millard. Original bearing trees: linn, 10", S 6° E, 21 links and a sugar, 16", N 50° E, 50 links. In April, 2004, Roy Zubrod, forester for Plum Creek showed this corner to me. There exists a 1 1/4" x 24"± iron pipe in a small mound of stones. There is a 4" squared wood post approx. 30 - 40 years old lying on the ground. At the north edge of the logging road to the south there is an aluminum location tag stamped "NATIONAL CONTAINER CORP" and is dated Oct. 22, 1956 by E. Hoff. There are no records on this corner however the monumentation found is consistent with other monumentation in this area known to be done by Bill Stuth, Owens-Illinois surveyor in the 1950's-1970's. I believe that either National Container may have had their own staff who found or set the corner, or Stuth may have found or set the corner, and in either case, it appears that this location works with other corners in the area (through rough GPS work) I accept the pipe found as the best evidence of the corner.

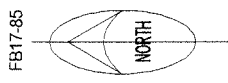
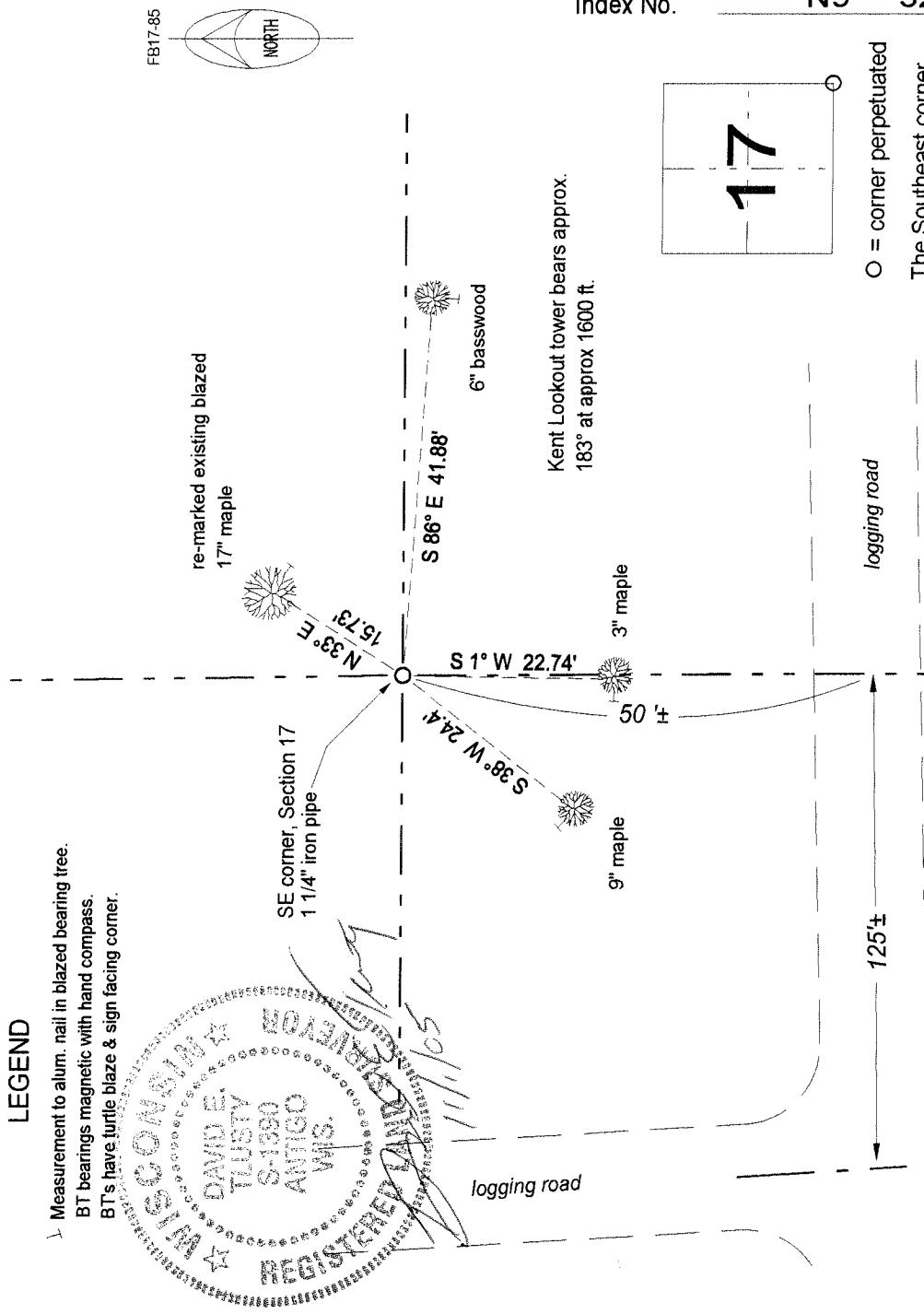
Physical description of the monument set:

I left the existing 1 1/4" iron pipe in place in a small mound of stones and set a sign post, 0.6' North.

Describe the accessories used to perpetuate the corner. Include a plan view drawing and accessories found/set. Describe measuring point on bearing trees. Show any topographic features that would aid in future recovery of the corner.

LEGEND

- Measurement to alum. nail in blazed bearing tree.
- BT bearings magnetic with hand compass.
- BT's have turtle blaze & sign facing corner.



Index No. **N9** **32-13**

O = corner perpetuated
The Southeast corner of Section 17,
T. 32 N., R. 13 E.,
Langlade County, WI

I, David E. Trusty, Registered Land Surveyor, as Langlade County Surveyor, certify that the corner location on this record was determined by me and that this U. S. Public Land Survey Monument Record is correct to the best of my knowledge and belief.