

CERTIFIED LAND CORNER RESTORATION

Index No. L-19

State of Wisconsin }
County of Lantern } ss.

History of original corner establishment:

I Raymond Hallisy, do hereby certify that on the 3rd day of August, 1974, I found evidence of the Center 14 corner of Section 14 Township 32, North, Range 13E, Fourth Principal Meridian, as described hereon; and that from this evidence I established a new monument and accessories as described hereon to perpetuate the original location of this corner.

Description of corner evidence found:

3/4" pipe inside 1 1/2" pipe. Squared stake behind

BT's

12" Hard Maple S76W 12 FT 4 inches

8" Red Maple N48W 19 FT 6 inches

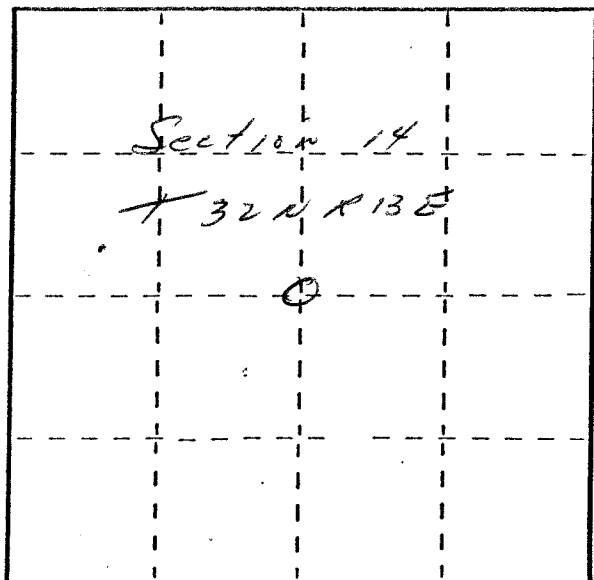
Resident witnesses:

Description of monument and accessories I established to perpetuate the original location of this corner.

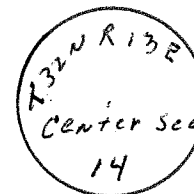
Set 2" pipe with brass cap alongside pipes

No new BT's

FORM 985 H. C. MILLER CO., MILWAUKEE



O = Corner monument restored.



Dated at Ap 190, Wis., this 3rd day of August, 1974.

Signature Raymond Hallisy Title Reg. Land Surveyor Registration No. 5-685
(County Surveyor, Registered Land Surveyor, or other duly authorized official)

Office of Register of Deeds, County of _____, I hereby certify that the within instrument was filed in this office for record on the _____ day of _____, 19____ at _____ o'clock _____ M.

(Register of Deeds)

By _____ Deputy