

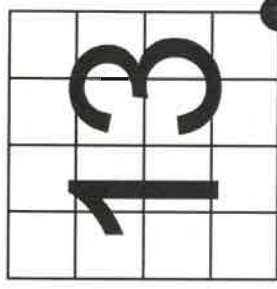
1321313 0000

U S PUBLIC LAND SURVEY MONUMENT RECORD

NOTE: This form is intended and designed to fulfill all requirements of Wisconsin Administrative Code, Chapter A-E 7.08 U.S. Public Land Survey Monument Record (3) (e-i)

(a) CORNER LOCATION
SE CORNER OF SECTION 13
TOWNSHIP 32 NORTH
RANGE 13 EAST OF THE 4TH PM
TOWN OF LANGLADE
COUNTY OF LANGLADE

WISCONSIN - LANGLADE COUNTY
N: 710,292.46
E: 379,523.83
Datum: NAD83 (2011)
GNSS Method RTN - Direct
GNSS Control WISCORS VRS



(b) HISTORY OF ORIGINAL CORNER ESTABLISHMENT

Original Surveyor: Alfred Millard Original Accessories: Elm 16 N75W 32 links
Y Birch 18 S49E 61 links
Y Birch ___ S20W 30 links

Date of Survey Commenced: June 1857 Completed: October 1857
See previous USPLS Monument Record: Index No. N-25

(f)(g)(h) Description of monument found at this corner and if it was accepted, state all evidence (material, testimonial, occupational, plats, records, other monuments) used as a basis for accepting. If not accepted or if nothing was found, state evidence used as basis for establishing location. If re-established through lost corner proportionate methods, indicate all monuments, distances and directions used to establish. Indicate type of monument and sign post found or set.

July 1961 - Eddie Anderson surveyed property of Ray Van Beek and indicates a monument at the NE Corner Section 24, T32N., R13E., per Langlade County Map Number 10027

October 1978 - William F. Kelly found a 2" pipe with a galvanized cap scribed to identify corner, and witnessed per Certified Land Corner Restoration - Index No. N-25

December 1983 M. Seymour #1412 "made new BT MH 8" 52°E 23.55' " per note on Certified Land Corner Restoration - Index No. N-25

May 1986 - William H. Stuth - Surveyor for Owens-Illinois demotes a monument at the NE Corner Section 24, T32N., R13E., per Langlade County Map Number 10400

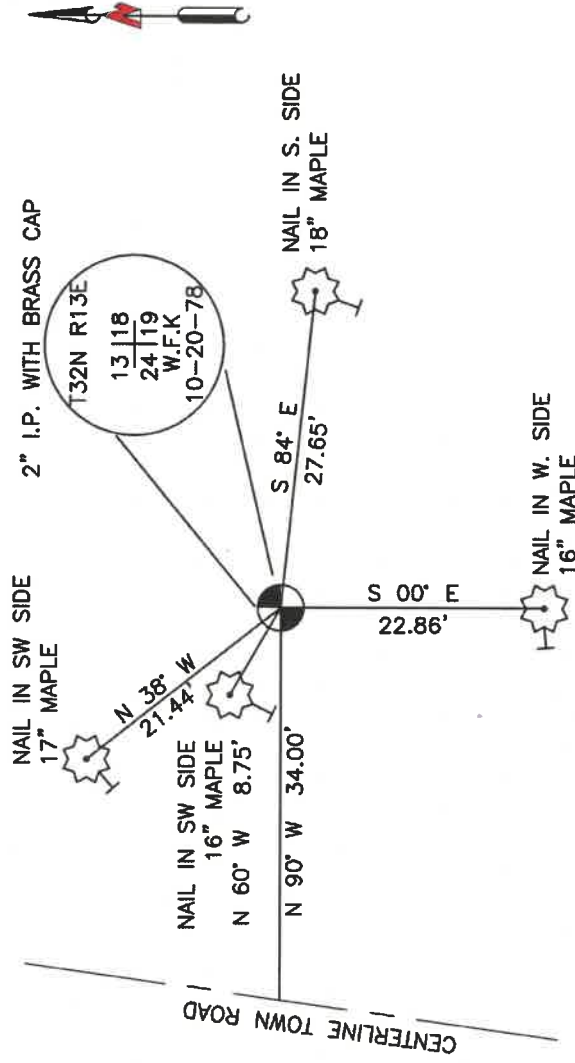
December 2017 - Timothy J. Rusch - Surveyor found a brass capped monument at the NE Corner Section 24, T32N., R13E., per Langlade County Map Number 11005

September 2018 - Timothy J. Rusch - Surveyor found a brass capped monument at the NE Corner Section 24, T32N., R13E., per Langlade County Map Number 11004

January 2021 - I James E. Anderson - Surveyor find and accept a 2" I.P. with a Brass Cap stamped to identify corner and witnessed as shown below.

The coordinate value shown has been verified by comparison to a previously GPS determined published value.

(i)(d)(e) Plan view of corner with ties to at least 4 witness monuments. If in disagreement with previously established corner, show the distances between the two corners and also indicate the ties to the disputed.



N25 32-13



(I) I, James E Anderson, Professional Land Surveyor No. S-3127, hereby certify that the corner location on this record was determined by me or under my direction and control and that this U.S. Public Land Survey Monument Record is correct and complete to the best of my knowledge, and belief

SIGNATURE *James E. Anderson* DATE 07/11/2021

DATE

CERTIFIED LAND CORNER RESTORATION

Index No. N-25

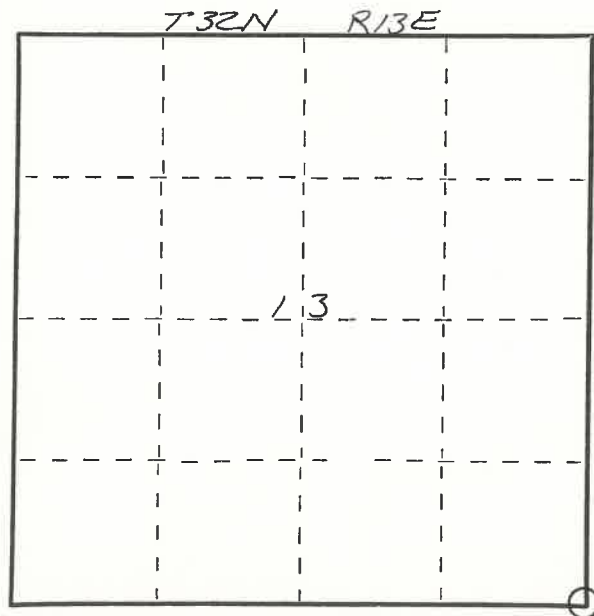
State of Wisconsin }
 County of LANGLADE } ss.

I, WILLIAM F. KELLY, do hereby certify that on the 20 day of OCTOBER, 19 78, I found evidence of the SOUTH-EAST corner of SECTION 13 Township 32, North, Range 13E, Fourth Principal Meridian, as described hereon; and that from this evidence I established a new monument and accessories as described hereon to perpetuate the original location of this corner.

Resident witnesses:

.....

FORM 985 R. C. MILLER CO., MILWAUKEE

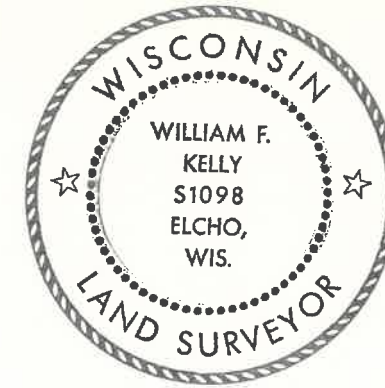


○ = Corner monument restored.

History of original corner establishment:

Description of corner evidence found:
FOUND 2" PIPE WITH GALVANIZED CAP, SCRIBED

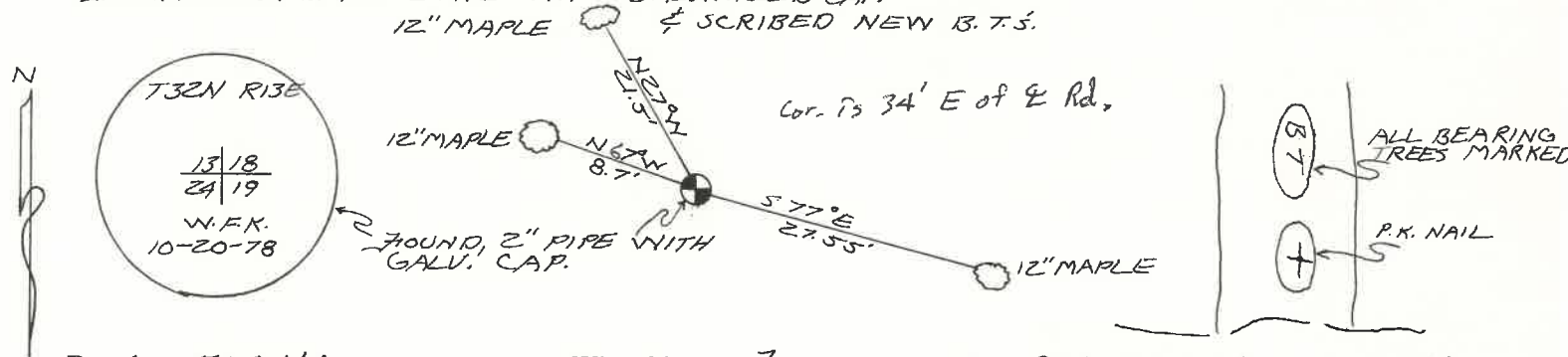
T32N R13E
 $\frac{13}{24} | \frac{18}{19}$



William F. Kelly

Description of monument and accessories I established to perpetuate the original location of this corner.

INITIALIZED & DATED 2" PIPE WITH GALVANIZED CAP.
12" MAPLE & SCRIBED NEW B.T.S.



Dated at ELCHO, Wis., this 7 day of DECEMBER, 19 78.

Signature William F. Kelly Title COUNTY SURVEYOR Registration No. S-1098
 (County Surveyor, Registered Land Surveyor, or other duly authorized official)

Office of Register of Deeds, County of, I hereby certify that the within instrument was filed in this office for record on the day of, 19..... at o'clock M.

(Register of Deeds)

By Deputy