

4 32 13 12 20 00

U.S. PUBLIC LAND SURVEY MONUMENT RECORD

HISTORY OF ORIGINAL CORNER ESTABLISHMENT AND SUBSEQUENT RESTORATION AND DESCRIPTION OF ANY RECORD, MONUMENT OCCUPATIONAL, TESTIMONIAL OR OTHER EVIDENCE CONSIDERED:

THE ORIGINAL 1/4 CORNER WAS ESTABLISHED IN 1857 BY ALFRED MILLARD. ORIGINAL BEARING TREES: HEMLOCK 8" N29W 10LKS., HEMLOCK 10" S30E BLKS.

IN DECEMBER OF 1917, HUTCHINSON RAN A LINE EAST ON THE 1/4 LINE, AND *SET THE CENTER OF SEC. 43.01 CHAINS FROM THE WEST 1/4 POST*

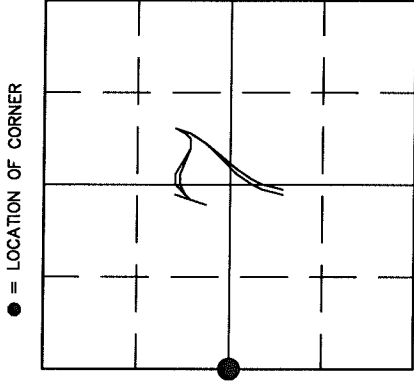
ON JAN 17, 2006, GERRY BAHAR AND JAKE JENSEN SEARCHED FOR THE 1/4 CORNER BASED ON HUTCHINSON'S NOTES: 2838.66' WEST OF THE CENTER 1/4 (FD IRON BOLT) ON A LINE FROM THE EAST 1/4 EXTENDED THROUGH THE C 1/4. WE FOUND AN OLD 1.25" PIPE, RUSTED, BROKE AND BENT OVER, 1.3' SOUTH OF ABOVE DESCRIBED LINE AND 12' SHORT OF HUTCHINSON'S DISTANCE.

WE ACCEPTED THIS LOCATION AS THE BEST EVIDENCE OF THE ORIGINAL LOCATION, REPLACED THE BENT PIPE WITH A 2"x36" IRON PIPE WITH A BRASS CAP STAMPED "LANGLADE COUNTY MONUMENT", AND TIED IT OUT AS SHOWN.

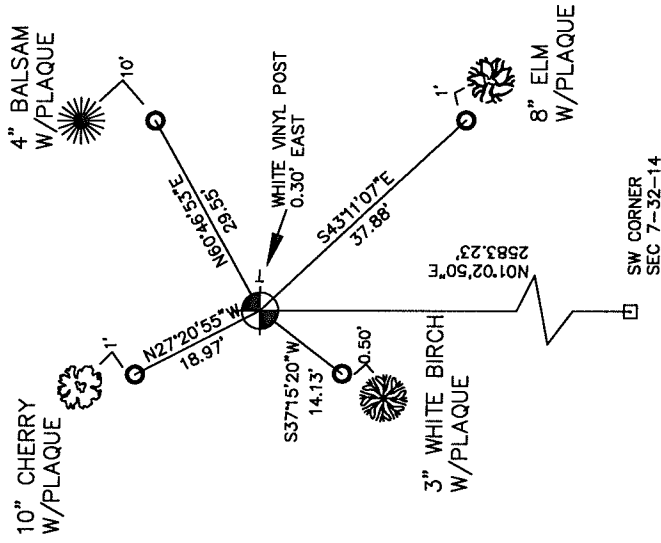
CORNER WAS: (CHECK ALL THAT APPLY)

- RESTORED THROUGH ACCEPTANCE OF AN OBLITERATED EVIDENCE LOCATION
- RESTORED THROUGH ACCEPTANCE OF A FOUND PERPETUATED LOCATION
- CONSIDERED A LOST CORNER AND REESTABLISHED THROUGH LOST CORNER PROPORTIONATE METHODS (INCLUDE A PLAN VIEW DRAWING SHOWING DISTANCES AND DIRECTIONS TO OTHER PUBLIC LAND SURVEY CORNERS USED FOR PROPORTIONING AND DETERMINING THE CORNER LOCATION)
- RESTORED OR REESTABLISHED IN A LOCATION THAT DIFFERS FROM A PREVIOUS RESTORATION OR REESTABLISHMENT (INCLUDE A PLAN VIEW DRAWING AND INDICATE WHAT WAS SET AND/OR FOUND)
- CHECK IF THERE IS ADDITIONAL INFORMATION ON BACK

DESCRIBE THE MONUMENT AND ACCESSORIES USED TO PERPETUATE THE LOCATION OF THE CORNER. (INCLUDE A PLAN VIEW DRAWING AND INDICATE WHAT WAS SET AND/OR FOUND) ALSO INCLUDE FOUR TIES TO THE SECTION CORNER AND DESCRIPTION OF THE TIES.



SECTION 7
 TOWNSHIP 32 NORTH, RANGE 14 EAST
 TOWN OF WOLF RIVER
 LANGLADE COUNTY, WISCONSIN



SET 2" IRON PIPE WITH BRASS CAP, STAMPED LANGLADE CO MONUMENT

SET 3/4"x30"REBARS AT THE LOCATIONS

THICK AND BRUSHY WOODS

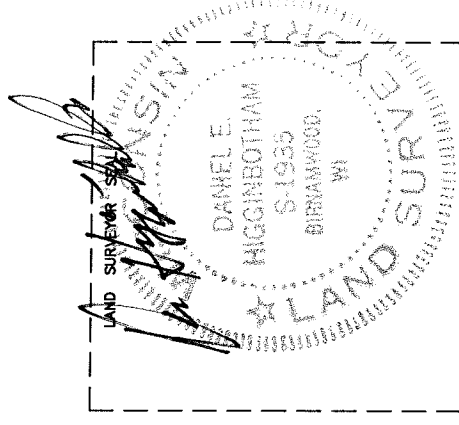
DANIEL E. HIGGINBOTHAM

(Type or print name) CERTIFY THAT THE CORNER LOCATION SHOWN ON THIS RECORD WAS DETERMINED BY ME OR UNDER MY DIRECTION AND CONTROL AND THAT THIS U.S. PUBLIC LAND SURVEY MONUMENT RECORD IS CORRECT AND COMPLETE TO THE BEST OF MY KNOWLEDGE AND BELIEF.

SIGNATURE

1/23/06

DATE



G1 32-14

INDEX NO.