

4321307 0020

# U.S. PUBLIC LAND SURVEY MONUMENT RECORD

(Prepared and as required by S. A-E 7.08 WI Administrative Code)

The NORTH 1/4 corner of Section 18, T. 32 N., R. 13 E., Langlade County, WI  
Corner was (check all that apply)

- Restored through acceptance of an obliterated evidence location.
- Restored through acceptance of a found perpetuated location.
- Determined to be lost and re-established through proportionate methods. (show bearings and distances to PLSS corners used for proportioning.)
- Restored/recovered/re-established in a location that differs from a previously established position. (Show difference in plan view below.)
- Check here if additional information is shown on the reverse side of this form.

**Describe record evidence, recovered physical evidence, occupational evidence, testimonial evidence, and all other evidence considered in the recovery/restoration of the corner.**

Sept. 1857 - A. Millard set original 1/4 section post; Yellow Birch 34", S64°E, 25 links; Sugar 12", N37°W, 59 links.

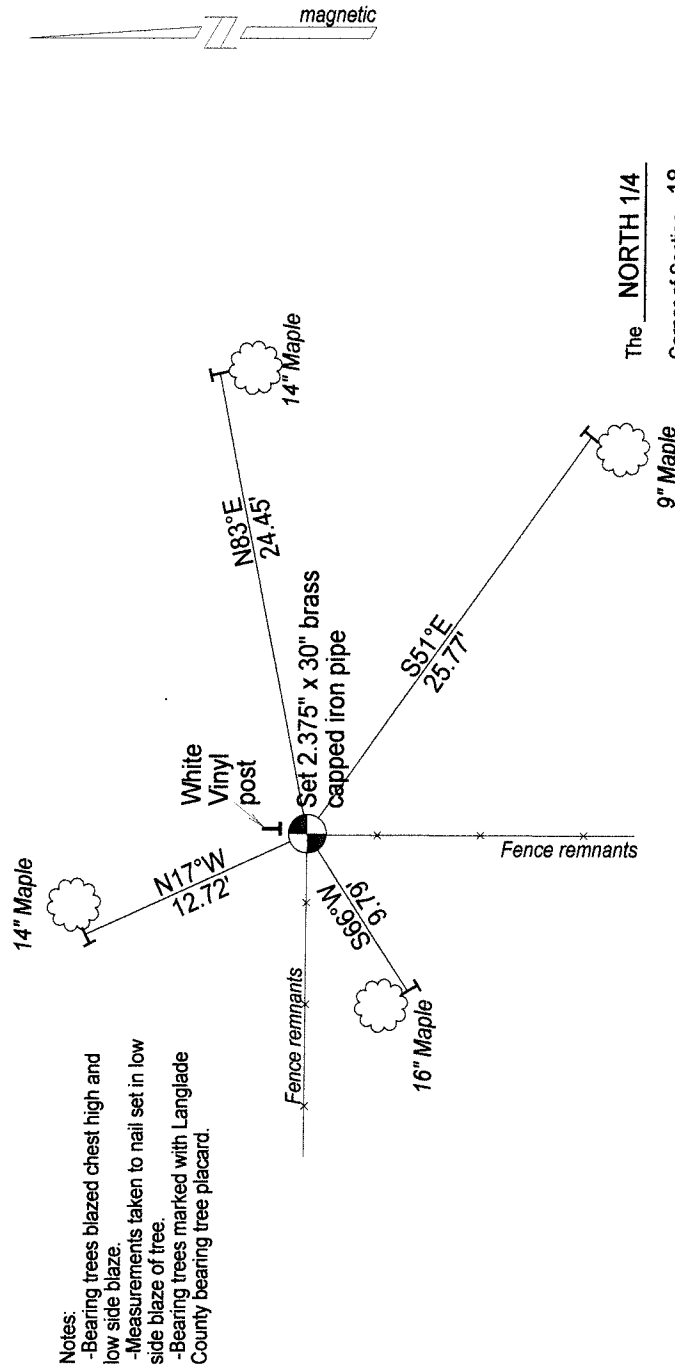
1996 - Robert Yarbrough surveying in the NW 1/4 of Section 18, shows a distance from the NW corner to the North 1/4 corner of 2874.4' on map #10463 of Langlade County Records. Yarbrough does not indicate what was found/used for the North 1/4 corner.

2012 - I did not find any evidence of any original BT's or post set by Millard. I found existing fence remnants intersecting from the West and South. I accept this intersection as the best available evidence of the corner location. Corner location matches well with original distances to the NW corner (43.5 chs. = 2871') measured 2881'±, and to the NE corner (40.00 chs. = 2640') measured 2639.74'.

### Physical description of the monument set:

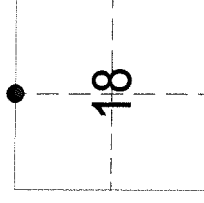
I set a 2.375" x 30" iron pipe with brass cap as the corner, and tied it out as follows.

Describe the accessories used to perpetuate the location of the corner. Include a plan view drawing and indicate accessories found/set. Describe measuring point on bearing trees. Show any topographic features that would aid in future recovery of the corner.

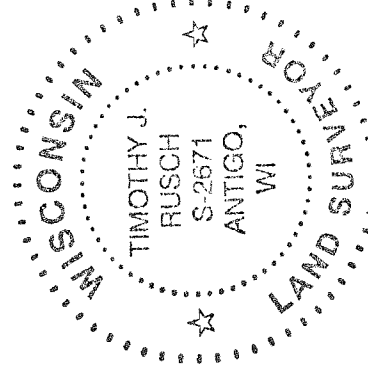


The NORTH 1/4  
Corner of Section 18

T. 32 N., R. 13 E.  
Langlade County, WI



● = Location of corner



I, Timothy J. Rusch certify that the corner location shown on this record was determined by me or under my direction and control and that this U.S. Public Land Survey Monument Record is correct and complete to the best of my knowledge and belief.

Timothy J. Rusch 11-04-2012  
Signature Date