

LANGLADE COUNTY U.S. PUBLIC LAND CORNER RESTORATION

The East Quarter corner of Section 5, T. 32 N., R. 13 E., Langlade County, WI.

Corner was: (check all that apply)

- Restored through acceptance of an obliterated evidence location.
- Restored through acceptance of a found perpetuated location.
- Determined to be lost and re-established through proportionate methods.
- Show bearings and distances to PLSS corners used for proportioning, and show original distances).
- Restored/recovered/re-established in a location that differs from a previously established position.
- (Show difference in plan view below).
- Check here if additional information is shown on the reverse side of this form.

432130520000

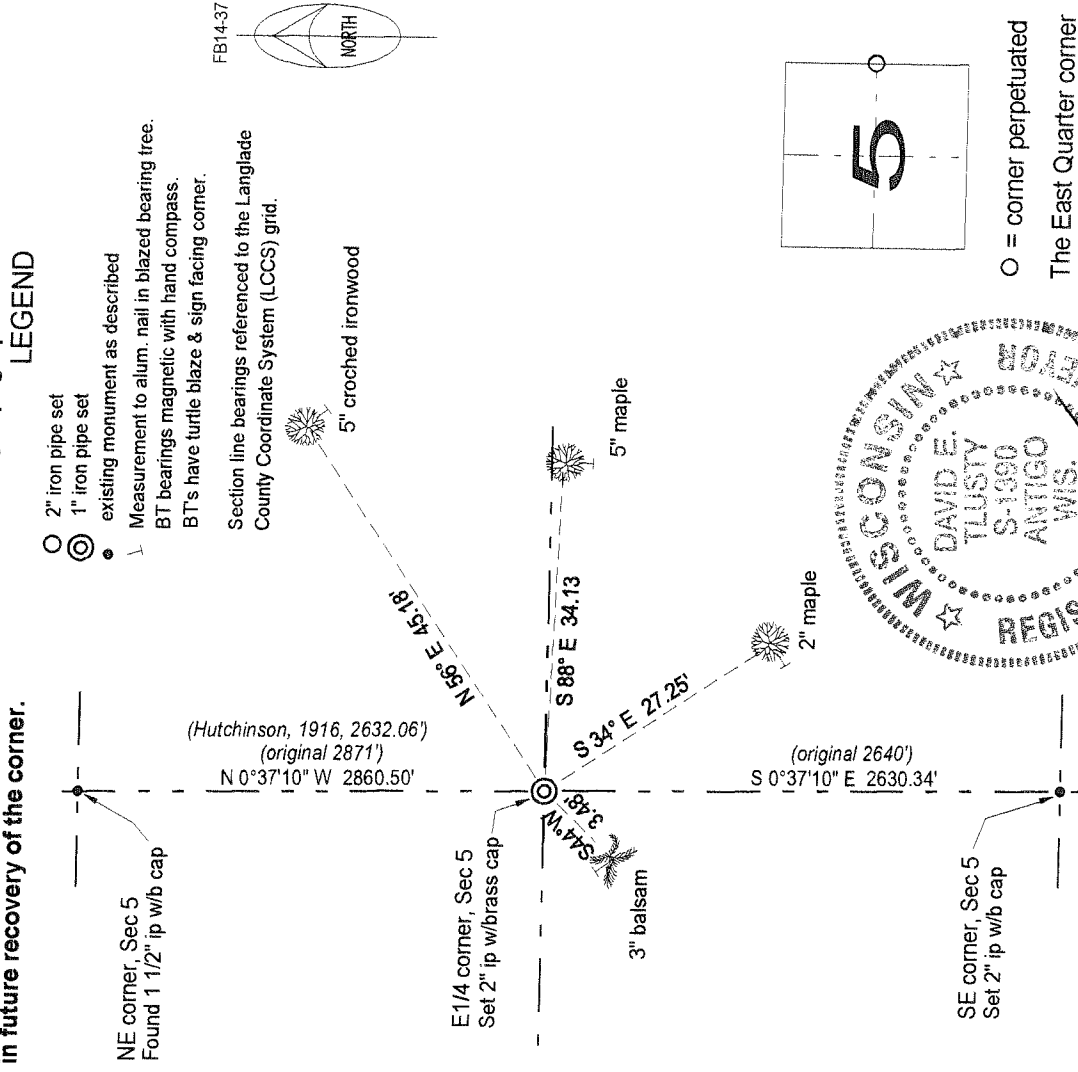
Describe record evidence, recovered physical evidence, occupational evidence, testimonial evidence and all other evidence considered in the recovery/restoration of the corner.

The original corner was established in 1857 by Alfred Millard. Original bearing trees: hemlock, 12", West, 32 links and a yellow birch, 20", S78°E, 14 links. In 1916, Malcolm Hutchinson used this corner to prorate in a section corner 1.5 miles north of here. He found the "stump of orig BT with marks" here and marked two new bearing trees. I searched extensively at Hutchinsons distance from the section corner to the north. Found no evidence of the original corner or of Hutchinsons. I established this corner by single proportionate measurement between the NE and SE corners of Section 5.

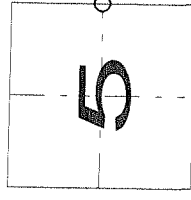
Physical description of the monument set:

Set a 2" x 30" iron pipe with a brass cap, top of which is 0.3' above ground.

Describe the accessories used to perpetuate the corner. Include a plan view drawing and accessories found/set. Describe measuring point on bearing trees. Show any topographic features that would aid in future recovery of the corner.



Index No. C9 32-13



○ = corner perpetuated
The East Quarter corner of Section 5, T. 32 N., R. 13 E., Langlade County, WI



I, David E. Tlusty, Registered Land Surveyor, as Langlade County Surveyor, certify that the corner location on this record was determined by me and that this U.S. Public Land Survey Monument Record is correct to the best of my knowledge and belief.

David E. Tlusty
6/15/04