

LANGLADE COUNTY U.S. PUBLIC LAND CORNER RESTORATION

The South Quarter corner of Section 5, T. 32 N., R. 13 E., Langlade County, WI.

Corner was: (check all that apply)

- Restored through acceptance of an obliterated evidence location.
- Restored through acceptance of a found perpetuated location.
- Determined to be lost and re-established through proportionate methods.
- Show bearings and distances to PLSS corners used for proportioning, and show original distances).
- Restored/recovered/re-established in a location that differs from a previously established position.
- (Show difference in plan view below).
- Check here if addition information is shown on the reverse side of this form.

43213050020

Describe record evidence, recovered physical evidence, occupational evidence, testimonial evidence and all other evidence considered in the recovery/restoration of the corner.

The original corner was established in 1857 by Alfred Millard. Original bearing trees: hemlock, 12", N75°E, 16 links and a hemlock, 11", S70°W, 19 links. There is no evidence in the records to indicate that this corner was ever used or maintained after the original government survey. I re-established this corner by single proportionate measurement between the Southwest corner of Section 5 and the Southeast corner of Section 5.

Physical description of the monument set:

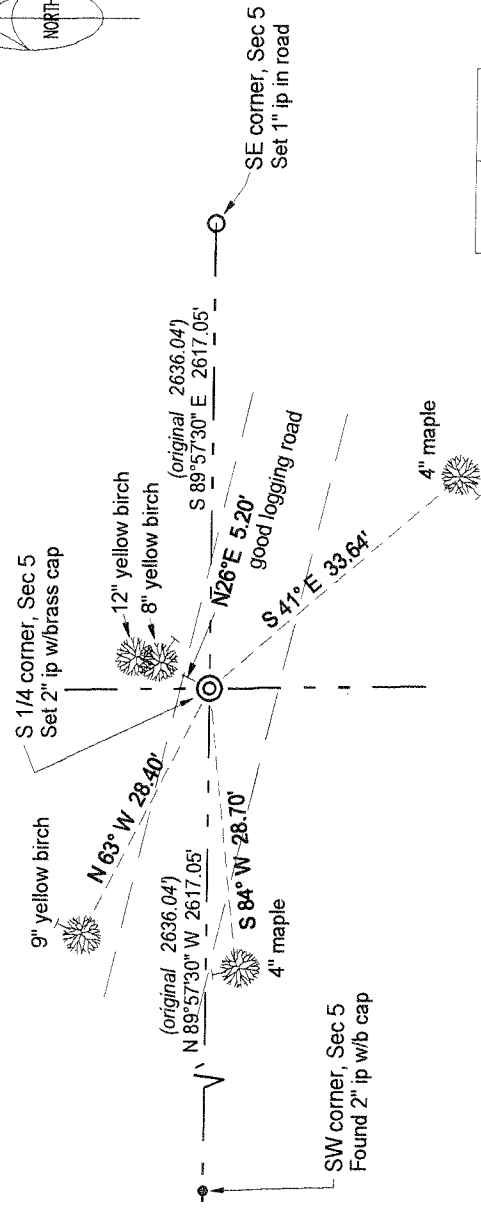
Set a 2" x 30" iron pipe with a brass cap, top of which is 0.5' below ground.
Set a white vinyl sign post 5' north of the corner monument.

Describe the accessories used to perpetuate the corner. Include a plan view drawing and accessories found/set. Describe measuring point on bearing trees. Show any topographic features that would aid in future recovery of the corner.

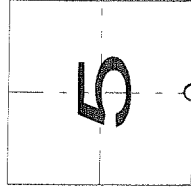
LEGEND

- 2" iron pipe set
- ⊙ 1" iron pipe set
- existing monument as described
- ↘ Measurement to alum. nail in blazed bearing tree.
- BT bearings magnetic with hand compass.
- BT's have turtle blaze & sign facing corner
- Section line bearings referenced to the Langlade County Coordinate System (LCCS) grid.

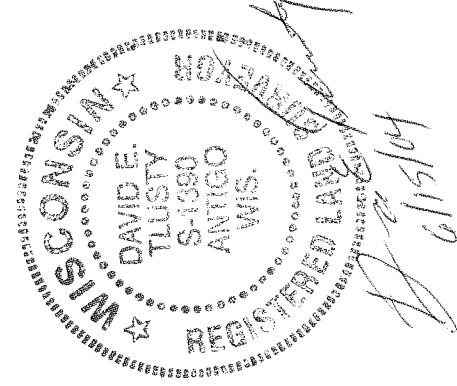
FB14-38



Index No. E7 32-13



○ = corner perpetuated
The South Quarter corner of Section 5, T. 32 N., R. 13 E., Langlade County, WI



I, David E. Trusty, Registered Land Surveyor, as Langlade County Surveyor, certify that the corner location on this record was determined by me and that this U.S. Public Land Survey Monument Record is correct to the best of my knowledge and belief.

Handwritten signature and date:
D. Trusty
6/15/04