

LANGLADE COUNTY U.S. PUBLIC LAND CORNER RESTORATION

The Southeast corner of Section 5, T. 32 N., R. 13 E., Langlade County, WI.

Corner was: (check all that apply)

- Restored through acceptance of an obliterated evidence location.
- Restored through acceptance of a found perpetuated location.
- Determined to be lost and re-established through proportionate methods.
- Show bearings and distances to PLSS corners used for proportioning, and show original distances).
- Restored/recovered/re-established in a location that differs from a previously established position.
- Check here if additional information is shown on the reverse side of this form.

43213050000

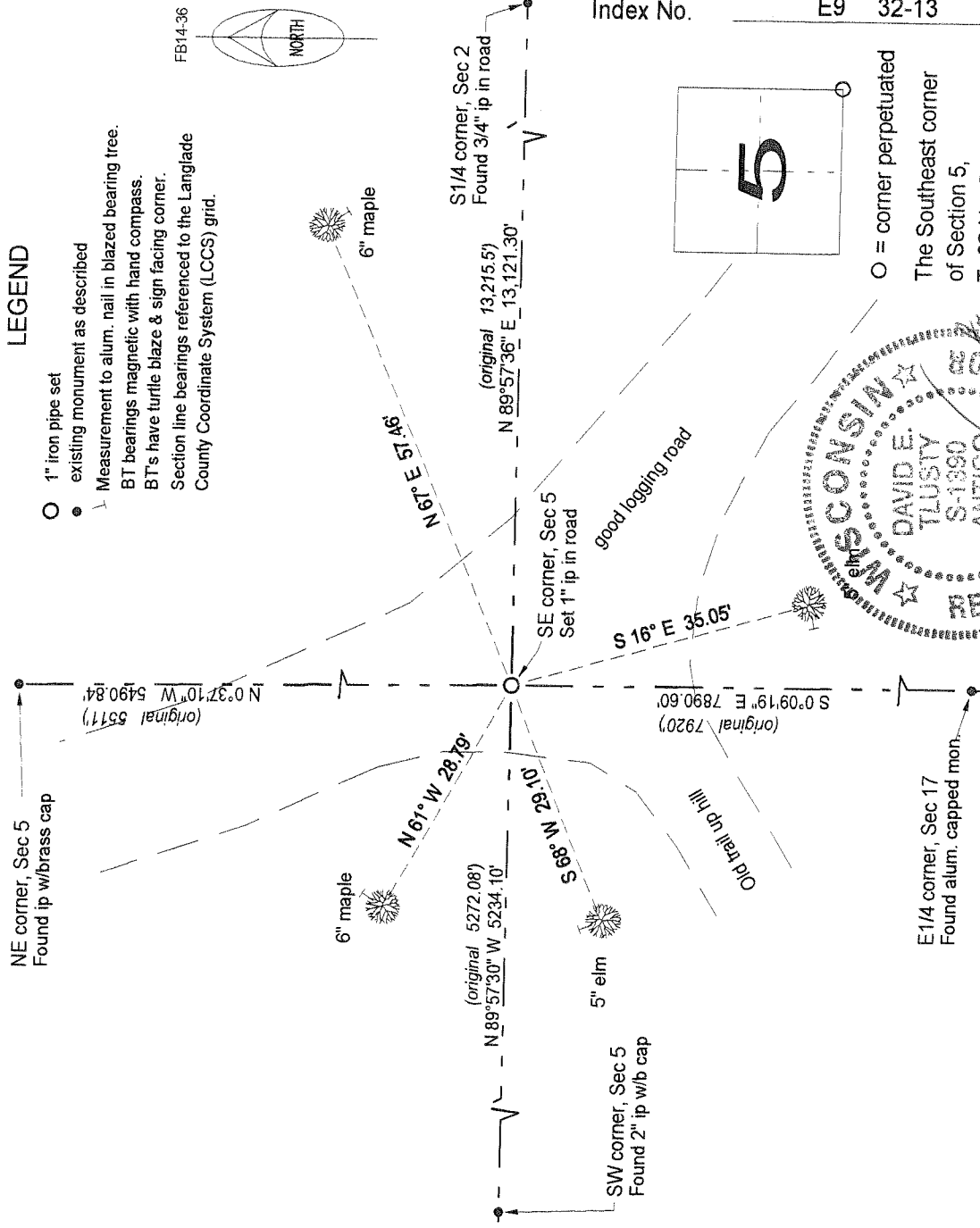
Describe record evidence, recovered physical evidence, occupational evidence, testimonial evidence and all other evidence considered in the recovery/restoration of the corner.

The original corner was established in 1857 by Alfred Millard. Original bearing trees: hemlock, 12", N25°W, 25 links and an elm, 12", S45°E, 67 links. There is no evidence in the records to indicate that this corner was ever used or maintained after the original government survey. I re-established this corner by double proportionate measurement between the Southwest corner of Section 5 and the South Quarter corner of Section 2, and between the Northeast corner of Section 5 and the East Quarter corner of Section 17.

Physical description of the monument set:

Set a 1" x 30" iron pipe with a 2" aluminum cap, top of which is 0.4' below ground.

Describe the accessories used to perpetuate the corner. Include a plan view drawing and accessories found/set. Describe measuring point on bearing trees. Show any topographic features that would aid in future recovery of the corner.



Index No. E9 32-13

I, David E. Tlusty, Registered Land Surveyor, as Langlade County Surveyor, certify that the corner location on this record was determined by me and that this U.S. Public Land Survey Monument Record is correct to the best of my knowledge and belief.