

4321303 2000 2013

# U.S. PUBLIC LAND SURVEY MONUMENT RECORD

(Prepared and as required by S. A-E 7.08 WI Administrative Code)

The WEST 1/4 corner of Section 2, T. 32 N., R. 13 E., Langlade County, WI  
Corner was (check all that apply)

- Restored through acceptance of an obliterated evidence location.
- Restored through acceptance of a found perpetuated location.
- Determined to be lost and re-established through proportionate methods. (show bearings and distances to PLSS corners used for proportioning.)
- Restored/recovered/re-established in a location that differs from a previously established position. (Show difference in plan view below.)
- Check here if additional information is shown on the reverse side of this form.

**Describe record evidence, recovered physical evidence, occupational evidence, testimonial evidence, and all other evidence considered in the recovery/restoration of the corner.**

Sept. 1857 - A. Millard set original 1/4 section post; Hemlock 15", N45°W, 11 links; Hemlock 15", S30°E, 38 links.

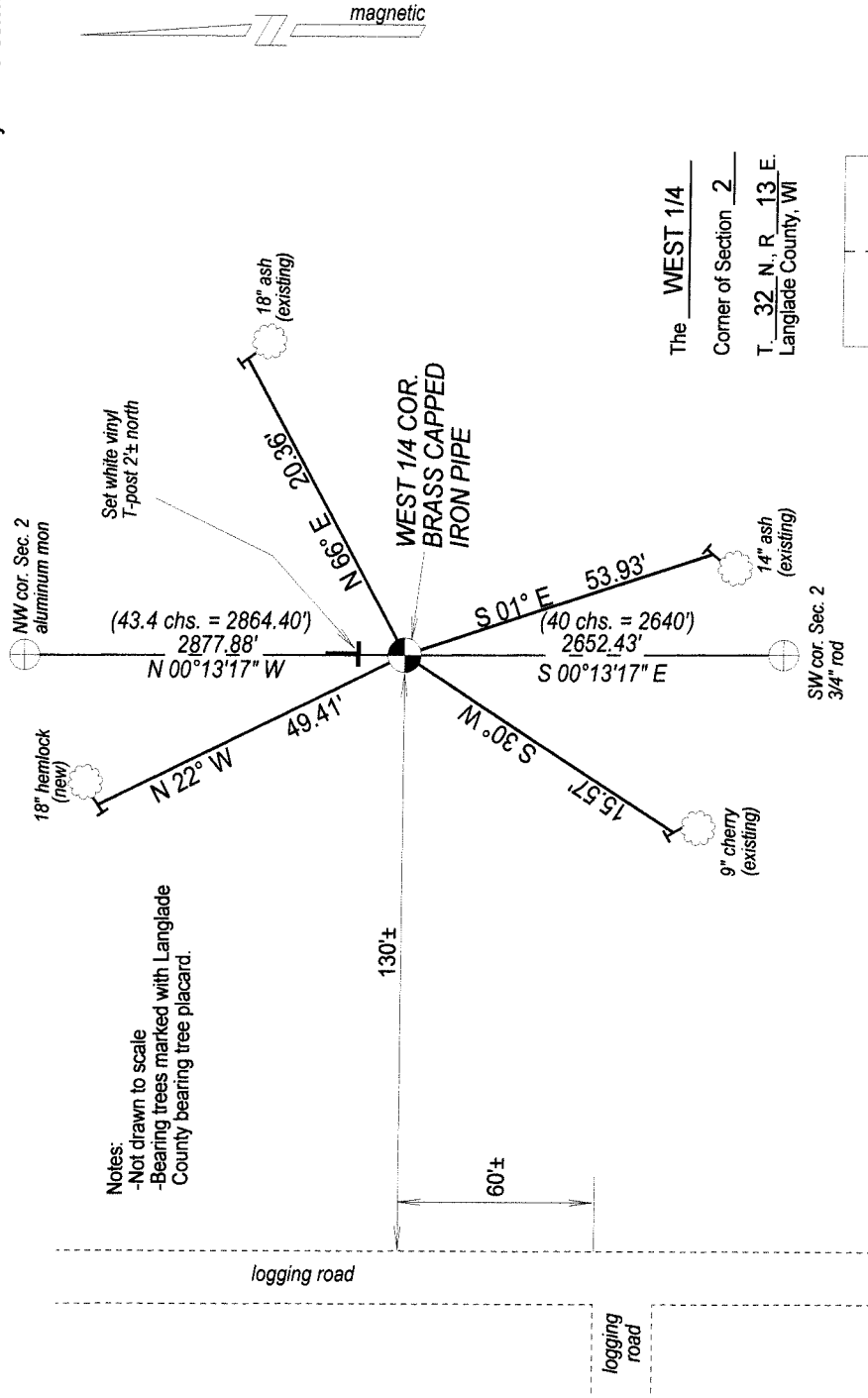
1976 - Owens-Illinois Map #10410 of Langlade County Records indicates a "old 1.5" squared cedar stake" was found.

2013 - I found an existing unstamped brass capped monument with existing bearing trees near corner location. Further research of the corner indicated the brass capped monument was set by preliminary work done by MSA in 2006. I removed, stamped, and reset the brass capped monument on a straight line and at the proportional distance between the Northwest corner and Southwest corner of Section 2.

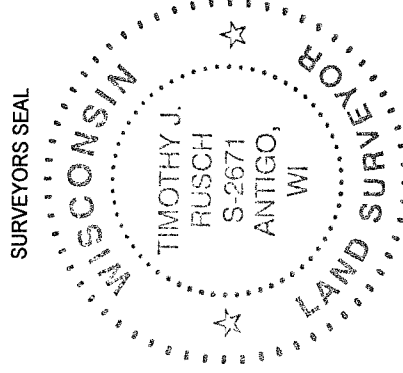
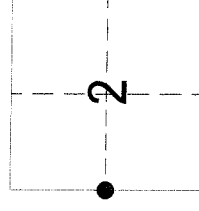
### Physical description of the monument set:

I stamped and reset a 2.375" x 30" iron pipe with brass cap as the corner, and tied it out as follows.

Describe the accessories used to perpetuate the location of the corner. Include a plan view drawing and indicate accessories found/set. Describe measuring point on bearing trees. Show any topographic features that would aid in future recovery of the corner.



The WEST 1/4 Corner of Section 2, T. 32 N., R. 13 E., Langlade County, WI



I, Timothy J. Rusch certify that the corner location shown on this record was determined by me or under my direction and control and that this U.S. Public Land Survey Monument Record is correct and complete to the best of my knowledge and belief.

Timothy J. Rusch 12/05/2013  
Signature Date