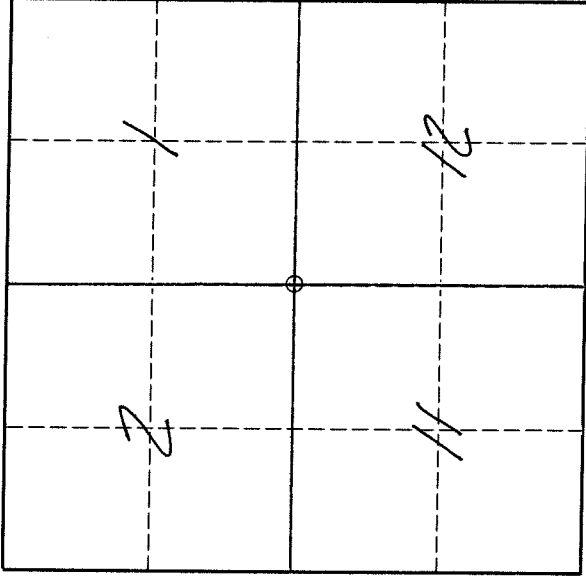


U. S. PUBLIC LAND SURVEY MONUMENT RECORD

INSTRUCTIONS:

This record shall show the location of the corner and shall include all of the following nine elements (a through i).

- (a) Identify the corner by reference to the U.S. public land survey system.
 O = Corner monument restored.

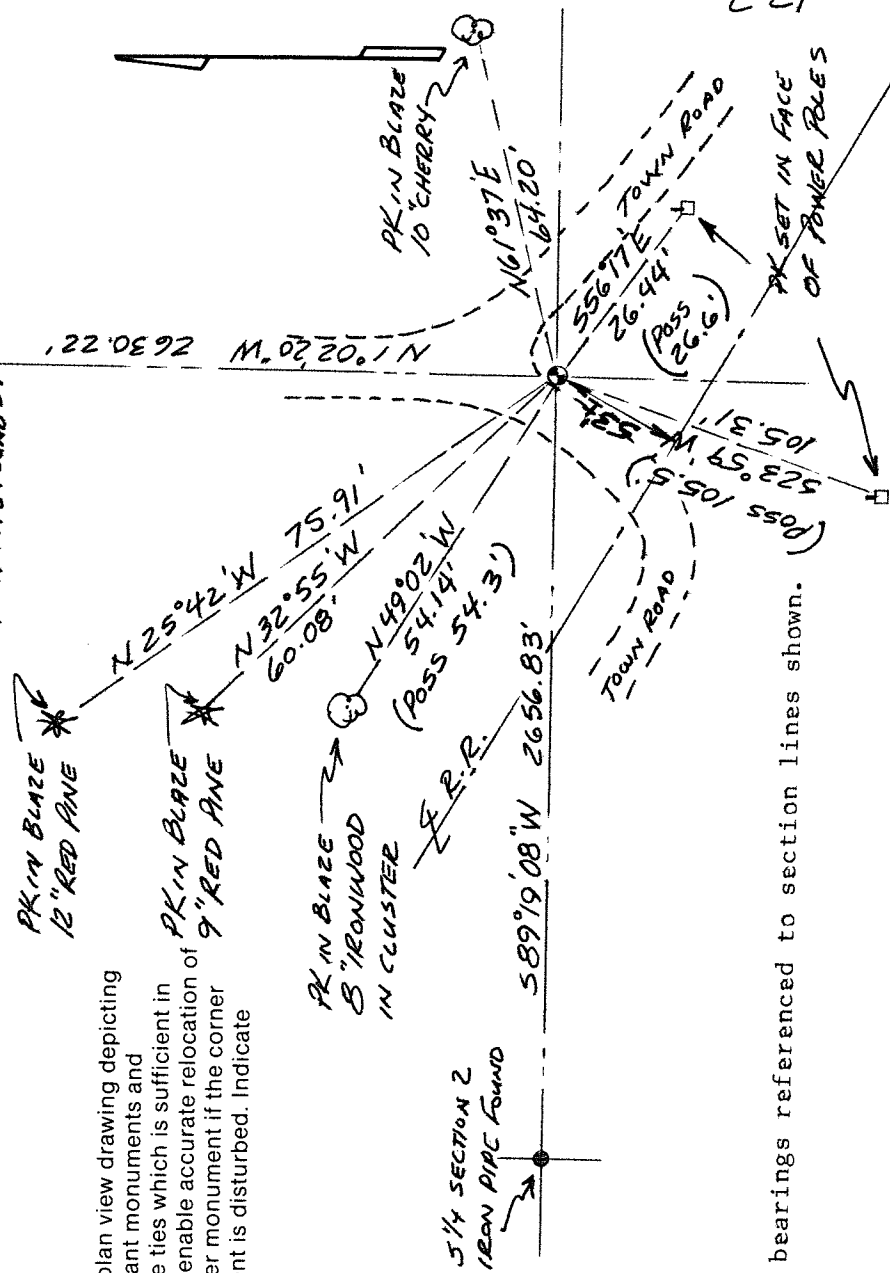


The Southwest corner of Section 1, Township 32 North, Range 13 East, Langalde County, Wisconsin.

T. 32 N., R. 13 E.

- (b) Describe any record evidence, monument evidence, occupational evidence, testimonial evidence or any other material evidence you considered, and whether the monument was found or placed.
 The original corner was established in 1857 by Alfred Millard. Original bearing trees: Sugar, 12", N35E, 13 lks and a Sugar, 12", S51W, 23 lks. In May, 1916, Malcolm Hutchinson found no evidence of the corner and re-established it. He set a sleigh shoe and marked two Bearing Trees. In July, 1971, Robert Poss found a 1" iron pipe and an old BT with scribes and blazes. He replaced the 1" with a 2" iron pipe with brass cap. In December, 1992, I found a 2" iron pipe lying on the ground; a bent 2" aluminum monument with cap, and a bent 1" iron pipe, in the ground. The 1" pipe and the aluminum monument were about 0.8' apart. I re-set the corner from three recovered ties as shown below. For the corner, I set a 1 1/4" x 36" black iron pipe with 4" brass cap flush with the ground. The corner falls about midway between the 1" pipe and the aluminum monument, both of which I removed.

- (c) In the plan view drawing below, provide reference ties to at least 4 witness monuments, or, if the location is within a municipality, to at least 2 witness monuments. (Witness monuments shall be made of concrete, natural stone, iron or other equally durable material.)
 Describe witness monuments.



- (d) Show a plan view drawing depicting the relevant monuments and reference ties which is sufficient in detail to enable accurate relocation of the corner monument if the corner monument is disturbed. Indicate north.

Assumed bearings referenced to section lines shown.

E21

Describe any material discrepancy between the location of the corner as restored or reestablished and the location of that corner as previously restored or reestablished by distance and direction. Show the discrepancy on the plan view drawing under (d), above. Show the distances between the corner as previously restored or reestablished and (1) the corner as restored or reestablished, and (2) to at least 2 of the witness monuments shown on the drawing in (d), above.

No discrepancy, re-set corner from Poss ties.

- (f) Was the corner restored through acceptance of (1) an obliterated evidence location, or, (2) a found perpetuated location?
A found perpetuated location - Poss ties.

- (g & h) Was the corner reestablished through lost corner proportionate methods? If so, show the method, including the directions and distances to other public land survey corners used as evidence or used for proportioning in determining the corner location.
No.

- (i) I, David E. Tlusty, Langlade County Surveyor
(type or print name)

certify that the corner location shown on this record was determined by me or under my direction and control and that this U.S. Public Land Survey Monument Record is correct and complete to the best of my knowledge and belief.

David E. Tlusty 10/7/93
Signature Date

