

U.S. PUBLIC LAND SURVEY MONUMENT RECORD

(Prepared and as required by S. A-E 7.08 WI Administrative Code)

The SOUTH 1/4 corner of Section 33, T. 32 N., R. 12 E., Langlade County, WI

Corner was: (check all that apply)

- Restored through acceptance of an obliterated evidence location.
- Restored through acceptance of a found perpetuated location.
- Determined to be lost and re-established through proportionate methods.

(Show bearings and distances to PLSS corners used for proportionate methods.)

- Restored/recovered/reestablished in a location that differs from a previously established position. (Show difference in plan view below.)

3212330020

- Check here if additional information is shown on the reverse side of this form.

Describe record evidence, recovered physical evidence, occupational evidence, testimonial evidence and all other evidence considered in the recovery/restoration of the corner.

The original corner was established in 1857 by Alfred Millard. Original bearing trees: birch, 14", South, 24 lks. and a sugar, 15", N30°E, 38 lks. 1914, Malcolm Hutchinson: "West between 4 & 33, 40.095 (2646.27') hit 1/4 post stone set by myself". June 30, 1998 D. Tlusty M. Kielcheski, Marty Mytas found PK @ C-L road and fence north. Measured temporary ties. Removed PK and dug with backhoe at centerline of road at obvious property line to north. Found nothing. Accepted location of PK found as best evidence of corner. Distance to corner to East is in agreement with Hutchinsons distance.

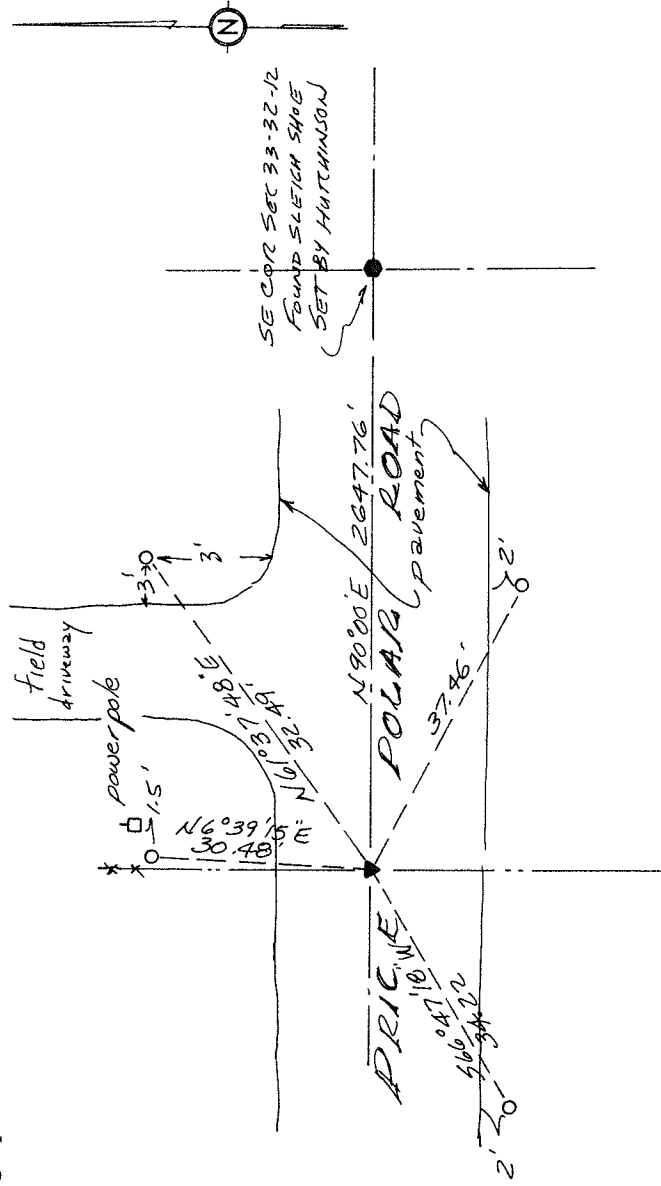
Physical description of the monument set:

For the corner, on July 14, 1998 I set 30d from temporary ties in road patch.

Describe the accessories used to perpetuate the location of the corner. Include a plan view drawing and indicate accessories found/set. Describe measuring point on bearing trees. Show any topographic features that would aid in future recovery of the corner.

- = 3/4" x 30" rebar with red plastic cap set flush with ground
- + = white vinyl sign post set

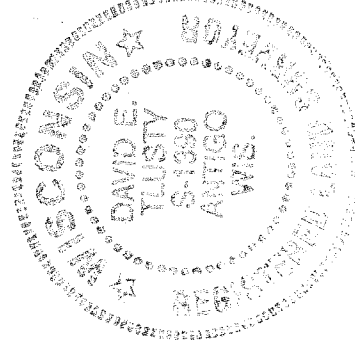
Notes FB14-109



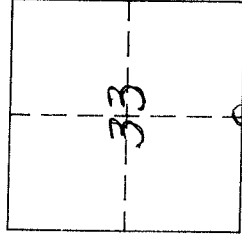
SURVEYORS SEAL

The SOUTH 1/4
corner of Section 33

T. 32 N., R. 12 E.
Langlade County, WI



INDEX No. 211
32-12



○ = Location of corner

I, DAVID E. TLUSTY
LANGLADE COUNTY SURVEYOR, certify that the corner location shown on this record was determined by me or under my direction and control and that this U.S. Public Land Survey Monument Record is correct and complete to the best of my knowledge and belief.

David E. Tlusty 8/6/98
Signature Date