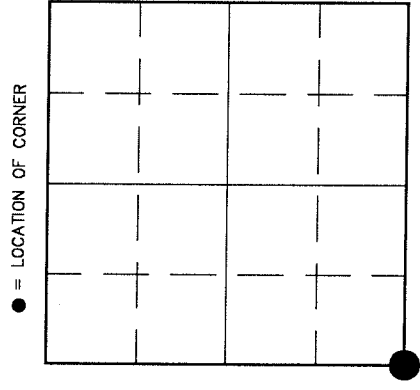


3212310000

U.S. PUBLIC LAND SURVEY MONUMENT RECORD

HISTORY OF ORIGINAL CORNER ESTABLISHMENT AND SUBSEQUENT RESTORATION AND DESCRIPTION OF ANY RECORD, MONUMENT OCCUPATIONAL, TESTIMONIAL OR OTHER EVIDENCE CONSIDERED:

THE ORIGINAL CORNER WAS ESTABLISHED IN 1857 BY ALFRED MILLARD. ORIGINAL BEARING TREES: WHITE PINE 36" N23E 57LKS., SUGAR MAPLE 12" N53W 67LKS., WHITE PINE 30" S8E 83LKS. 04/06/99 DON BUZA AND GERRY BAHAR SEARCHED FOR CORNER. COUNTY SURVEYOR HAD DUG PREVIOUSLY AND FOUND NOTHING. WE SET 1 3/16" BAR AT CENTERLINE P.I. OF HILL RD. AND FENCELINE TO EAST.



● = LOCATION OF CORNER

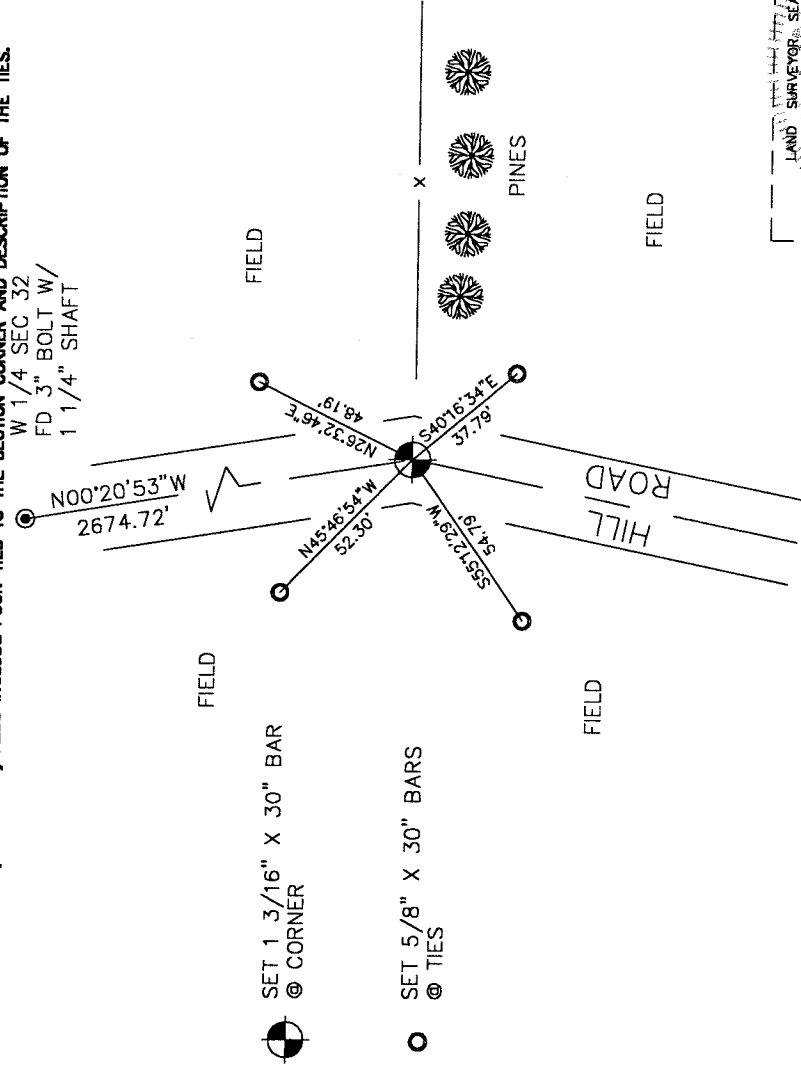
SECTION 32
 TOWNSHIP 32 NORTH, RANGE 12 EAST
 TOWN OF PRICE
 LANGLADE COUNTY, WISCONSIN

CORNER WAS: (CHECK ALL THAT APPLY)

- RESTORED THROUGH ACCEPTANCE OF AN OBLITERATED EVIDENCE LOCATION
- RESTORED THROUGH ACCEPTANCE OF A FOUND PERPETUATED LOCATION
- CONSIDERED A LOST CORNER AND REESTABLISHED THROUGH LOST CORNER PROPORTIONATE METHODS (INCLUDE A PLAN VIEW DRAWING SHOWING DISTANCES AND DIRECTIONS TO OTHER PUBLIC LAND SURVEY CORNERS USED FOR PROPORTIONING AND DETERMINING THE CORNER LOCATION)
- RESTORED OR REESTABLISHED IN A LOCATION THAT DIFFERS FROM A PREVIOUS RESTORATION OR REESTABLISHMENT (INCLUDE A PLAN VIEW DRAWING AND INDICATE WHAT WAS SET AND/OR FOUND)
- CHECK IF THERE IS ADDITIONAL INFORMATION ON BACK

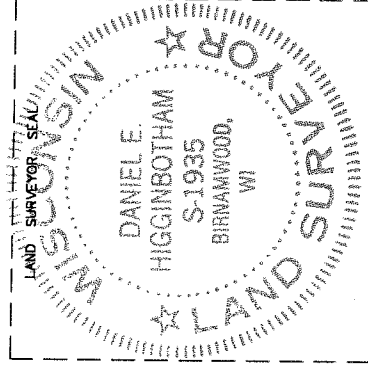
DESCRIBE THE MONUMENT AND ACCESSORIES USED TO PERPETUATE THE LOCATION OF THE CORNER. (INCLUDE A PLAN VIEW DRAWING AND INDICATE WHAT WAS SET AND/OR FOUND) ALSO INCLUDE FOUR TIES TO THE SECTION CORNER AND DESCRIPTION OF THE TIES.

W 1/4 SEC 32
 FD 3" BOLT W/
 1 1/4" SHAFT



SET 1 3/16" X 30" BAR
 @ CORNER

SET 5/8" X 30" BARS
 @ TIES



DANIEL E. HIGGINBOTHAM

(TYPE OR PRINT NAME) CERTIFY THAT THE CORNER LOCATION SHOWN ON THIS RECORD WAS DETERMINED BY ME OR UNDER MY DIRECTION AND CONTROL AND THAT THIS U.S. PUBLIC LAND SURVEY MONUMENT RECORD IS CORRECT AND COMPLETE TO THE BEST OF MY KNOWLEDGE AND BELIEF.

Daniel E. Higginbotham
SIGNATURE

2-3-2000
DATE

2-5
32-12

INDEX NO.